



RIVERSIDE
COUNTY
TRANSPORTATION
COMMISSION

Mid County Parkway
**RAMONA
EXPRESSWAY**

**CONSTRUCTION
ALERT**



BRINGING SAFETY IMPROVEMENTS TO RAMONA EXPRESSWAY

Week of June 22, 2026

[para español haga clic aqui](#)

Nighttime Closures of Eastbound Ramona Expressway From Rider Street to Warren Road

The Riverside County Transportation Commission's **Mid County Parkway Ramona Expressway Project** will require nightly full closures of **eastbound** Ramona Expressway, from Rider Street to Warren Road, beginning Sunday, June 28 through Thursday, July 2, and continuing Monday, July 6 through Thursday, July 9, from 10 p.m. to 5 a.m.

These closures will allow crews to safely repair k-rail and perform roadway maintenance. Access to homes and businesses will be maintained.

[Closure Details](#)

Please see closure details below. Construction activity and closures are subject to change due to inclement weather and other factors.



UPCOMING WORK & CLOSURES

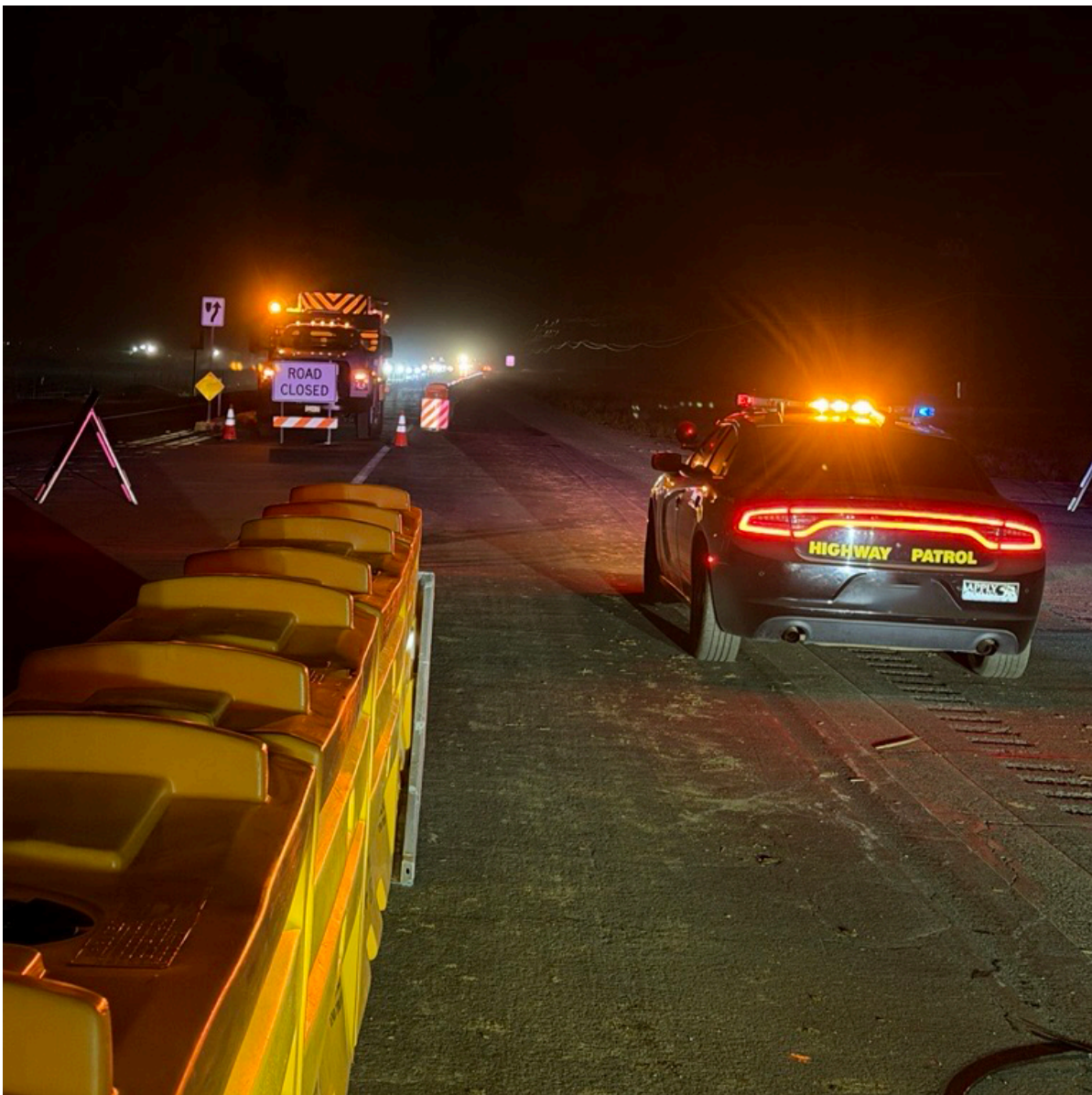
Date/Time	Activity & Location	Detour
Sunday, June 28 – Thursday, July 2	Full eastbound closure of Ramona Expressway from	Southbound on I-215, eastbound on State Route 74,

Nightly, 10 p.m. – 5 a.m.	Rider Street to Warren Road	northbound on N. Sanderson Avenue to Ramona Expressway
Monday, July 6 – Thursday, July 9 Nightly, 10 p.m. – 5 a.m.	Full eastbound closure of Ramona Expressway from Rider Street to Warren Road	Southbound on I-215, eastbound on State Route 74, northbound on N. Sanderson Avenue to Ramona Expressway

WORK ZONE SAFETY REMINDER

SLOW DOWN AND STAY ALERT IN THE WORK ZONE

- **The speed limit is 45 MPH in the work zone.**
Traffic fines are doubled within the construction zone.
- **Follow temporary signage and traffic patterns.**
Travel lanes may feel narrower and shoulder space may be limited.
- **Give construction trucks and equipment extra room.**
Trucks and equipment are entering and exiting active work areas daily.
- **Stay alert for crews near live traffic.**
Avoid distractions, reduce your travel speed, and watch for crews in the area.



PROJECT OVERVIEW

The Riverside County Transportation Commission (RCTC) is making major improvements along an **8.6 mile stretch of Ramona Expressway**, from one mile east of Rider Street to Warren Road. This corridor has experienced a high number of collisions and is identified as a high priority for safety and access improvements. Once complete, the project will create a safer, more reliable roadway for residents, commuters, businesses, and visitors.

Project improvements include:

- One new lane in each direction
- A raised center median
- A new bridge over the San Jacinto River
- Traffic signal upgrades
- A new wildlife crossing
- A new buffered bike lane

Construction will continue through 2028. While this work is underway, we appreciate your patience as crews make these long-term improvements. Drivers should plan for extra travel time, slow down, and stay alert near work areas. Access to homes and businesses will be maintained as much as possible throughout construction.



STAY CONNECTED



Text **MCP** to
855-793-2625



Project Email
ramonaexpressway@rctc.org



Project Helpline
951-200-4650

rctc.org/mcpramona



Riverside County Transportation Commission | 4080 Lemon Street 3rd Floor | Riverside, CA 92501 US

[Unsubscribe](#) | [Update Profile](#) | [Constant Contact Data Notice](#)