

## MESSAGE FROM THE EXECUTIVE DIRECTOR

**Mission Statement:** Improve mobility for the people of Riverside County

Dear Commissioners:

Thank you for reviewing the Fiscal Year (FY) 2025/26 budget for the Riverside County Transportation Commission (Commission or RCTC). This *Budget in Brief* was prepared for Commissioners to supplement the budget document and is intended to summarize RCTC's financial roadmap for delivering transportation projects and programs in FY 2025/26. The budget reflects RCTC's commitment to improving mobility for the people of Riverside County. Staff acknowledges and appreciates the guidance, inspiration, and leadership of the Commissioners in advancing the future of transportation in Riverside County.

## BUDGET SUMMARY

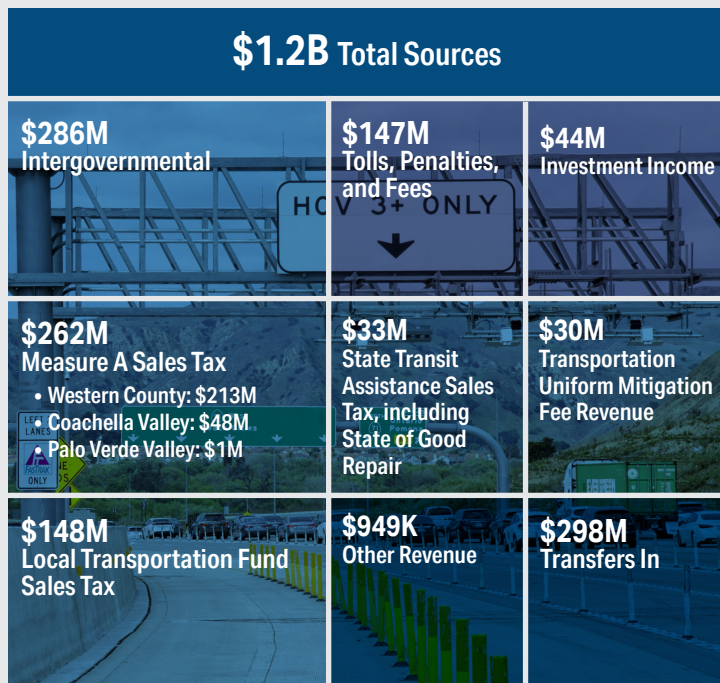
The following FY 2025/26 budget summary outlines the Commission's budgeted sources and uses along with projected fund balance estimated to be \$1.6 billion at June 30, 2026.

	FY 2025/26
<b>Beginning Fund Balance (7/1/2025)</b>	<b>\$ 1,805,547,000</b>
Total Estimated Sources	1,251,746,100
Total Estimated Uses	(1,407,630,400)
Uses Over Sources (offset by beginning fund balance)	(155,884,300)
<b>Ending Fund Balance (6/30/2026)</b>	<b>\$ 1,649,662,700</b>



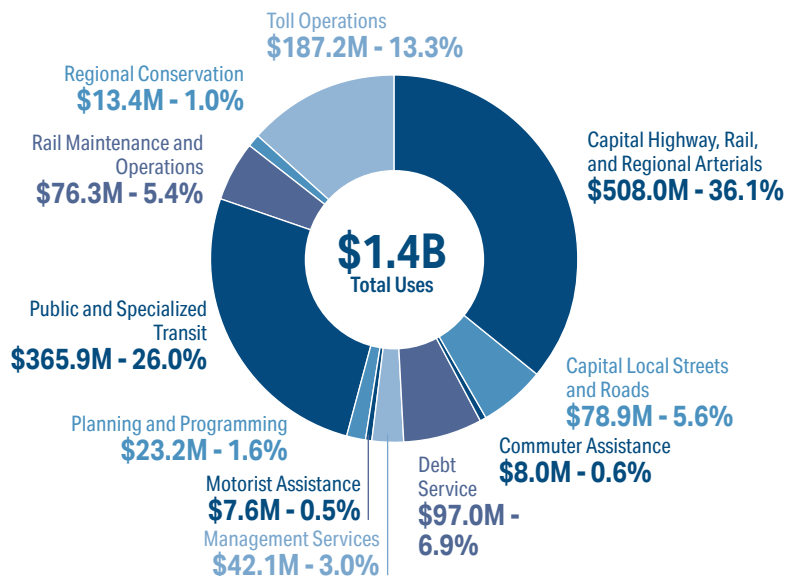
## SOURCES

The Commission receives funding from several different sources. The FY 2025/26 budgeted sources totaling approximately \$1.2 billion are outlined below.



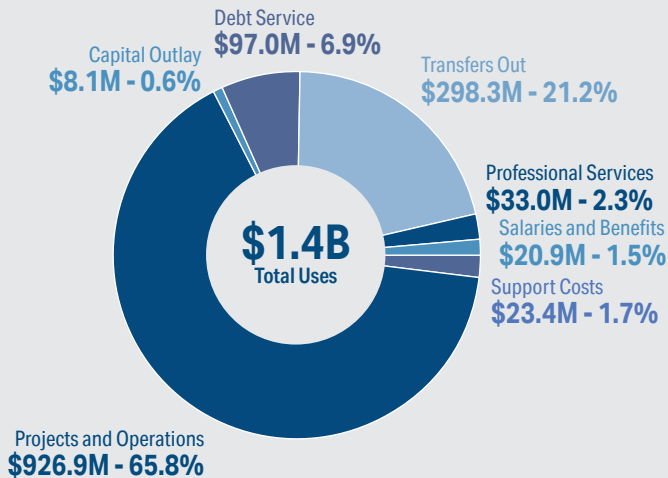
## USES BY DEPARTMENT

The Commission's FY 2025/26 budgeted uses by department totaling approximately \$1.4 billion are outlined below.



## USES BY FUNCTION

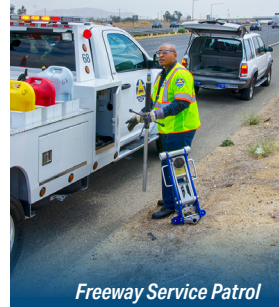
The Commission's FY 2025/26 budgeted uses by function totaling approximately \$1.4 billion are outlined below.



## USES BY DEPARTMENT

### Highlights

- **Management Services**
  - Includes Traffic Relief Plan and related outreach
- **Regional Programs**
  - **Rail**
    - Includes Service Development Plan for Coachella Valley Rail
  - **Public and Specialized Transit**
    - Includes Short Range Transit Plans for public transit operators, including Riverside Transit Agency, SunLine Transit Agency, Palo Verde Valley Transit Agency, and municipal transit operators
  - **Commuter Assistance**
    - Includes new free rail pass and transit trainer programs along with vanpool subsidies
  - **Motorist Assistance**
    - Includes Freeway Service Patrol service
  - **Regional Conservation**
    - Includes reimbursable Management Services Agreement with Western Riverside County Regional Conservation Authority



## CAPITAL PROJECT HIGHLIGHTS

The following are significant capital projects budgeted in FY 2025/26 by phase.

### Engineering

- 91 Eastbound Corridor Operations Project (ECOP)
- SR-79 Realignment
- Coachella Valley Rail Corridor

### Construction

- 71/91 Connector
- Mid County Parkway Projects
- Smart Freeways

### Design-Build

- I-15 Express Lanes – Southern Extension

### Right of Way

- Mid County Parkway Projects
- SR-79 Realignment

### Other

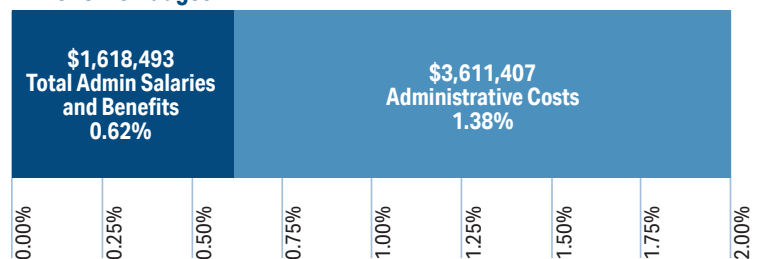
- Coachella Valley Highways and Regional Arterials
- Palo Verde Valley Transit Agency Facilities Improvement Project
- Measure A Local Streets and Roads, including Western County, Coachella Valley, and Palo Verde Valley



## MEASURE A ORDINANCE COMPLIANCE

The FY 2025/26 budget is compliant with the Measure A ordinance limiting the Commission's administrative salaries and benefits to 1% of Measure A revenues along with the Commission's policy limiting total administrative costs to 4% of Measure A revenues.

### FY 2025/26 Budget



Administrative salaries & benefits cap 1%; Total administrative costs cap 4%