



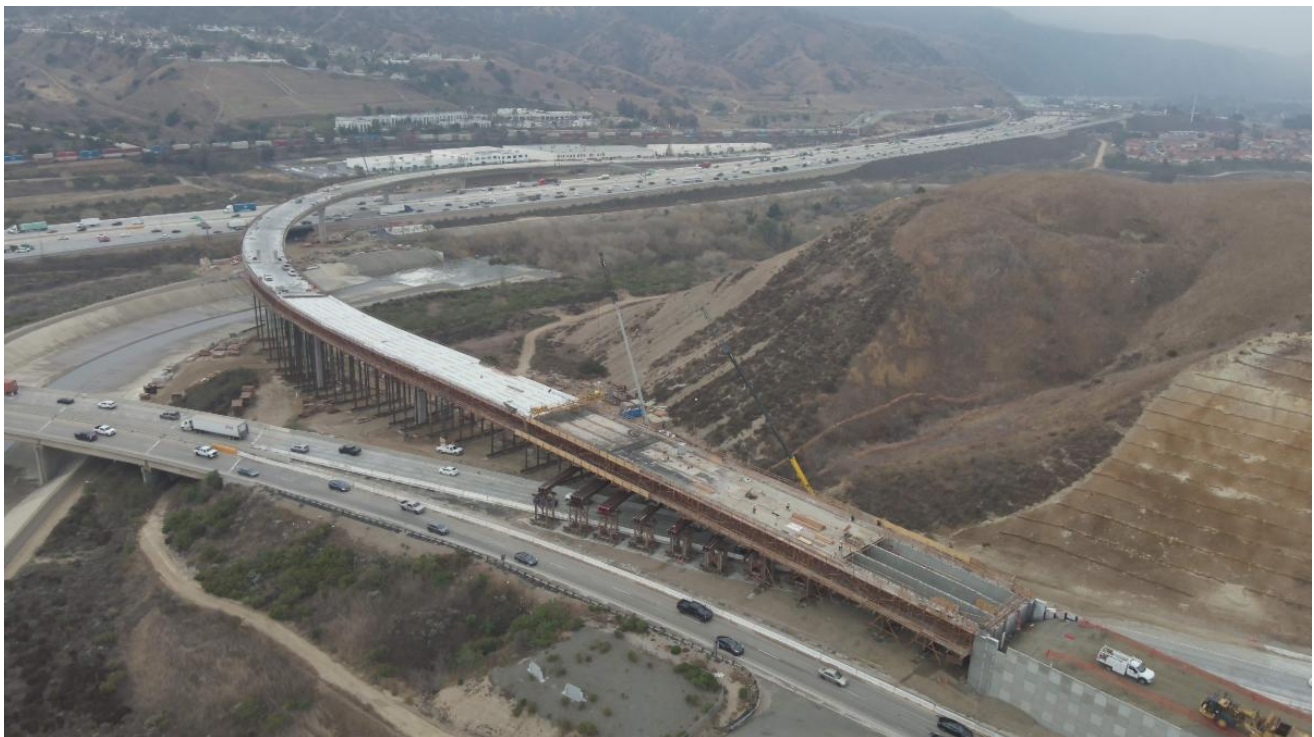
CONSTRUCTION UPDATE

Week of February 17, 2025

Full Nighttime Closures of Southbound 71

Full nighttime closures of southbound 71 are scheduled to take place **Thursday, February 20, 9 p.m. – 5 a.m.** and **Friday, February 21, from 9 p.m. – 6 a.m.** to allow crews to safely conduct concrete pours on the new connector.

Additionally, nightly alternating lane closures are scheduled for both eastbound and westbound 91 and northbound 71. Express Lanes, connector, and ramp closures will also take place during the week.



Due to the Presidents Day holiday, no closures are scheduled from Friday, February 14 through Monday, February 17.

Please see closure details below. Construction activity and closure schedules are subject to change.

Highway and Express Lanes Closures

Date/Time	Activity and Location	Detour
Thursday, February 20 9 p.m. – 5 a.m. <hr/> Friday, February 21 9 p.m. – 6 a.m.	Full southbound 71 closure at Butterfield Ranch Rd./ Euclid Ave. in Chino and Chino Hills to the 91	Regional Detour
Tuesday, February 18 – Wednesday, February 19 Nightly, 9 p.m. – 5 a.m.	Southbound 71 single lane closure from Butterfield Ranch Rd./ Euclid Ave. to the 91	No detour required, since other lanes will remain open

<p>Tuesday, February 18 – Thursday, February 20 Nightly, 10 p.m. – 6 a.m.</p> <hr/> <p>Friday, February 21 11 p.m. – 7 a.m.</p>	<p>Eastbound 91 alternating lane closures from the County Line to I-15</p>	<p>No detour required, since other lanes will remain open</p>
<p>Tuesday, February 18 – Thursday, February 20 Nightly, 8 p.m. – 4 a.m.</p> <hr/> <p>Friday, February 21 8 p.m. – 6 a.m.</p>	<p>Westbound 91 alternating lane closures from I-15 to the County Line</p>	<p>No detour required, since other lanes will remain open</p>
<p>Tuesday, February 18 – Thursday, February 20 Nightly, 10 p.m. – 6 a.m.</p> <hr/> <p>Friday, February 21 11 p.m. – 7 a.m.</p>	<p>Eastbound 91 Express Lanes closed from the County Line to I-15</p>	<p>No detour required, since other lanes will remain open</p>
<p>Tuesday, February 18 – Thursday, February 20 Nightly, 8 p.m. – 4 a.m.</p> <hr/> <p>Friday, February 21 10 p.m. – 7 a.m.</p>	<p>Westbound 91 Express Lanes closed from I-15 to the County Line</p>	<p>No detour required, since other lanes will remain open</p>

Ramp and Connector Closures

Date/Time	Activity and Location	Detour
<p>Thursday, February 20 9 p.m. – 5 a.m.</p> <hr/> <p>Friday, February 21 9 p.m. – 6 a.m.</p>	<p>Southbound 71 to eastbound/ westbound 91 connectors closed</p>	<p>Regional Detour</p>
<p>Tuesday, February 18 – Wednesday, February 19 Nightly, 9 p.m. – 5 a.m.</p>	<p>Southbound 71 to westbound 91 connector closed</p>	<p>Use eastbound 91 to Serfas Club Dr./ Auto Center Dr. off-ramp to westbound 91</p>
<p>Tuesday, February 18 – Thursday, February 20 Nightly, 10 p.m. – 6 a.m.</p> <hr/> <p>Friday, February 21 Midnight – 7 a.m.</p>	<p>Eastbound 91 to northbound 71 connector closed</p>	<p>Use eastbound 91 to Serfas Club Dr./ Auto Center Dr. off-ramp to westbound on-ramp to northbound 71</p>
<p>Tuesday, February 18 – Thursday, February 20 Nightly, 10 p.m. – 6 a.m.</p> <hr/> <p>Friday, February 21 Midnight – 7 a.m.</p>	<p>Eastbound 91 Green River Rd. on-ramp closed</p>	<p>Use Green River Rd. to eastbound Palisades Dr. to northbound Serfas Club Dr./ Auto Center Dr.</p>
<p>Tuesday, February 18 –</p>	<p>Northbound I-15 to</p>	<p>No detours required,</p>

Thursday, February 20 Nightly, 8 p.m. – 4 a.m.	westbound 91 Express Lanes connector closed	since other lanes remain open
Friday, February 21 10 p.m. – 7 a.m.		
Tuesday, February 18 – Thursday, February 20 Nightly, 8 p.m. – 4 a.m.	Southbound I-15 to westbound 91 Express Lanes connector closed	No detours required, since other lanes remain open
Friday, February 21 10 p.m. – 7 a.m.		

Neighboring Projects

McKinley Street Grade Separation Project

Work is under way on the city of Corona project. For information and construction details, please visit the project [webpage](#) and register for text updates by texting MCKINLEY at 844-518-1409.

Project Background

The new non-tolled interchange is designed to improve safety, expand access to other modes of travel, reduce greenhouse gas emissions, enhance traffic flow, and support continued movement of native wildlife through the area. Construction is anticipated to be completed in 2025.



Stay Connected



(800) 519-6961



rctc.org/71-91interchange



7191Interchange@rctc.org



@7191Interchange



Text 7191INTERCHANGE to (855) 793-2625