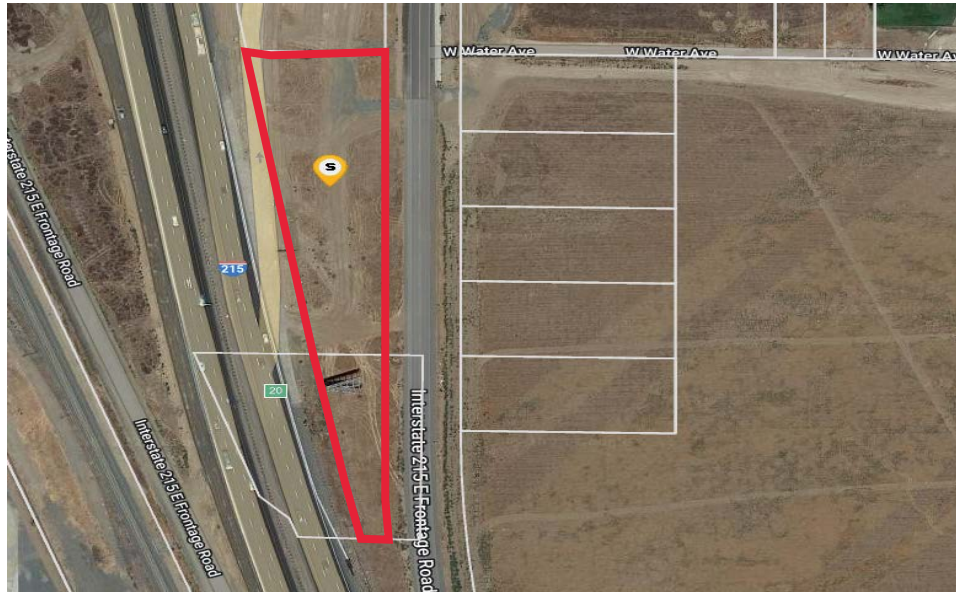




LAND FOR LEASE

E FRONTAGE RD AND W WATER AVE, PERRIS, CA
APN(S) 305-090-040 & 305-090-045



PROPERTY HIGHLIGHTS

Parcel was acquired by Riverside County Transportation Commission (RCTC) for the Mid County Parkway Project.

Lot size: 98,445 sf / 2.26 ac

90-Day Temporary Use lease available

Ideal for a Christmas Tree Farm

Up to 98,445 sf / 2.26 ac for lease

(305-090-040, 045) - Zoning: Commerical

FOR MORE INFORMATION, PLEASE VISIT <https://www.rctc.org/doing-business/property/> or
Contact Paul Mim Mack, Senior Management Analyst-Right of Way

Phone 951.787.7141

Email row@rctc.org