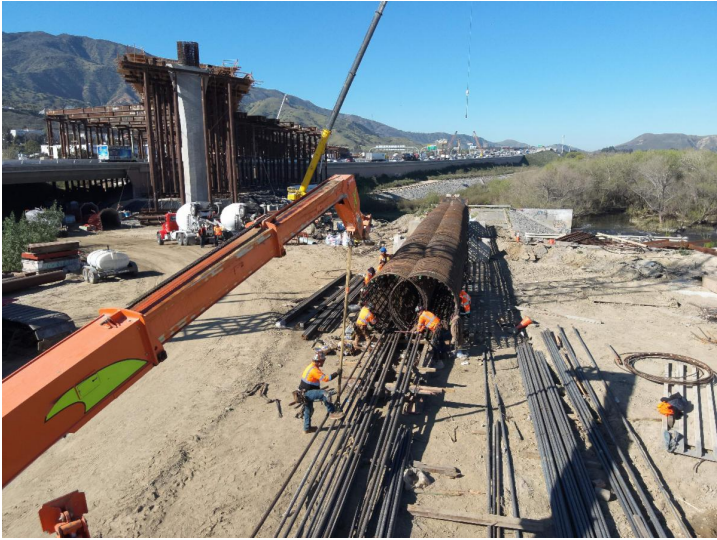




# CONSTRUCTION UPDATE

## Week of April 1, 2024



**Nightly full closures of westbound 91 are scheduled for the week of April 1, 2024.**

Nightly eastbound and westbound 91 Express Lanes closures, alternating lane closures, ramp closures, and connector closures are also scheduled throughout the week.

Closure details are below. Construction activity and closure schedules are subject to change.

**Due to the Cesar Chavez and Easter holidays, no closures are scheduled from Friday, March 29 to Tuesday morning, April 2.**

### Highway and Express Lanes Closures

Date/Time	Activity and Location	Detour
Tuesday, April 2 – Wednesday, April 3 Nightly, 10 p.m. – 6 a.m.	Full closure of westbound 91 from the 71 to Green River Rd.	<a href="#">Regional Detour</a>
Tuesday, April 2 – Wednesday, April 3 Nightly, 8 p.m. – 4 a.m.	Westbound 91 Express Lanes closed from I-15 to the County Line	<a href="#">Regional Detour</a>
Tuesday, April 2 – Thursday, April 4 Nightly, 10 p.m. – 6 a.m. <hr/> Friday, April 5 Midnight – 7 a.m.	Eastbound 91 alternating lane closures from the County Line to I-15	No detour required, since other lanes will remain open
Thursday, April 4 8 p.m. – 4 a.m. <hr/> Friday, April 5 9 p.m. – 6 a.m.	Westbound 91 alternating lane closures from I-15 to the County Line	No detour required, since other lanes will remain open
Tuesday, April 2 – Thursday, April 4 Nightly, 10 p.m. – 6 a.m. <hr/> Friday, April 5 11 p.m. – 7 a.m.	Eastbound 91 Express Lanes closed from the County Line to I-15	No detour required, since other lanes will remain open
Thursday, April 4	Westbound 91 Express	No detour required,

8 p.m. – 4 a.m.	Lanes closed from I-15 to the County Line	since other lanes will remain open
Friday, April 5 10 p.m. – 7 a.m.		

## Ramp and Connector Closures

Date/Time	Activity and Location	Detour
Tuesday, April 2 – Thursday, April 4 Nightly, 10 p.m. – 6 a.m.	Eastbound 91 Green River Rd. on-ramp closed	<a href="#">Use Green River Rd. to eastbound Palisades Dr. to northbound Serfas Club Dr./Auto Center Dr.</a>
Friday, April 5 Midnight – 7 a.m.		
Tuesday, April 2 – Thursday, April 4 Nightly, 9 p.m. – 5 a.m.	Southbound 71 to westbound 91 connector closed	<a href="#">Use eastbound 91 to Serfas Club Dr./ Auto Center Dr. off-ramp to westbound on-ramp to regional detour</a>
Friday, April 5 9 p.m. – 6 a.m.		

## Sky Tour



## Neighboring Projects

### 15/91 Express Lanes Connector Project

The Riverside County Transportation Commission (RCTC) is excited to announce the 15/91 Express Lanes Connector is now open! The new connector provides Express Lanes access from the eastbound 91 to the northbound 15 and the southbound 15 to westbound 91 Express Lanes. [Click here to learn more.](#)

### McKinley Street Grade Separation Project

Work is under way on this City of Corona project. For information and construction details, please visit the project [webpage](#) and register for text updates by texting MCKINLEY at 844-518-1409.

## Project Background

The new non-tolled interchange is designed to improve safety, expand access to other modes of travel, reduce greenhouse gas emissions, enhance traffic flow, and support continued movement of native wildlife through the area. Construction is anticipated to be completed in 2025.



## Stay Connected



(800) 519-6961



[rctc.org/71-91interchange](https://rctc.org/71-91interchange)



[7191Interchange@rctc.org](mailto:7191Interchange@rctc.org)



@7191Interchange



Text 7191INTERCHANGE to 77222

Riverside County Transportation Commission | 4080 Lemon Street, 3rd Floor, Riverside, CA 92501

[Unsubscribe invoices@arellanoassociates.com](mailto:Unsubscribe_invoices@arellanoassociates.com)

[Update Profile](#) | [Constant Contact Data Notice](#)

Sent by [7191interchange@rctc.org](mailto:7191interchange@rctc.org)