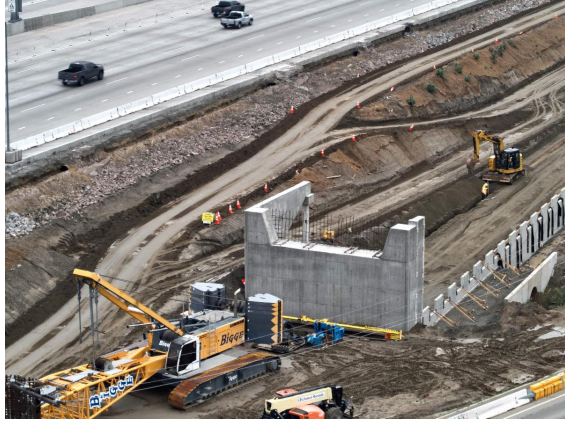




CONSTRUCTION UPDATE

Week of February 5, 2024



Nightly eastbound and westbound 91 Express Lanes closures, alternating lane closures, ramp closures, and connector closures are scheduled the week of February 5, 2024.

Closure details are below. With rain in the upcoming forecast, construction activity and closure schedules are subject to change.

Highway and Express Lanes Closures

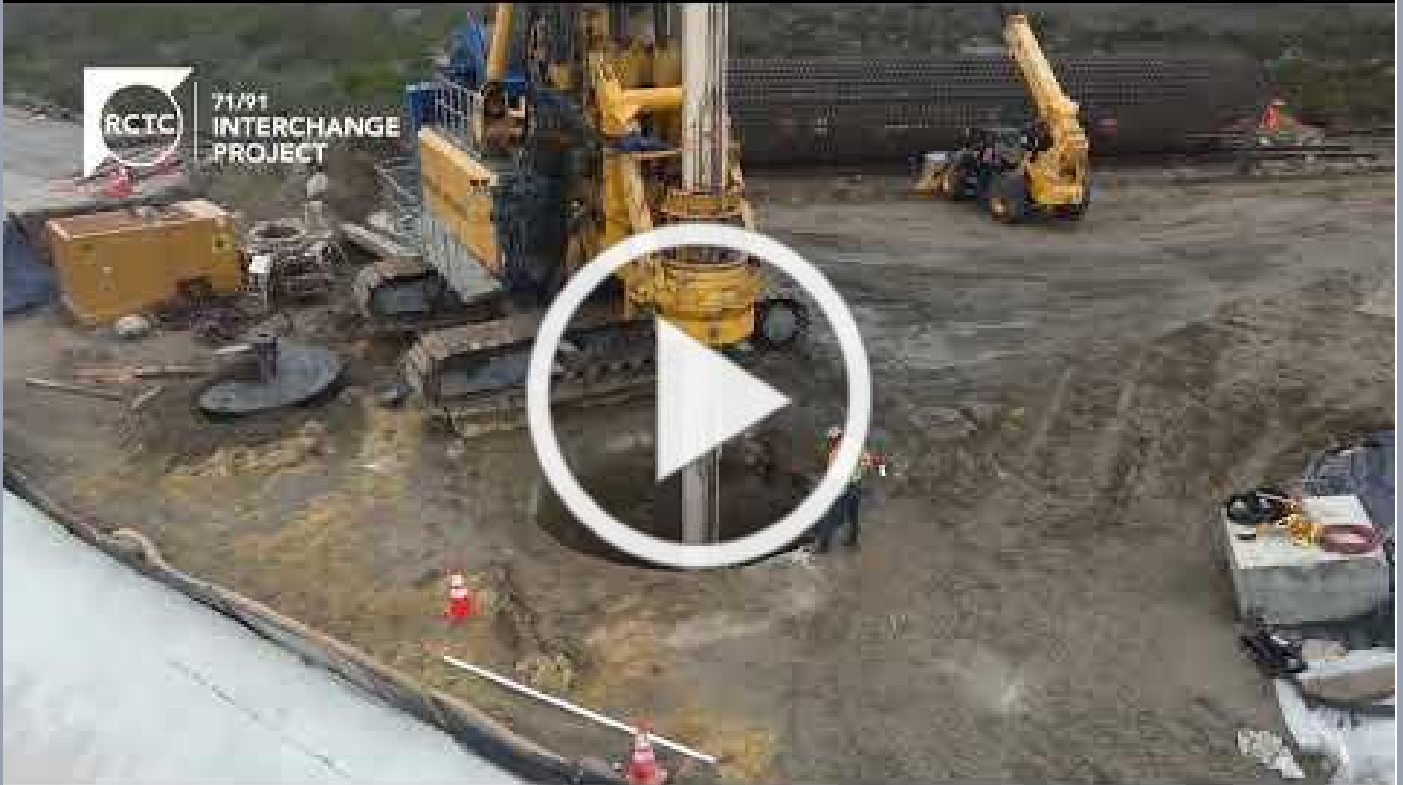
Date/Time	Activity and Location	Detour
Monday, February 5 – Thursday, February 8 Nightly, 10 p.m. – 6 a.m. <hr/> Friday, February 9 – Saturday, February 10 Nightly, 11 p.m. – 7 a.m.	Eastbound 91 Express Lanes closed from the County Line to I-15	No detour required, since other lanes will remain open
Monday, February 5 – Thursday, February 8 Nightly, 8 p.m. – 4 a.m. <hr/> Friday, February 9 – Saturday, February 10 Nightly, 10 p.m. – 7 a.m.	Westbound 91 Express Lanes closed from I-15 to the County Line	No detour required, since other lanes will remain open
Monday, February 5 – Thursday, February 8 10 p.m. – 6 a.m. <hr/> Friday, February 9 Midnight – 7 a.m.	Eastbound 91 alternating lane closures from the County Line to I-15	No detour required, since other lanes will remain open
Monday, February 5 – Thursday, February 8 Nightly, 8 p.m. – 4 a.m. <hr/> Friday, February 9 9 p.m. – 6 a.m.	Westbound 91 alternating lane closures from I-15 to the County Line	No detour required, since other lanes will remain open

Ramp and Connector Closures

Date/Time	Activity and Location	Detour
Monday, February 5 – Thursday, February 8	Eastbound 91 Green River	Use Green River Rd. to

Nightly, 10 p.m. – 6 a.m. <hr/> Friday, February 9 Midnight – 7 a.m.	Rd. on-ramp closed	eastbound Palisades Dr. to northbound Serfas Club Dr./Auto Center Dr.
Monday, February 5 – Thursday, February 8 Nightly, 9 p.m. – 5 a.m. <hr/> Friday, February 9 9 p.m. – 6 a.m.	Southbound 71 to westbound 91 connector closed	Use eastbound 91 to Serfas Club Dr./ Auto Center Dr. off-ramp to westbound on-ramp to regional detour

Sky Tour



RCTC Traffic Relief Plan

The Riverside County Transportation Commission (RCTC) developed the Traffic Relief Plan – a transportation improvement and funding strategy for Riverside County residents. The Plan was developed over a years-long public and community engagement effort amongst Riverside County residents, its community leaders, and local stakeholder groups to identify transportation improvements and to look at future transportation and mobility needs to help the County’s growing population and economy. [Submit your feedback today!](#)



Improved Transportation = Less Traffic Congestion

We need your input at TrafficReliefPlan.org.



Neighboring Projects

15/91 Express Lanes Connector Project

The Riverside County Transportation Commission (RCTC) is excited to announce the 15/91 Express Lanes Connector is now open! The new connector provides Express Lanes access from the eastbound 91 to the northbound 15 and the southbound 15 to westbound 91 Express Lanes. [Click here to learn more.](#)

McKinley Street Grade Separation Project

Ramp and street closures are scheduled for January 22-25. For information and construction details, please visit the project [webpage](#) and register for text updates by texting MCKINLEY at 844-518-1409.

Project Background

The new non-tolled interchange is designed to improve safety, expand access to other modes of travel, reduce greenhouse gas emissions, enhance traffic flow, and support continued movement of native wildlife through the area. Construction is anticipated to be completed in 2025.



Stay Connected



(800) 519-6961



rctc.org/71-91interchange



7191Interchange@rctc.org



@7191Interchange



Text 7191INTERCHANGE to 77222

Riverside County Transportation Commission | 4080 Lemon Street, 3rd Floor, Riverside, CA 92501

[Unsubscribe \[invoicing@arellanoassociates.com\]\(mailto:invoicing@arellanoassociates.com\)](mailto:invoicing@arellanoassociates.com)

[Update Profile](#) | [Constant Contact Data Notice](#)

Sent by byarodriguez@arellanoassociates.com