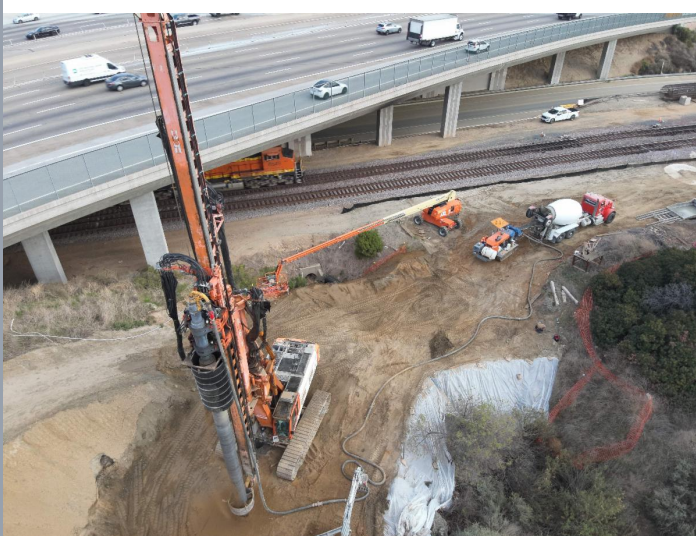




CONSTRUCTION UPDATE

Week of January 22, 2024



Nightly full closures of westbound 91 are scheduled for the week of January 22, 2024.

Nightly eastbound and westbound 91 Express Lanes closures, alternating lane closures, ramp closures, and connector closures are also scheduled throughout the week.

Closure details are below. Construction activity and closure schedules are subject to change.

Full Westbound 91 Closures

The 71/91 Interchange Project will continue nightly full closures (Monday through Wednesday) of the westbound 91 through Wednesday, January 24, 2024.

[Westbound 91 Closure Details](#)

[Westbound 91 Closure Flyer](#)

Highway and Express Lanes Closures

Date/Time	Activity and Location	Detour
Monday, January 22– Wednesday, January 24 Nightly, 10 p.m. – 4 a.m.	Full closure of westbound 91 from the 71 to Green River Rd.	<u>Regional Detour Route</u>
Monday, January 22– Wednesday, January 24 Nightly, 8 p.m. – 4 a.m.	Westbound 91 Express Lanes closed from I-15 to the County Line	<u>Regional Detour Route</u>
Monday, January 22– Thursday, January 25 Nightly, 10 p.m. – 6 a.m.	Eastbound 91 Express	No detour required,

Friday, January 26– Saturday, January 27 Nightly, 11 p.m. 7 a.m.	Lanes closed from the County Line to I-15	since other lanes will remain open
Thursday, January 25 8 p.m. – 4 a.m. <hr/> Friday, January 26– Saturday, January 27 Nightly, 10 p.m. – 7 a.m.	Westbound 91 Express Lanes closed from I-15 to the County Line	No detour required, since other lanes will remain open
Monday, January 22– Thursday, January 25 Nightly, 10 p.m. – 6 a.m. <hr/> Friday, January 26 Midnight – 7 a.m.	Eastbound 91 alternating lane closures from the County Line to I-15	No detour required, since other lanes will remain open
Thursday, January 25 8 p.m. – 4 a.m. <hr/> Friday, January 26 9 p.m. – 6 a.m.	Westbound 91 alternating lane closures from I-15 to the County Line	No detour required, since other lanes will remain open

Ramp and Connector Closures

Date/Time	Activity and Location	Detour
Monday, January 22– Thursday, January 25 Nightly, 8 p.m. – 4 a.m. <hr/> Friday, January 26 9 p.m. – 6 a.m.	Westbound 91 Green River Rd. off-ramp closed	Use westbound Serfas Club Dr./ Auto Center Dr. off- ramp to Palisades Dr. to Green River Rd.
Monday, January 22– Thursday, January 25 Nightly, 10 p.m. – 6 a.m. <hr/> Friday, January 26 Midnight – 7 a.m.	Eastbound 91 Green River Rd. on-ramp closed	Use Green River Rd. to eastbound Palisades Dr. to northbound Serfas Club Dr./Auto Center Dr.
Monday, January 22– Thursday, January 25 Nightly, 9 p.m. – 5 a.m. <hr/> Friday, January 26 9 p.m. – 6 a.m.	Southbound 71 to westbound 91 connector closed	Use eastbound 91 to Serfas Club Dr./ Auto Center Dr. off-ramp to westbound on- ramp to regional detour

RCTC Traffic Relief Plan

The Riverside County Transportation Commission (RCTC) developed the Traffic Relief Plan – a transportation improvement and funding strategy for Riverside County residents. The Plan was developed over a years-long public and community engagement effort amongst Riverside County residents, its community leaders, and local stakeholder groups to identify transportation improvements and to look at future transportation and mobility needs to help the County's growing population and economy. [Submit your feedback today!](#)



Improved
Transportation = Less Traffic
Congestion



We need your input at TrafficReliefPlan.org.

Neighboring Projects

15/91 Express Lanes Connector Project

The Riverside County Transportation Commission (RCTC) is excited to announce the 15/91 Express Lanes Connector is now open! The new connector provides Express Lanes access from the eastbound 91 to the northbound 15 and the southbound 15 to westbound 91 Express Lanes. [Click here to learn more.](#)

McKinley Street Grade Separation Project

Ramp and street closures are scheduled for January 22-25. For information and construction details, please visit the project [webpage](#) and register for text updates by texting MCKINLEY at 844-518-1409.

Caltrans Southbound 15 Closures on January 27 from 4 a.m. to 1 p.m.

Caltrans District 8 will require a full closure of the southbound 15 general purpose lanes at El Cerrito Rd. in Corona on January 27 from 4 a.m. to 1 p.m. Motorists will be diverted to the southbound 15 Express Lanes at the entry just north of Ontario Ave. Tolls will be suspended during the closure. More information is available [here.](#)

Project Background

The new non-tolled interchange is designed to improve safety, expand access to other modes of travel, reduce greenhouse gas emissions, enhance traffic flow, and support continued movement of native wildlife through the area. Construction is anticipated to be completed in 2025.



Stay Connected



(800) 519-6961



rctc.org/71-91interchange



7191Interchange@rctc.org



@7191Interchange



Text 7191INTERCHANGE to 77222

Riverside County Transportation Commission | 4080 Lemon Street, 3rd Floor, Riverside, CA
92501

[Unsubscribe invoices@arellanoassociates.com](mailto:Unsubscribe_invoices@arellanoassociates.com)

[Update Profile](#) | [Constant Contact Data Notice](#)

Sent by 7191interchange@rctc.org