



CONSTRUCTION UPDATE

Week of December 4, 2023



Nightly eastbound 91 full closures are scheduled for Monday, December 4 and Tuesday, December 5. Nightly eastbound and westbound 91 Express Lanes closures, alternating lane closures, and 71 and 91 ramp and connector closures are also scheduled through the week.

Closure details are below. Construction activity and closure schedules are subject to change.

Full Eastbound 91 Closures Continue

The Riverside County Transportation Commission's 71/91 Interchange Project will use nightly full closures of the eastbound 91 as needed.

These closures are allowing our crews to safely construct support structures for the new eastbound 91 to northbound 71 connector. Crews are building a 30-foot-tall structure over the 91 and will set more than 200 beams over the eastbound and westbound 91 lanes.

Highway and Express Lanes Closures

Date/Time	Activity and Location	Detour
Monday, December 4 – Tuesday, December 5 11 p.m. – 5 a.m.	Full closure of eastbound 91 at Green River Rd.	Regional Detour Route Local Detour Route
Monday, December 4 – Tuesday, December 5 10 p.m. – 6 a.m.	Eastbound 91 Express Lanes closed from the County Line to I-15	Regional Detour Route Local Detour Route
Monday, December 4 – Thursday, December 7 Nightly, 8 p.m. – 4 a.m. <hr/> Friday, December 8	Westbound 91 alternating lane closures from I-15 to the County Line	No detour required, since other lanes will remain open

9 p.m. – 6 a.m.		
<p>Wednesday, December 6 – Thursday, December 7 Nightly, 10 p.m. – 6 a.m.</p> <hr/> <p>Friday, December 8 Midnight – 7 a.m.</p>	Eastbound 91 alternating lane closures from the County Line to I-15	No detour required, since other lanes will remain open
<p>Wednesday, December 6 – Thursday, December 7 Nightly, 10 p.m. – 6 a.m.</p> <hr/> <p>Friday, December 8 – Saturday, December 9 Nightly, 11 p.m. – 7 a.m.</p>	Eastbound 91 Express Lanes closed from the County Line to I-15	No detour required, since other lanes will remain open
<p>Monday, December 4 – Thursday, December 7 Nightly, 8 p.m. – 4 a.m.</p> <hr/> <p>Friday, December 8 – Saturday, December 9 Nightly, 10 p.m. – 7 a.m.</p>	Westbound 91 Express Lanes closed from I-15 to the County Line	No detour required, since other lanes will remain open

Ramp Closures

Date/Time	Activity and Location	Detour
<p>Monday, December 4 – Thursday, December 7 Nightly, 10 p.m. – 6 a.m.</p> <hr/> <p>Friday, December 8 Midnight – 7 a.m.</p>	Eastbound 91 Green River Rd. on-ramp closed	Use Green River Rd. to eastbound Palisades Dr. to northbound Serfas Club Dr./Auto Center Dr.
<p>Monday, December 4 – Thursday, December 7 Nightly, 9 p.m. – 5 a.m.</p> <hr/> <p>Friday, December 8 Midnight – 6 a.m.</p>	Southbound 71 to westbound 91 connector closed	Use eastbound 91 to Serfas Club Dr./Auto Center Dr. off-ramp to westbound 91

Sky Tour



71/91
INTERCHANGE
PROJECT



Meanwhile, crews make good progress on concrete pours and earthwork...

Neighboring Projects

15/91 Express Lanes Connector Project

The Riverside County Transportation Commission (RCTC) is excited to announce the 15/91 Express Lanes Connector is now open! The new connector provides Express Lanes access from the eastbound 91 to the northbound 15 and the southbound 15 to westbound 91 Express Lanes. [Click here to learn more.](#)

Caltrans Pavement Rehab Project

Caltrans District 8 will require nightly lane reductions, connector and ramp closures in Corona for pavement rehabilitation work on the 91 and 15. For more information follow Caltrans District 8 on [Facebook](#) and [X](#).

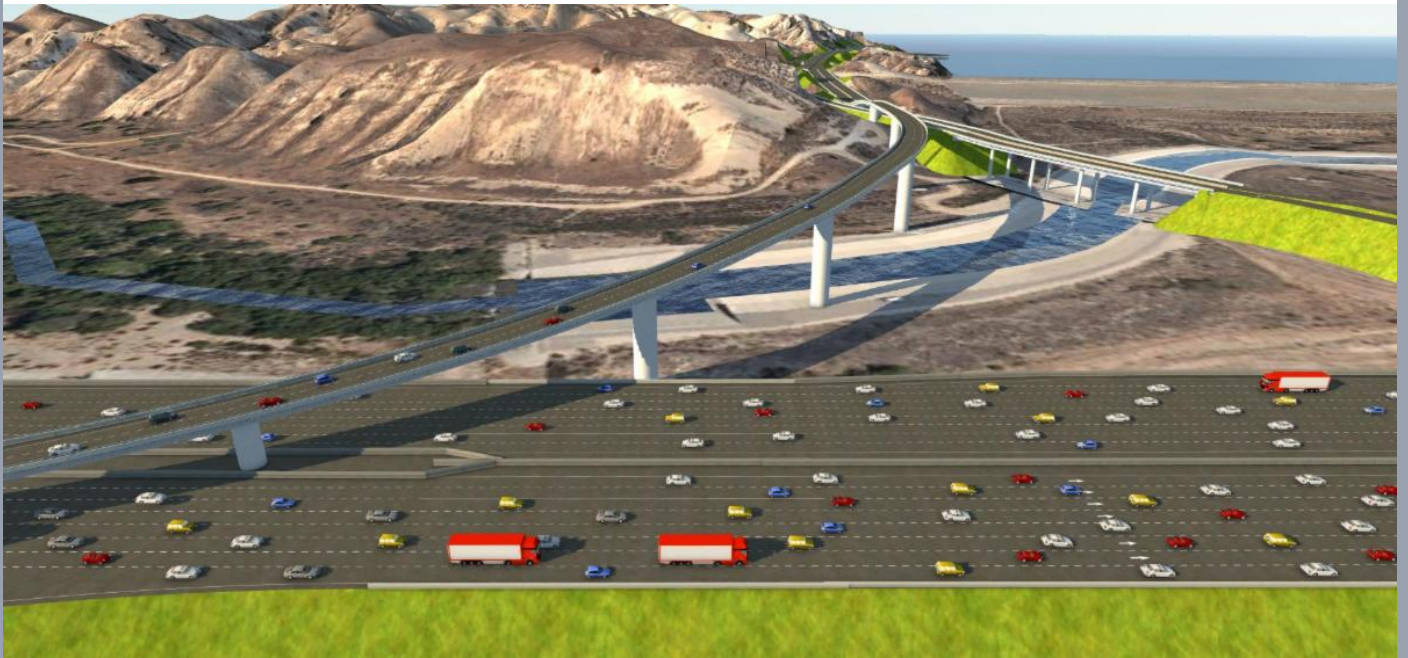
McKinley Street Grade Separation Project

Work is under way on this City of Corona project. For information and construction details, please visit the project [webpage](#) and register for text updates by texting MCKINLEY at 844-518-1409.

Project Background

The new non-tolled interchange is designed to improve safety, expand access to other modes of travel, reduce greenhouse gas emissions, enhance traffic flow, and support

continued movement of native wildlife through the area. Construction is anticipated to be completed in 2025.



Stay Connected



(800) 519-6961



rctc.org/71-91interchange



7191Interchange@rctc.org



@7191Interchange



Text 7191INTERCHANGE to 77222

Riverside County Transportation Commission | 4080 Lemon Street, 3rd Floor, Riverside, CA 92501

[Unsubscribe invoices@arellanoassociates.com](mailto:invoices@arellanoassociates.com)

[Update Profile](#) | [Constant Contact Data Notice](#)

Sent by 7191interchange@rctc.org