



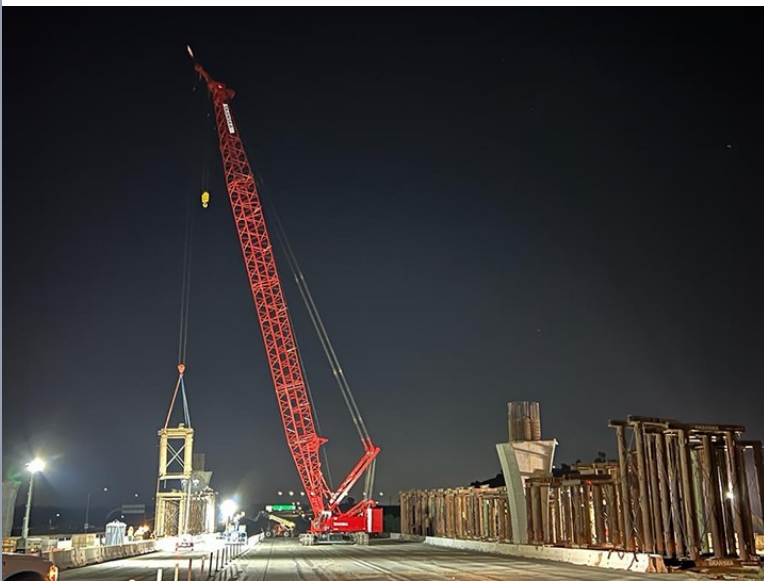
# CONSTRUCTION UPDATE

## Additional Full Eastbound 91 Closure

A nighttime full eastbound 91 closure is scheduled on Sunday morning, October 22 from 1 a.m. to 7 a.m., for crews to safely continue installing support structures over eastbound 91. The eastbound 91 Express Lanes in Riverside and Orange Counties and the eastbound 91 Green River Rd. on-ramp will also be closed from 1 a.m. – 7 a.m. Details are below.

The [15/91 Express Lanes Connector](#) has scheduled a nighttime full southbound 15 closure on Sunday, October 22 from 12 midnight to 7 a.m. from Hidden Valley Parkway to the 91. Motorists may use Hidden Valley Parkway to Main Street to access eastbound 91, westbound 91, and southbound 15. More information is available at [rctc.org/1591updates](http://rctc.org/1591updates).

## Week of October 23, 2023



Nighttime eastbound 91 full closures, lane reductions, Express Lanes closures, and ramp closures are scheduled the week of October 23 – 28 to allow crews to continue falsework installation over eastbound 91.

Closure details are below. Construction activity and closure schedules are subject to change.

**Nightly eastbound 91 full closures will continue through Tuesday, November 21, 2023. See full closure information below.**

## Full Eastbound 91 Closures Continue

The Riverside County Transportation Commission's 71/91 Interchange Project will continue nightly (**Monday through Wednesday**) full closures of the eastbound 91 **through Tuesday, November 21, 2023.**

The following closures will be scheduled:

### FULL EASTBOUND 91 CLOSURES

Green River Rd. to Serfas Club Dr./Auto Center Dr.

- **Nightly, Monday – Wednesday**  
11 p.m. – 5 a.m.

### EASTBOUND 91 EXPRESS LANES CLOSURES

Riverside and Orange Counties

- **Nightly, Monday – Wednesday**

10 p.m. – 6 a.m.

## EASTBOUND GREEN RIVER RD. ON-RAMP CLOSURES

- **Nightly, Monday – Wednesday**  
10 p.m. – 6 a.m.

These closures are allowing our crews to safely construct support structures and place beams for the new eastbound 91 to northbound 71 connector. Crews are building a 30-foot-tall structure over the 91 and will set more than 200 beams over the eastbound and westbound 91 lanes.

Additional nighttime lane reductions, 91 Express Lanes closures in Riverside County, ramp closures, and connector closures will occur Thursday – Sunday nights. Closure dates are subject to change due to weather, site conditions, construction progress, and other factors.

[Eastbound 91 Closures Details](#)

[Eastbound 91 Closure Flyer](#)

## Highway and Express Lane Closures and Reductions

Date/Time	Activity and Location	Detour
Sunday, October 22 1 a.m. – 7 a.m.	Full closure of eastbound 91 at Green River Rd.	<a href="#"><u>Regional Detour Route</u></a> <a href="#"><u>Local Detour Route</u></a>
Sunday, October 22 1 a.m. – 7 a.m.	Eastbound 91 Express Lanes closed from the County Line to the I-15	<a href="#"><u>Regional Detour Route</u></a> <a href="#"><u>Local Detour Route</u></a>
Sunday, October 22 1 a.m. – 7 a.m.	Westbound 91 Express Lanes closed from the I-15 to the County Line	No detour required, since other lanes will remain open
Monday, October 23 – Wednesday, October 25 Nightly, 11 p.m. – 5 a.m.	Full closure of eastbound 91 at Green River Rd.	<a href="#"><u>Regional Detour Route</u></a> <a href="#"><u>Local Detour Route</u></a>
Monday, October 23 – Wednesday, October 25 Nightly, 10 p.m. – 6 a.m.	Eastbound 91 Express Lanes closed from the County Line to the I-15	<a href="#"><u>Regional Detour Route</u></a> <a href="#"><u>Local Detour Route</u></a>
Thursday, October 26 10 p.m. – 6 a.m. <hr/> Friday, October 27 Midnight – 7 a.m.	Eastbound 91 lane reductions from the County Line to the I-15	No detour required, since other lanes will remain open
Monday, October 23 – Thursday, October 26 Nightly, 8 p.m. – 4 a.m. <hr/> Friday, October 27 – Saturday, October 28 Nightly, 10 p.m. – 7 a.m.	Westbound 91 Express Lanes closed from the I-15 to the County Line	No detour required, since other lanes will remain open
Thursday, October 26		

10 p.m. – 6 a.m.

Friday, October 27 –  
Saturday, October 28  
Nightly, 11 p.m. – 7 a.m.

Eastbound 91 Express  
Lanes closed from the  
County Line to the I-15

No detour required,  
since other lanes will  
remain open

## Ramp Closures

Date/Time	Activity and Location	Detour
Sunday, October 22 1 a.m. – 7 a.m.	Eastbound 91 Green River Rd. on-ramp closed	<a href="#">Use Green River Rd. to eastbound Palisades Dr. to northbound Serfas Club Dr./Auto Center Dr.</a>
Monday, October 16 – Thursday, October 19 Nightly, 10 p.m. – 6 a.m. <hr/> Friday, October 20 Midnight – 7 a.m.	Eastbound 91 Green River Rd. on-ramp closed	<a href="#">Use Green River Rd. to eastbound Palisades Dr. to northbound Serfas Club Dr./Auto Center Dr.</a>

## Closures Video



## Neighboring Projects

### 15/91 Express Lanes Connector Project

The Riverside County Transportation Commission 15/91 Express Lanes Connector Project will require ongoing lane reductions and ramp and connector closures near the 15/91

Interchange. The 15/91 Express Lanes Connector is anticipated to open by the end of the year. [Click here to learn more.](#)

### Caltrans Pavement Rehab Project

Caltrans District 8 will require nightly lane reductions, connector and ramp closures in Corona for pavement rehabilitation work on the 91 and 15. For more information follow Caltrans District 8 on [Facebook](#) and [X](#).

### McKinley Street Grade Separation Project

Work is under way on this City of Corona project. For information and construction details, please visit the project [webpage](#) and register for text updates by texting MCKINLEY at 844-518-1409.

## Project Background

The new non-tolled interchange is designed to improve safety, expand access to other modes of travel, reduce greenhouse gas emissions, enhance traffic flow, and support continued movement of native wildlife through the area. Construction is anticipated to be completed in 2025.



## Stay Connected



(800) 519-6961



[rctc.org/71-91interchange](https://rctc.org/71-91interchange)



[7191Interchange@rctc.org](mailto:7191Interchange@rctc.org)



@7191Interchange



Text 7191INTERCHANGE to 77222

Riverside County Transportation Commission | 4080 Lemon Street, 3rd Floor, Riverside, CA 92501

[Unsubscribe invoices@arellanoassociates.com](mailto:Unsubscribe_invoices@arellanoassociates.com)

[Update Profile](#) | [Constant Contact Data Notice](#)

Sent by 7191interchange@rctc.org