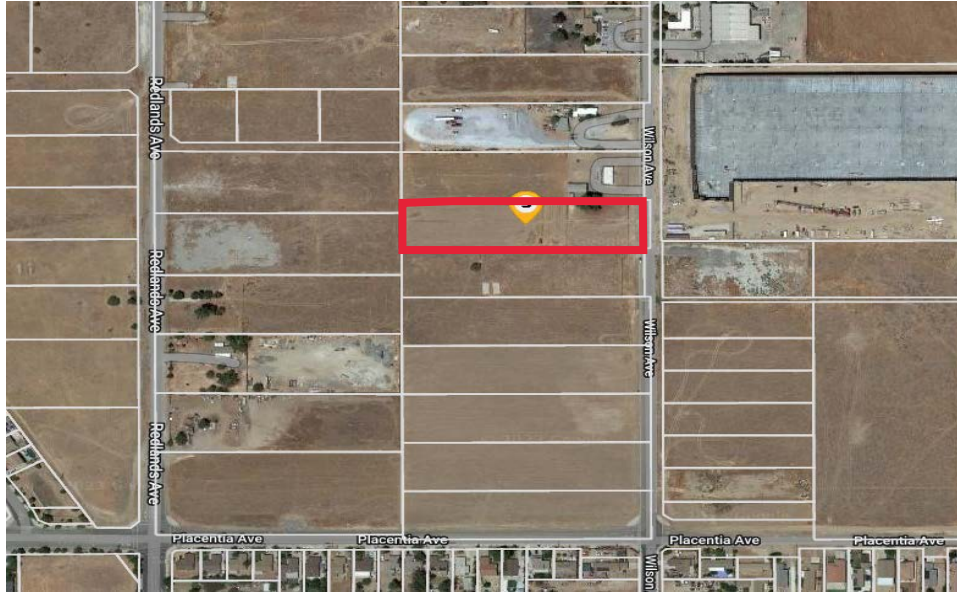




LAND FOR LEASE

WILSON AVE AND W PLACENTIA AVE, PERRIS, CA
APN 300-210-016



PROPERTY HIGHLIGHTS

Parcel was acquired by Riverside County Transportation Commission (RCTC) for the Mid County Parkway Project.

Lot size: 108,464 sf / 2.49 ac

One-to-five-year lease available

Up to 108,464 sf / 2.49 ac for lease

Zoning: Light Industrial

FOR MORE INFORMATION, PLEASE VISIT <https://www.rctc.org/doing-business/property/> or Contact Paul Mim Mack, Senior Management Analyst-Right of Way

Phone 951.787.7141

Email row@rctc.org