



**91 REFRESH
PROJECT**

CONSTRUCTION UPDATE

A Project of the Riverside County Transportation Commission



JULY 28, 2023

LANE REDUCTIONS AND RAMP CLOSURES

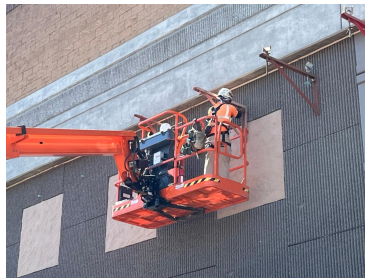
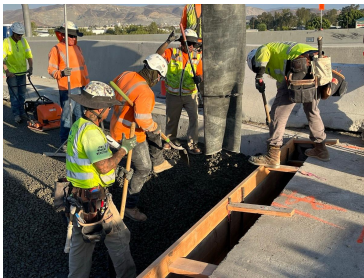
The 91 Refresh project in Corona has scheduled lane reductions and ramp closures, **July 31- August 4**. Please note that some of the closures will occur Saturday nights. See details below.

Westbound 91 Serfas Club Dr. On-Ramp Closures

- Monday, July 31 to Thursday, August 3, nightly, 8 p.m. to 4:30 a.m.
- Friday, August 4, 8 p.m. to 7:30 a.m.

Westbound 91 Lane Reductions, Maple St. to Northbound 71 Connector

- Monday, July 31 to Thursday, August 3, nightly, 7:30 p.m. to 4:30 a.m.
- Friday, August 4, 8 p.m. to 7:30 a.m.



Please note that construction activity is subject to change.

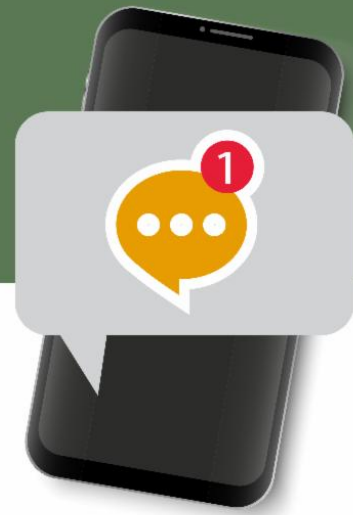
ABOUT THE PROJECT

The Riverside County Transportation Commission, in partnership with Caltrans, is delivering the 91 Refresh Project. This project will repave lanes and make repairs to sound walls and associated concrete barriers along the outer portions of eastbound and westbound 91 in Corona. Work will take place along the 91, mainly between the Lincoln Avenue Interchange and Interstate 15, an area with a long history of roadway settlement. Temporary lane shifts, weekend full closures, and lane closures will allow crews to safely complete the repaving and repair work. The project is expected to be completed this summer.

STRAIGHT TO YOUR MOBILE DEVICE

Text **91REFRESH** to 77222

to sign up for text message updates



Visit our website

STAY CONNECTED



info@rctc.org



rctc.org/91refresh



951-787-7141



91refresh to 77222



RCTC | 4080 Lemon Street, 3rd Floor, Riverside, CA 92501

[Unsubscribe 15project@rctc.org](mailto:15project@rctc.org)

[Update Profile](#) | [Constant Contact Data Notice](#)

Sent by info@rctc.org powered by



Try email marketing for free today!