



# CONSTRUCTION UPDATE

A Project of the Riverside County Transportation Commission



## JULY 21, 2023

### NIGHTLY CLOSURES

Construction activity will require nightly southbound 15, ramp, and lane closures for roadway work, **July 21-28**. Closures will allow crews to safely reconfigure the lanes and continue building the 15/91 Express Lanes Connector. See details below.

The southbound 15 from Hidden Valley Parkway to the 91 will be fully closed nightly, 10 p.m. to 5 a.m., Wednesday, July 26 and Friday, July 28.

Motorists may use Hidden Valley Pkwy. to Main St. to access westbound and eastbound 91. Detour signs will be posted.

**Please avoid the area or allow extra travel time.**



#### **Southbound 15 to Westbound 91 Connector Closure**

- Friday, July 21, 10 p.m. to 5 a.m.

#### **Southbound 15 Full Closure, Hidden Valley Pkwy. to the 91**

- Wednesday, July 26, 10 p.m. to 5 a.m.
- Friday, July 28, 10 p.m. to 5 a.m.

#### **Southbound 15 Hidden Valley Pkwy. On-Ramp Closures**

- Wednesday, July 26, 9 p.m. to 5 a.m.
- Friday, July 28, 9 p.m. to 5 a.m.

#### **Southbound 15 to Eastbound 91 Connector Closures**

- Monday, July 24 and Tuesday, July 25, nightly, 8 p.m. to 5 a.m.

#### **Eastbound 91 Lane Reductions, Main St. to McKinley St.**

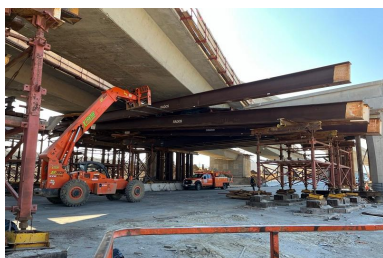
- Monday, July 24 and Tuesday, July 25, nightly, 9 p.m. to 6 a.m.

#### **Eastbound 91 On-Ramp Closure, Main St.**

- Monday, July 24 and Tuesday, July 25, nightly, 9 p.m. to 6 a.m.

#### **Westbound 91 Lane Reductions, McKinley St. to Main St.**

- Monday, July 24 to Thursday, July 27, nightly, 8 p.m. to 5 a.m.
- Friday, July 28, 10 p.m. to 6 a.m.



## NEIGHBORING PROJECTS

### McKinley Street Grade Separation Project

Work is under way on this City of Corona project. For information and construction details, please visit the project [webpage](#) and register for text updates by texting MCKINLEY at 844-518-1409.

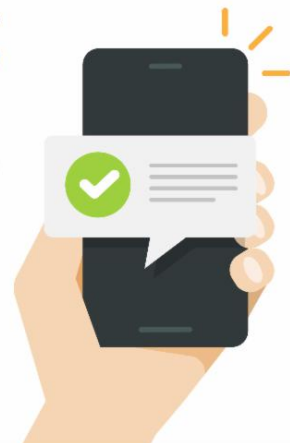
### 71/91 Interchange

RCTC is building this new, non-tolled interchange to improve safety, expand access to other modes of travel, reduce greenhouse gas emissions, enhance traffic flow, and support continued movement of native wildlife through the area. Construction is anticipated to be completed in 2025. Stay connected with construction updates by texting 7191INTERCHANGE to 77222 or visiting the project [webpage](#).

## STRAIGHT TO YOUR MOBILE DEVICE

Text **CONNECTOR** to  
**(844) 771-0995**

to sign up for text  
message updates



## PROJECT OVERVIEW

The Riverside County Transportation Commission, in partnership with Caltrans, is building the 15/91 Express Lanes Connector to link the 15 Express Lanes and the 91 Express Lanes for seamless, reliable travel. New connections will be provided:

- From the eastbound 91 Express Lanes to the northbound 15 Express Lanes and
- From the southbound 15 Express Lanes to the westbound 91 Express Lanes

The project also is extending both the eastbound 91 outside general-purpose lane and the eastern end of the 91 Express Lanes approximately one-half mile east to Promenade Avenue to help with vehicle merging in this area. Construction began in April 2021 and the connector is expected to open in 2023.



[Visit our website](#)

**STAY CONNECTED**

[f](#) [t](#) [i](#) | 
 [rctc.org/15-91connector](https://www.rctc.org/15-91connector) | 
 (844) 415-9777 | 
 (844) 771-0995

RCTC- 15/91 Express Lanes Connector | 4080 Lemon Street, 3rd Floor, Riverside, CA 92501

[Unsubscribe 15project@rctc.org](mailto:15project@rctc.org)

[Update Profile](#) | [Constant Contact Data Notice](#)

Sent by [15-91connector@rctc.org](mailto:15-91connector@rctc.org) powered by

