



## 91 REFRESH PROJECT

# CONSTRUCTION UPDATE

A Project of the Riverside County Transportation Commission



JUNE 9, 2023

## LANE, CONNECTOR, AND RAMP CLOSURES

The 91 Refresh project in Corona has scheduled lane reductions and ramp closures, **June 10-17**. Please note that some of the closures will occur Saturday nights. See details below.

### Westbound 91 Serfas Club Dr. On-Ramp Closures

- Saturday, June 10, 10 p.m. to 8:30 a.m.
- Monday, June 12 to Thursday, June 15, nightly, 8 p.m. to 4:30 a.m.
- Friday, June 16, 8 p.m. to 7:30 a.m.
- Saturday, June 17, 10 p.m. to 8:30 a.m.

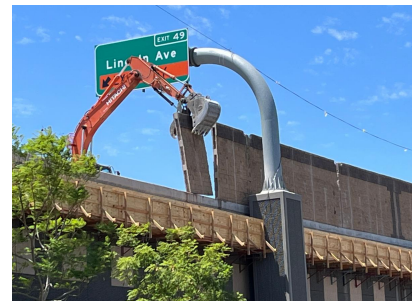
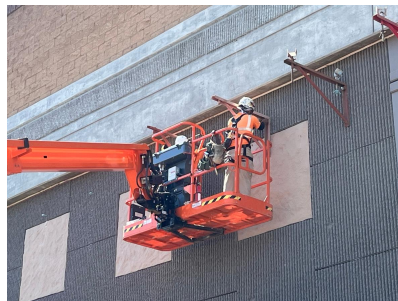
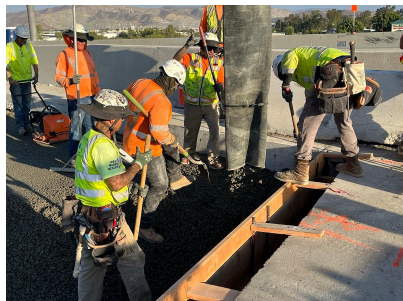
### Westbound 91 Lane Reductions, Maple St. to Northbound 71 Connector

- Saturday, June 10, 10 p.m. to 8:30 a.m.
- Monday, June 12 to Thursday, June 15, nightly, 7:30 p.m. to 4:30 a.m.
- Friday, June 16, 8 p.m. to 7:30 a.m.
- Saturday, June 17, 10 p.m. to 8:30 a.m.

## DRAINAGE WORK

Crews continue drainage work on Bollero Place and Wardlow Road, adjacent to the 91. Work is scheduled during daytime hours. Flaggers also will help motorists travel through the area safely. Street parking may be restricted during construction work.

- Monday, June 12 to Friday, June 16, 7 a.m. to 4:30 p.m.



*Please note that construction activity is subject to change.*

## ABOUT THE PROJECT

The Riverside County Transportation Commission, in partnership with Caltrans, is delivering the 91 Refresh Project. This project will repave lanes and make repairs to sound walls and associated concrete barriers along the outer portions of eastbound and westbound 91 in Corona. Work will take place along the 91, mainly between the Lincoln Avenue Interchange and Interstate 15, an area with a long history of roadway settlement. Temporary lane shifts, weekend full closures, and lane closures will allow crews to safely complete the repaving and repair work. The project is expected to be completed this summer.



### 71/91 INTERCHANGE PROJECT WEEKEND CLOSURES, JUNE 9-12

The 71/91 Interchange Project will require roadway closures the weekend of June 9-12.

- Nighttime Eastbound 91 Full Closure in Corona
- Weekend Full Closure Eastbound and Westbound 91 Express Lanes in Riverside County
- Nighttime Eastbound 91 Green River Rd. On-Ramp

**The southbound 71 connectors to eastbound and westbound 91 will remain open. The eastbound and westbound 91 general purpose lanes will remain open during daytime hours.**

For the latest information on these closures, please visit [rctc.org/7191closures](http://rctc.org/7191closures).

## STRAIGHT TO YOUR MOBILE DEVICE

Text **91REFRESH**  
to **77222**

**to sign up for text  
message updates**



Visit our website

## STAY CONNECTED



info@rctc.org



rctc.org/91refresh



951-787-7141



91refresh to 77222



RCTC | 4080 Lemon Street, 3rd Floor, Riverside, CA 92501

[Unsubscribe 15project@rctc.org](mailto:15project@rctc.org)

[Update Profile](#) | [Constant Contact Data Notice](#)

Sent by info@rctc.org powered by



Try email marketing for free today!