



# CONSTRUCTION UPDATE

A Project of the Riverside County Transportation Commission

JUNE 23, 2023

## NIGHTLY CLOSURES

Construction activity will require nighttime lane reductions and connector and ramp closures for roadway work, **June 26-30**, as crews continue building the 15/91 Express Lanes Connector. See details below.

### Northbound 15 Lanes Reductions, Magnolia Ave. to Hidden Valley Pkwy.

- Monday June 26, 8 p.m. to 5 a.m.

### Southbound 15 to Westbound 91 Connector Closures

- Monday, June 26 to Thursday, June 29, nightly 8 p.m. to 5 a.m.
- Friday, June 30, 10 p.m. to 5 a.m.

### Southbound 15 Lane Reductions, Hidden Valley Pkwy. to the 91

- Monday, June 26 to Thursday, June 29, nightly 9 p.m. to 5 a.m.
- Friday, June 30, 9 pm. to 6 a.m.

### Eastbound 91 On-Ramp Closure, Main St.

- Monday, June 26 to Thursday, June 29, nightly 9 p.m. to 5 a.m.
- Friday, June 30, 10 p.m. to 8 a.m.

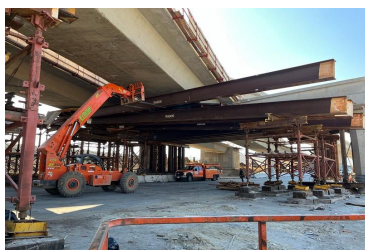
### Eastbound and Westbound 91 to Northbound 15 Connector Closure

- Monday, June 26, 8 p.m. to 4 a.m.

## PROJECT MILESTONES

### The 15/91 Express Lanes Connector project marks two years of construction

Crews have made significant progress over the past few months! Watch a recap of key project milestones.



Please note that construction activity is subject to change.

## NEIGHBORING PROJECTS

### McKinley Street Grade Separation Project

Work is under way on this City of Corona project. For information and construction details, please visit the project [webpage](#) and register for text updates by texting MCKINLEY at 844-518-1409.

### 71/91 Interchange

RCTC is building this new, non-tolled interchange to improve safety, expand access to other modes of travel, reduce greenhouse gas emissions, enhance traffic flow, and support continued movement of native wildlife through the area. Construction is anticipated to be completed in 2025. Stay connected with construction updates by texting 7191INTERCHANGE to 77222 or visiting the project [webpage](#).

## STRAIGHT TO YOUR MOBILE DEVICE

# Text **CONNECTOR** to **(844) 771-0995**

## to sign up for text message updates



## PROJECT OVERVIEW

The Riverside County Transportation Commission, in partnership with Caltrans, is building the 15/91 Express Lanes Connector to link the 15 Express Lanes and the 91 Express Lanes for seamless, reliable travel. New connections will be provided:

- From the eastbound 91 Express Lanes to the northbound 15 Express Lanes and
- From the southbound 15 Express Lanes to the westbound 91 Express Lanes

The project also is extending both the eastbound 91 outside general-purpose lane and the eastern end of the 91 Express Lanes approximately one-half mile east to Promenade Avenue to help with vehicle merging in this area. Construction began in April 2021 and the connector is expected to open in 2023.



Visit our website

## STAY CONNECTED



@1591Connector



rctc.org/15-91connector



(844) 415-9777



(844) 771-0995

RCTC- 15/91 Express Lanes Connector | 4080 Lemon Street, 3rd Floor, Riverside, CA 92501

[Unsubscribe 15project@rctc.org](mailto:15project@rctc.org)

[Update Profile](#) | [Constant Contact Data Notice](#)

Sent by 15-91connector@rctc.org powered by



Try email marketing for free today!