

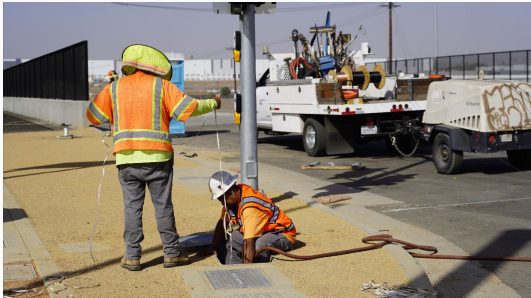


[En español](#)

Construction Update: Week of April 10, 2023

The I-215 Placentia Interchange Project will require daytime ramp closures on **April 11 and 12** to allow crews to safely work on closeout activities for the project. Crews will close the 215 southbound and northbound on-and off-ramps from **7 a.m. to 3 p.m., daily**. Only one ramp will be closed at a time during the closure window.

Please allow for extra travel time and use alternate routes during the closures.

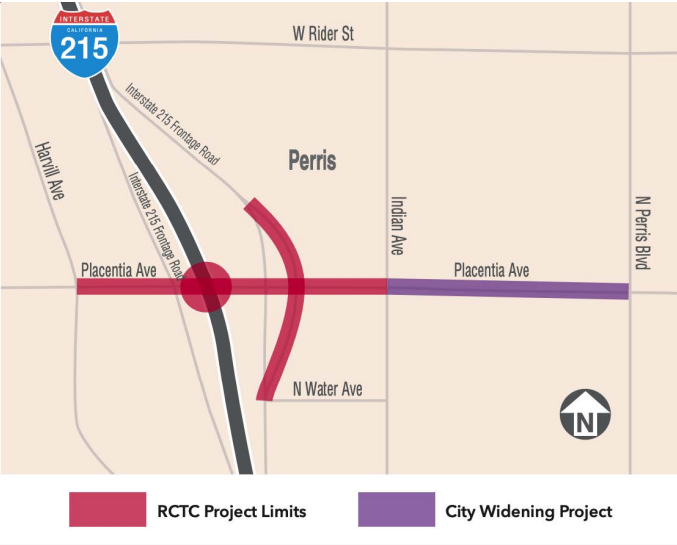


Project Background

The Riverside County Transportation Commission, in partnership with Caltrans and the Federal Highway Administration opened the Interstate 215 Placentia Avenue Interchange in Perris on December 13, 2022. Motorists in Perris and the San Jacinto valleys now have another option to enter and exit I-215. The new interchange includes on- and off-ramps at Placentia Avenue, which provide an alternative to the Ramona Expressway ramps to the north and the Nuevo Road ramps to the south. Bridges on Placentia Avenue were widened over I-215 and the railroad tracks.

The project also realigned East Frontage Road, constructed detention basins to reduce local street flooding, and added sidewalks, bicycle lanes, and a barrier-separated equestrian path along Placentia Avenue.

Construction Area



Stay Connected



Copyright © 2023 RCTC, All rights reserved.

Want to change how you receive these emails?
You can [update your preferences](#) or [unsubscribe from this list](#).