



**91 REFRESH  
PROJECT**

## **CONSTRUCTION UPDATE**

A Project of the Riverside County Transportation Commission



**MARCH 24, 2023**

## **LANE, CONNECTOR, AND RAMP CLOSURES**

The 91 Refresh project in Corona has scheduled lane reductions and closures of lanes, connectors, and ramps, **March 25 - April 1**. Please note that some of the closures will occur during daytime hours and Saturday nights. See details below.

More rain is in the forecast for late March, which may affect this closure schedule. Please watch for updates.

### **Northbound 15 to Westbound 91 Connector Closures**

- Saturday, March 25, 11 p.m. to 8 a.m.
- Monday, March 27 to Thursday, March 30, nightly, 8 p.m. to 4:30 a.m.
- Friday, March 31, 10 p.m. to 6:30 a.m.
- Saturday, April 1, 11 p.m. to 8 a.m.

### **Southbound 15 to Westbound 91 Connector Closures**

- Saturday, March 25, 11 p.m. to 8 a.m.
- Monday, March 27 to Thursday, March 30, nightly, 8 p.m. to 4:30 a.m.
- Friday, March 31, 10 p.m. to 6:30 a.m.
- Saturday, April 1, 11 p.m. to 8 a.m.

### **Westbound 91 Main St. On-Ramp Daytime Lane Reductions**

- Monday, March 27 to Friday, March 31, daily, 9 a.m. to 3 p.m.

### **Westbound 91 Lane Reductions, Main St. to Lincoln Ave.**

- Monday, March 27 to Thursday, March 30, nightly, 9 p.m. to 6 a.m.
- Friday, March 31, 8 p.m. to 7:30 a.m.
- Saturday, April 1, 10 p.m. to 8:30 a.m.

### **Westbound 91 Main St. On- and Off-Ramp Closures**

- Saturday, March 25, 10 p.m. to 8:30 a.m.
- Monday, March 27 to Thursday, March 30, nightly, 8 p.m. to 4:30 a.m.
- Friday, March 31, 8 p.m. to 7:30 a.m.
- Saturday, April 1, 10 p.m. to 8:30 a.m.

### **Westbound 91 Lincoln Ave. Off-Ramp Closures**

- Saturday, March 25, 10 p.m. to 8:30 a.m.
- Monday, March 27 to Thursday, March 30, nightly, 8 p.m. to 4:30 a.m.
- Friday, March 31, 8 p.m. to 7:30 a.m.
- Saturday, April 1, 10 p.m. to 8:30 a.m.

### **Westbound 91 Lane Reductions, I-15 to Smith Ave. Overcrossing**

- Saturday, March 25, 10 p.m. to 8:30 a.m.

### **Westbound 91 Express Lanes Closures, McKinley St. to County Line**

- Saturday, March 25, 10 p.m. to 7 a.m.
- Monday, March 27 to Wednesday, March 22, nightly, 9:30 p.m. to 4:30 a.m.
- Friday, March 31 and Saturday, April 1, nightly, 8 p.m. to 4 a.m.

### **Eastbound 91 Lane Reductions, Lincoln Ave. to Main St.**

- Saturday, March 25, 11 p.m. to 9 a.m.
- Monday, March 27 to Thursday, March 30, nightly, 9 p.m. to 6 a.m.
- Friday, March 31, 10:30 p.m. to 8 a.m.
- Saturday, April 1, 11 p.m. to 9 a.m.

### **Eastbound 91 Lincoln Ave. On-Ramp Closures**

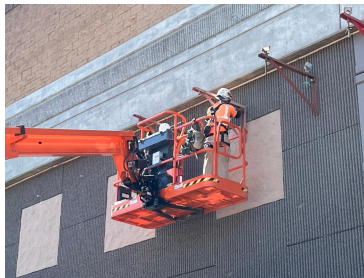
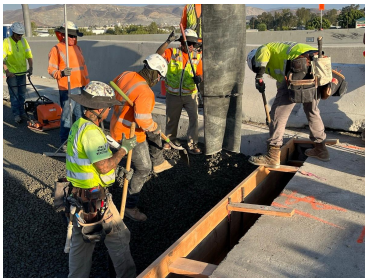
- Saturday, March 25, 11 p.m. to 9 a.m.
- Monday, March 27 to Thursday, March 30, nightly, 9 p.m. to 5 a.m.
- Friday, March 31, 10:30 p.m. to 8 a.m.
- Saturday, April 1, 11 p.m. to 9 a.m.

### **Eastbound 91 Main St. On-and Off-Ramp Closures**

- Saturday, March 25, 11 p.m. to 9 a.m.
- Monday, March 27 to Thursday, March 30, nightly, 9 p.m. to 5 a.m.
- Friday, March 31, 10:30 p.m. to 8 a.m.
- Saturday, April 1, 11 p.m. to 9 a.m.

### **Eastbound 91 Express Lanes Closures, County Line to McKinley St.**

- Saturday, March 25, 10 p.m. to 6 a.m.
- Monday, March 27 to Thursday, March 30, nightly, 8 p.m. to 4 a.m.
- Friday, March 31 and Saturday, April 1, nightly, 10 p.m. to 6 a.m.



*Please note that construction activity is subject to change.*

## **ABOUT THE PROJECT**

The Riverside County Transportation Commission, in partnership with Caltrans, is delivering the 91 Refresh Project. This project will repave lanes and make repairs to sound walls and associated concrete barriers along the outer portions of eastbound and westbound 91 in Corona. Work will take place along the 91, mainly between the Lincoln Avenue Interchange and Interstate 15, an area with a long history of roadway settlement. Temporary lane shifts, weekend full closures, and lane closures will allow crews to safely complete the repaving and repair work. The project is expected to be completed this spring.

## **NEIGHBORING PROJECT**

### **71/91 Interchange**

RCTC is building this new, non-tolled interchange to improve safety, expand access to other modes of travel, reduce greenhouse gas emissions, enhance traffic flow, and support continued movement of native wildlife through the area. Construction is anticipated to be completed in 2025. Stay connected with construction updates by texting 7191INTERCHANGE to 77222 or visiting the project [webpage](#).

**STRAIGHT TO YOUR MOBILE DEVICE**

Text **91REFRESH**  
to **77222**

to sign up for text  
message updates



Visit our website

STAY CONNECTED



[info@rctc.org](mailto:info@rctc.org)



[rctc.org/91refresh](http://rctc.org/91refresh)



951-787-7141



91refresh to 77222



RCTC | 4080 Lemon Street, 3rd Floor, Riverside, CA 92501

[Unsubscribe 15project@rctc.org](mailto:15project@rctc.org)

[Update Profile](#) | [Constant Contact Data Notice](#)

Sent by [info@rctc.org](mailto:info@rctc.org) powered by



Try email marketing for free today!