



**91 REFRESH  
PROJECT**

## **CONSTRUCTION UPDATE**

A Project of the Riverside County Transportation Commission



**MARCH 3, 2023**

### **LANE, CONNECTOR, AND RAMP CLOSURES**

The 91 Refresh project in Corona has scheduled lane reductions and closures of lanes, connectors, and ramps, **March 4-11**. Please note that some of the closures will occur during daytime hours and Saturday nights. See details below.

#### **Northbound 15 to Westbound 91 Connector Closures**

- Saturday, March 4, 11 p.m. to 8 a.m.
- Monday, March 6 to Thursday, March 9, nightly, 8 p.m. to 4:30 a.m.
- Friday, March 10, 10 p.m. to 6:30 a.m.
- Saturday, March 11, 11 p.m. to 8 a.m.

#### **Westbound 91 Main St. On-Ramp Daytime Lane Reductions**

- Monday, March 6 to Friday, March 10, daily, 9 a.m. to 3 p.m.

#### **Westbound 91 Main St. On- and Off-Ramp Closures**

- Saturday, March 4, 10 p.m. to 8:30 a.m.
- Monday, March 6 to Thursday, March 9, nightly, 8 p.m. to 4:30 a.m.
- Friday, March 10, 8 p.m. to 7:30 a.m.
- Saturday, March 11, 10 p.m. to 8:30 a.m.

#### **Westbound 91 Lincoln Ave. Off-Ramp Closures**

- Saturday, March 4, 10 p.m. to 8:30 a.m.
- Monday, March 6 to Thursday, March 9, nightly, 8 p.m. to 4:30 a.m.
- Friday, March 10, 8 p.m. to 7:30 a.m.
- Saturday, March 11, 10 p.m. to 8:30 a.m.

#### **Westbound 91 Lane Reductions, I-15 to Smith Ave. Overcrossing**

- Saturday, March 4, 10 p.m. to 8:30 a.m.
- Monday, March 6 to Thursday, March 9, nightly, 7:30 p.m. to 4:30 a.m.
- Friday, March 10, 8 p.m. to 7:30 a.m.
- Saturday, March 11, 10 p.m. to 8:30 a.m.

#### **Westbound 91 Express Lanes Closures, McKinley St. to County Line**

- Saturday, March 4, 10 p.m. to 7 a.m.
- Monday, March 6 to Thursday, March 9, nightly, 8 p.m. to 4 a.m.
- Friday, March 10 and Saturday, March 11, nightly, 10 p.m. to 7 a.m.

#### **Eastbound 91 Lane Reductions, Lincoln Ave. to McKinley St.**

- Saturday, March 4, 11 p.m. to 9 a.m.
- Monday, March 6 to Thursday, March 9, nightly, 9 p.m. to 6:30 a.m.
- Friday, March 10, 10:30 p.m. to 8 a.m.
- Saturday, March 11, 11 p.m. to 9 a.m.

#### **Eastbound 91 Lincoln Ave. On-Ramp Closures**

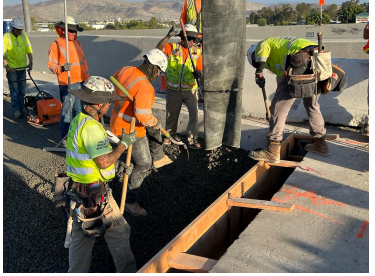
- Saturday, March 4, 11 p.m. to 9 a.m.
- Monday, March 6 to Thursday, March 9, nightly, 9 p.m. to 5:30 a.m.
- Friday, March 10, 10:30 p.m. to 8 a.m.
- Saturday, March 11, 11 p.m. to 9 a.m.

#### **Eastbound 91 Main St. On-and Off-Ramp Closures**

- Saturday, March 4, 11 p.m. to 9 a.m.
- Monday, March 6 to Thursday, March 9, nightly, 9 p.m. to 5:30 a.m.
- Friday, March 10, 10:30 p.m. to 8 a.m.
- Saturday, March 11, 11 p.m. to 9 a.m.

#### **Eastbound 91 Express Lanes Closures, County Line to McKinley St.**

- Saturday, March 4, 11 p.m. to 7 a.m.
- Monday, March 6, 10 p.m. to 6 a.m.
- Tuesday, March 7 and Thursday, March 9, nightly, 10 p.m. to 4 a.m.
- Friday, March 10 and Saturday, March 11, nightly, 11 p.m. to 7 a.m.



Please note that construction activity is subject to change.

## ABOUT THE PROJECT

The Riverside County Transportation Commission, in partnership with Caltrans, is delivering the 91 Refresh Project. This project will repave lanes and make repairs to sound walls and associated concrete barriers along the outer portions of eastbound and westbound 91 in Corona. Work will take place along the 91, mainly between the Lincoln Avenue Interchange and Interstate 15, an area with a long history of roadway settlement. Temporary lane shifts, weekend full closures, and lane closures will allow crews to safely complete the repaving and repair work. The project is expected to be completed this spring.

## NEIGHBORING PROJECT

**71/91 Interchange**  
RCTC is building this new, non-tolled interchange to improve safety, expand access to other modes of travel, reduce greenhouse gas emissions, enhance traffic flow, and support continued movement of native wildlife through the area. Construction is anticipated to be completed in 2025. Stay connected with construction updates by texting 7191INTERCHANGE to 77222 or visiting the project [webpage](#).

## STRAIGHT TO YOUR MOBILE DEVICE





Text **91REFRESH**  
to **77222**

to sign up for text  
message updates



Visit our website

### STAY CONNECTED

 info@rctc.org	 rctc.org/91refresh	 951-787-7141	 91refresh to 77222
--	---	---	---



Notice

Sent by [byinfo@rctc.org](mailto:byinfo@rctc.org) powered by



Try email marketing for free today!