



FEBRUARY 24, 2023

LANE, CONNECTOR, AND RAMP CLOSURES

The 91 Refresh project in Corona has scheduled lane reductions and closures of lanes, connectors, and ramps, **February 25 to March 4**. Please note that some of the closures will occur during daytime hours and Saturday nights. See details below. **Note: Winter storms may require work to be postponed; please follow @theRCTC for the latest closure updates.**

Northbound 15 to Westbound 91 Connector Closures

- Saturday, February 25, 11 p.m. to 8 a.m.
- Monday, February 27 to Thursday, March 2, nightly, 8 p.m. to 4:30 a.m.
- Friday, March 3, 10 p.m. to 6:30 a.m.
- Saturday, March 4, 11 p.m. to 8 a.m.

Southbound 15 to Westbound 91 Connector Closures

- Saturday, February 25, 11 p.m. to 8 a.m.
- Monday, February 27 to Thursday, March 2, nightly, 8 p.m. to 4:30 a.m.
- Friday, March 3, 10 p.m. to 6:30 a.m.
- Saturday, March 4, 11 p.m. to 8 a.m.

Westbound 91 Main St. On-Ramp Daytime Lane Reductions

- Monday, February 27 to Friday, March 3, daily, 9 a.m. to 3 p.m.

Westbound 91 Main St. On- and Off-Ramp Closures

- Saturday, February 25, 10 p.m. to 8:30 a.m.
- Monday February 27 to Thursday, March 2, nightly, 8 p.m. to 4:30 a.m.
- Friday, March 3, 8 p.m. to 7:30 a.m.
- Saturday, March 4, 10 p.m. to 8:30 a.m.

Westbound 91 Lincoln Ave. Off-Ramp Closures

- Saturday, February 25, 10 p.m. to 8:30 a.m.
- Monday February 27 to Thursday, March 2, nightly, 8 p.m. to 4:30 a.m.
- Friday, March 3, 8 p.m. to 7:30 a.m.
- Saturday, March 4, 10 p.m. to 8:30 a.m.

Westbound 91 Lane Reductions, I-15 to Smith Ave. Overcrossing

- Saturday, February 25, 10 p.m. to 8:30 a.m.
- Monday February 27 to Thursday, March 2, nightly, 7:30 p.m. to 4:30 a.m.
- Friday, March 3, 8 p.m. to 7:30 a.m.
- Saturday, March 4, 10 p.m. to 8:30 a.m.

Westbound 91 Express Lanes Closures, McKinley St. to County Line

- Saturday, February 25, 10 p.m. to 7 a.m.
- Monday February 27 to Thursday, March 2, nightly, 8 p.m. to 4 a.m.
- Friday, March 3 and Saturday, March 4, nightly, 10 p.m. to 7 a.m.

Eastbound 91 Lane Reductions, Lincoln Ave. to McKinley St.

- Saturday, February 25, 11 p.m. to 9 a.m.
- Monday, February 27 to Thursday, March 2, nightly, 9 p.m. to 6:30 a.m.
- Friday, March 3, 10:30 p.m. to 8 a.m.
- Saturday, March 4, 11 p.m. to 9 a.m.

Eastbound 91 Lincoln Ave. On-Ramp Closures

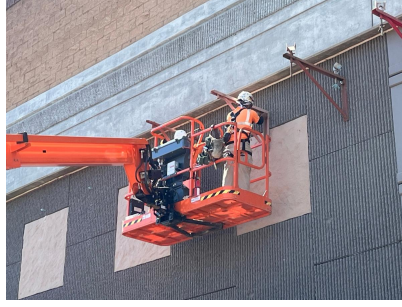
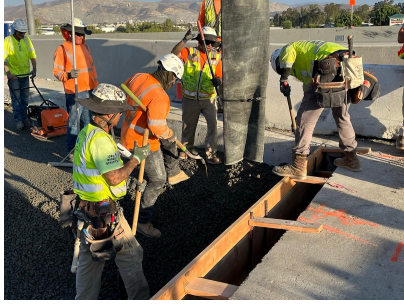
- Saturday, February 25, 11 p.m. to 9 a.m.
- Monday, February 27 to Thursday, March 2, nightly, 9 p.m. to 5:30 a.m.
- Friday, March 3, 10:30 p.m. to 8 a.m.
- Saturday, March 4, 11 p.m. to 9 a.m.

Eastbound 91 Main St. On-and Off-Ramp Closures

- Saturday, February 25, 11 p.m. to 9 a.m.
- Monday, February 27 to Thursday, March 2, nightly, 9 p.m. to 5:30 a.m.
- Friday, March 3, 10:30 p.m. to 8 a.m.
- Saturday, March 4, 11 p.m. to 9 a.m.

Eastbound 91 Express Lanes Closures, County Line to McKinley St.

- Saturday, February 25, 11 p.m. to 7 a.m.
- Monday February 27, 10 p.m. to 6 a.m.
- Tuesday, February 28 and Wednesday, March 1, nightly, 10 p.m. to 4 a.m.
- Thursday, March 2, 10 p.m. to 6 a.m.
- Friday, March 3 and Saturday, March 4, nightly, 11 p.m. to 7 a.m.



Please note that construction activity is subject to change.

ABOUT THE PROJECT

The Riverside County Transportation Commission, in partnership with Caltrans, is delivering the 91 Refresh Project. This project will repave lanes and make repairs to sound walls and associated concrete barriers along the outer portions of eastbound and westbound 91 in Corona. Work will take place along the 91, mainly between the Lincoln Avenue Interchange and Interstate 15, an area with a long history of roadway settlement. Temporary lane shifts, weekend full closures, and lane closures will allow crews to safely complete the repaving and repair work. The project is expected to be completed this spring.

NEIGHBORING PROJECT

71/91 Interchange

RCTC is building this new, non-tolled interchange to improve safety, expand access to other modes of travel, reduce greenhouse gas emissions, enhance traffic flow, and support continued movement of native wildlife through the area. Construction is anticipated to be completed in 2025. Stay connected with construction updates by texting 7191INTERCHANGE to 77222 or visiting the project [webpage](#).

STRAIGHT TO YOUR MOBILE DEVICE

Text **91REFRESH**
to **77222**

to sign up for text
message updates



Visit our website

STAY CONNECTED



info@rctc.org



rctc.org/91refresh



951-787-7141



91refresh to 77222



RCTC | 4080 Lemon Street, 3rd Floor, Riverside, CA 92501

[Unsubscribe 15project@rctc.org](mailto:15project@rctc.org)

[Update Profile](#) | [Constant Contact Data Notice](#)

Sent by info@rctc.org powered by



Try email marketing for free today!