



**91 REFRESH
PROJECT**

CONSTRUCTION UPDATE

A Project of the Riverside County Transportation Commission



FEBRUARY 10, 2023

LANE, CONNECTOR, AND RAMP CLOSURES

The 91 Refresh project in Corona has scheduled nighttime lane reductions and closures of lanes, connectors, and ramps, **February 11-16**. Please note that some of the closures are occurring Saturday night. See details below.

Northbound 15 to Westbound 91 Connector Closure

- Saturday, February 11, 11 p.m. to 8 a.m.

Southbound 15 to Westbound 91 Connector Closure

- Saturday, February 11, 11 p.m. to 8 a.m.

Eastbound 91 Lane Reductions, Lincoln Ave. to McKinley St.

- Monday, February 13 to Thursday, February 16, nightly, 9 p.m. to 6:30 a.m.

Eastbound 91 Lincoln Ave. On-Ramp Closures

- Monday, February 13 to Thursday, February 16, nightly, 9 p.m. to 5:30 a.m.

Eastbound 91 Main St. On-and Off-Ramp Closures

- Monday, February 13 to Thursday, February 16, nightly, 9 p.m. to 5:30 a.m.

Westbound 91 Lincoln Ave. Off-Ramp Closures

- Saturday, February 11, 10 p.m. to 8:30 a.m.
- Monday, February 13 to Thursday, February 16, nightly, 8 p.m. to 4:30 a.m.

Westbound 91 Main St. On-and Off-Ramp Closures

- Saturday, February 11, 10 p.m. to 8:30 a.m.
- Monday, February 13 to Thursday, February 16, nightly, 8 p.m. to 4:30 a.m.

Westbound 91 Lane Reductions, I-15 to Smith Ave. Overcrossing

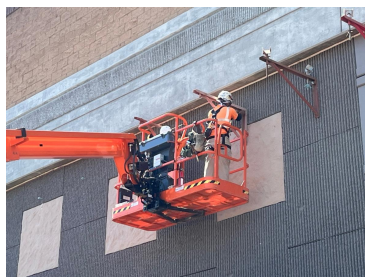
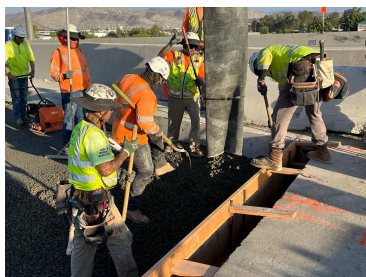
- Saturday, February 11, 10 p.m. to 8:30 a.m.
- Monday, February 13 to Thursday, February 16, nightly, 7:30 p.m. to 4:30 a.m.

Eastbound 91 Express Lanes Closures, County Line to McKinley St.

- Monday, February 13 to Thursday, February 16, nightly, 10 p.m. to 6 a.m.

Westbound 91 Express Lanes Closures, McKinley St. to County Line

- Monday, February 13 to Thursday, February 16, nightly, 10 p.m. to 6 a.m.



Please note that construction activity is subject to change.

ABOUT THE PROJECT

The Riverside County Transportation Commission, in partnership with Caltrans, is delivering the 91 Refresh Project. This project will repave lanes and make repairs to sound walls and associated concrete barriers along the outer portions of eastbound and westbound 91 in Corona. Work will take place along the 91, mainly between the Lincoln Avenue Interchange and Interstate 15, an area with a long history of roadway settlement. Temporary lane shifts, weekend full closures, and lane closures will allow crews to safely complete the repaving and repair work. Most of the work is expected to be completed by early 2023.

NEIGHBORING PROJECT

71/91 Interchange

RCTC is building this new, non-tolled interchange to improve safety, expand access to other modes of travel, reduce greenhouse gas emissions, enhance traffic flow, and support continued movement of native wildlife through the area. Construction is anticipated to be completed in 2025. Stay connected with construction updates by texting 7191INTERCHANGE to 77222 or visiting the project [webpage](#).

STRAIGHT TO YOUR MOBILE DEVICE

Text **91REFRESH**
to **77222**

to sign up for text
message updates



Visit our website

STAY CONNECTED



info@rctc.org



rctc.org/91refresh



951-787-7141



91refresh to 77222



RCTC | 4080 Lemon Street, 3rd Floor, Riverside, CA 92501

[Unsubscribe 15project@rctc.org](mailto:15project@rctc.org)

[Update Profile](#) | [Constant Contact Data Notice](#)

Sent by info@rctc.org powered by



Try email marketing for free today!