



15/91
EXPRESS LANES
CONNECTOR

CONSTRUCTION UPDATE

A Project of the Riverside County Transportation Commission

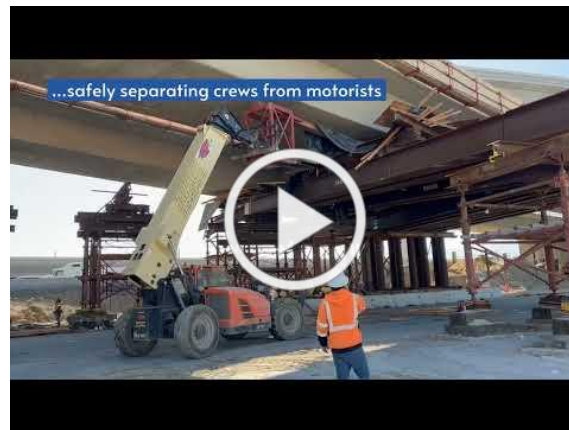


FEBRUARY 24, 2023

Work, Work Work Lots of Progress!

Construction continues on the 15/91 Express Lanes Connector.

Press play to see our crews removing the temporary support structures.



NIGHTLY LANE CLOSURES

Construction activity will require nightly lane reductions and closures, **February 27 to March 4** for roadway work as crews continue building the 15/91 Express Lanes Connector. See details below.

Southbound 15 Express Lanes Closed, Route 60 to Ontario Ave.

- Monday, February 27 and Tuesday, February 28, nightly, 9 p.m. to 5 a.m.

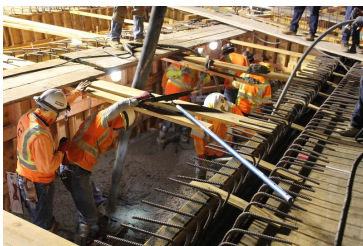
Southbound 15 Lane Reductions, Hidden Valley Parkway to the 91

- Monday, February 27 and Tuesday, February 28, nightly, 9 p.m. to 5 a.m.

Eastbound and Westbound Parkridge Ave. Closures

- Monday, February 27 to Friday, March 4, nightly, 8 p.m. to 5 a.m.

Note: Winter storms may require work to be postponed; please follow @1591Connector for the latest closure updates.



Please note that construction activity is subject to change.

NEIGHBORING PROJECTS

McKinley Street Grade Separation Project

Work is under way on this City of Corona project. For information and construction details, please visit the project [webpage](#) and register for text updates by texting MCKINLEY at 844-518-1409.

71/91 Interchange

RCTC is building this new, non-tolled interchange to improve safety, expand access to other modes of travel, reduce greenhouse gas emissions, enhance traffic flow, and support continued movement of native wildlife through the area. Construction is anticipated to be completed in 2025. Stay connected with construction updates by texting 7191INTERCHANGE to 77222 or visiting the project [webpage](#).

STRAIGHT TO YOUR MOBILE DEVICE

Text **CONNECTOR** to
(844) 771-0995

to sign up for text
message updates



PROJECT OVERVIEW

The Riverside County Transportation Commission, in partnership with Caltrans, is building the 15/91 Express Lanes Connector to link the 15 Express Lanes and the 91 Express Lanes for seamless, reliable travel. New connections will be provided:







- From the eastbound 91 Express Lanes to the northbound 15 Express Lanes and
- From the southbound 15 Express Lanes to the westbound 91 Express Lanes

The project also is extending both the eastbound 91 outside general-purpose lane and the eastern end of the 91 Express Lanes approximately one-half mile east to Promenade Avenue to help with vehicle merging in this area. Construction began in April 2021 and the connector is expected to open in 2023.



Visit our website

STAY CONNECTED

[@1591Connector](#) | rctc.org/15-91connector | (844) 415-9777 | (844) 771-0995

RCTC- 15/91 Express Lanes Connector | 4080 Lemon Street, 3rd Floor, Riverside, CA 92501

[Unsubscribe 15project@rctc.org](mailto:Unsubscribe_15project@rctc.org)

[Update Profile](#) | [Constant Contact Data Notice](#)

Sent by 15-91connector@rctc.org powered by



Try email marketing for free today!