



NEWS RELEASE

Date January 17, 2023
Contact Aaron Hake
Deputy Executive Director
951.212.3636 Cell 951.787.7141 Office
ahake@rctc.org

For immediate release

Plan Ahead for Full Closure of Westbound 91 in Corona, Weekend of January 27-30

Motorists should steer clear of westbound 91 in Corona or be prepared for heavy traffic delays, due to a weekend closure of all lanes on westbound 91 from Interstate 15 to Lincoln Avenue, Friday, January 27 at 10 p.m. to Monday, January 30 at 5 a.m.

The full closure is needed for crews to perform work on two adjacent projects led by the Riverside County Transportation Commission (RCTC), the [15/91 Express Lanes Connector](#) and the [91 Refresh Project](#). Work is being combined into one weekend closure for both projects to reduce the impact to drivers, residents, and businesses.

During the weekend, crews for the 15/91 Express Lanes Connector will be removing the overhead support structures placed a year ago above the 91 to build the connector. At the same time, the 91 Refresh crews will continue repaving lanes on westbound 91, an area with a long history of roadway settlement between I-15 and Lincoln Avenue.

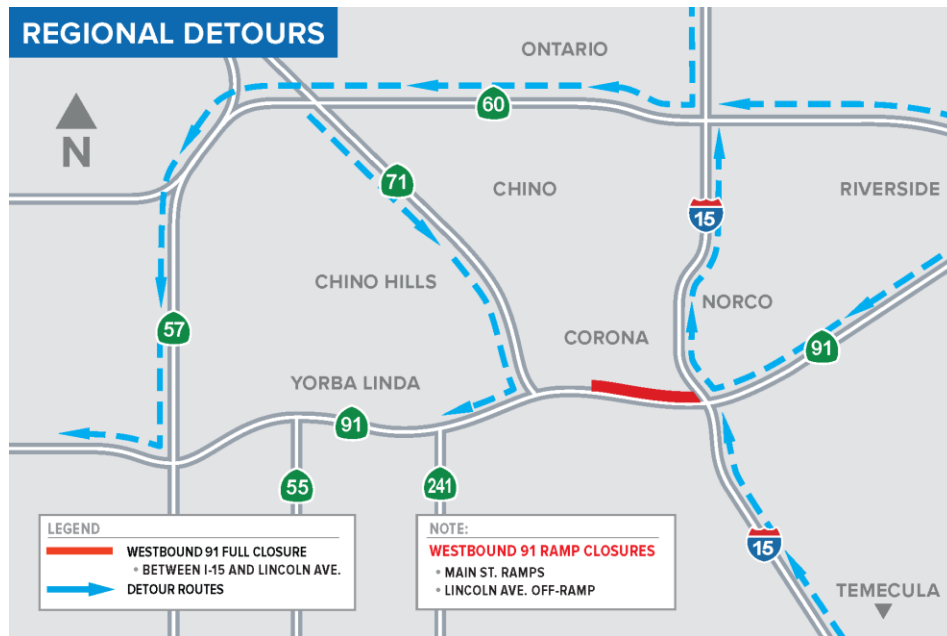
All westbound 91 lanes in this area will be closed including the westbound 91 Express Lanes in Riverside County. The westbound 91 Main Street on-ramp and off-ramp, the westbound 91 Lincoln Avenue off-ramp, and the westbound 91 connectors from Interstate 15 will also be closed.

To reduce time stuck in traffic, drivers should steer clear of the closure area and use westbound Route 60 to southbound Route 71 or 57 as alternate routes. See regional detour map below. Travelers also are advised to use Metrolink passenger rail as a travel alternative. Please visit metrolinktrains.com for schedules, fares, and other information.

--- MORE ---

Weekend Full Closure of Westbound 91 in Corona, January 27-30

Page 2 of 2



Residents should expect traffic congestion on streets near the 91 and allow significant extra time to reach area businesses, which will be open during the weekend. Fire, police, and ambulance services will have access for emergency response.

Drivers who need to reach Main Street in Corona should plan for delays and use the detours provided:

- From westbound 91, head north on I-15, exit at Hidden Valley Parkway, and head west to Main Street.
- From northbound I-15, exit at Magnolia Avenue, head northeast on Magnolia, and then west on Sixth Street to Main Street.
- From southbound I-15, exit at Hidden Valley Parkway, and head west to Main Street.
- The westbound 91 Main Street ramps will be closed, so local traffic can use River Road or Railroad Street to Lincoln Avenue to enter westbound 91. Traffic likely will be heavy. On-ramps at Maple Street and Auto Center Drive are other options for westbound travel.

Construction activity is subject to change due to weather or other factors. If planned work cannot be completed the weekend of January 27-30, it will be rescheduled as soon as possible.

Both projects are partnerships between RCTC and Caltrans. The 15/91 Express Lanes Connector is expected to open in late 2023. The 91 Refresh work is anticipated to be completed this spring.

To register for construction updates, text CONNECTOR to 844-771-0995 and text 91REFRESH to 77222.

###