



91 REFRESH PROJECT

CONSTRUCTION UPDATE

A Project of the Riverside County Transportation Commission



JANUARY 13, 2023

CONNECTOR, LANE AND RAMP CLOSURES

Construction of the 91 Refresh project in Corona is continuing this week, requiring nighttime lane reductions and closures of connectors and ramps, **January 18-21, weather permitting**. Please note - there are no scheduled closures Friday, January 13 through Monday, January 16 in observance of the Martin Luther King Jr. holiday. See details below.

Northbound 15 to Westbound 91 Connector Closure

- Friday, January 20, 10 p.m. to 6:30 a.m.
- Saturday, January 21, 11 p.m. to 8 a.m.

Southbound 15 to Westbound 91 Connector Closure

- Friday, January 20, 10 p.m. to 6:30 a.m.
- Saturday, January 21, 11 p.m. to 8 a.m.

Westbound 91 Main St. On-Ramp Closure

- Tuesday, January 17, 8 p.m. to 4:30 a.m.

Westbound 91 Main St. On- and Off-Ramp Closure

- Friday, January 20, 8 p.m. to 7:30 a.m.
- Saturday, January 21, 10 p.m. to 8:30 a.m.

Westbound 91 Lincoln Ave. Off-Ramp Closure

- Tuesday, January 17, 8 p.m. to 4:30 a.m.
- Friday, January 20, 8 p.m. to 7:30 a.m.
- Saturday, January 21, 10 p.m. to 8:30 a.m.

Westbound 91 Lane Reductions, I-15 to Smith Avenue Overcrossing

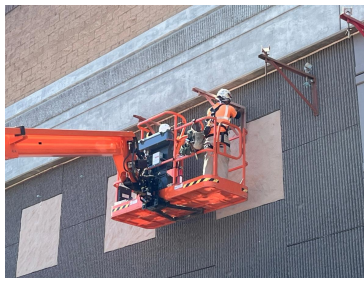
- Tuesday, January 17, 7:30 p.m. to 4:30 a.m.
- Friday, January 20, 8 p.m. to 7:30 a.m.
- Saturday, January 21, 10 p.m. to 8:30 a.m.



PLAN AHEAD

A weekend full closure of westbound 91 between Interstate 15 and Lincoln Avenue in Corona is scheduled for **January 27-30, 2023**. Stay informed of upcoming closures by texting 91REFRESH to 77222 or following @theRCTC on social media.

See the details and detour maps [here](#).



Please note that construction activity is subject to change.

ABOUT THE PROJECT

The Riverside County Transportation Commission, in partnership with Caltrans, is delivering the 91 Refresh Project. This project will repave lanes and make repairs to sound walls and associated concrete barriers along the outer portions of eastbound and westbound 91 in Corona. Work will take place along the 91, mainly between the Lincoln Avenue Interchange and Interstate 15, an area with a long history of roadway settlement. Temporary lane shifts, weekend full closures, and lane closures will allow crews to safely complete the repaving and repair work. Most of the work is expected to be completed by early 2023.

STRAIGHT TO YOUR MOBILE DEVICE

Text **91REFRESH**
to **77222**

to sign up for text
message updates



Visit our website

STAY CONNECTED



info@rctc.org



rctc.org/91refresh



951-787-7141



91refresh to 77222



RCTC | 4080 Lemon Street, 3rd Floor, Riverside, CA 92501

[Unsubscribe 15project@rctc.org](mailto:15project@rctc.org)

[Update Profile](#) | [Constant Contact Data Notice](#)

Sent by info@rctc.org powered by



Try email marketing for free today!