



CONSTRUCTION UPDATE

A Project of the Riverside County Transportation Commission

JANUARY 30, 2023

LANE, CONNECTOR, AND RAMP CLOSURES

Construction activity will require nightly lane, connector, and ramp closures and lane reductions **January 30 - February 3** for bridge and roadway work as crews continue building the 15/91 Express Lanes Connector. See details below.

Southbound 15 Lane Reductions, Hidden Valley Parkway to the 91

- Wednesday, February 1 and Thursday, February 2, nightly, 9 p.m. to 5 a.m.
- Friday, February 3, 9 p.m. to 6 a.m.

Eastbound 91 Lane Reductions, Main St. to McKinley St.

- Monday, January 30 through Wednesday, February 1, nightly, 9 p.m. to 6 a.m.

Eastbound 91 Express Lanes Closures, County Line to McKinley St.

- Monday, January 30 through Wednesday, February 1, nightly, 10 p.m. to 6 a.m.

Eastbound 91 Main St. Off-Ramp Closures

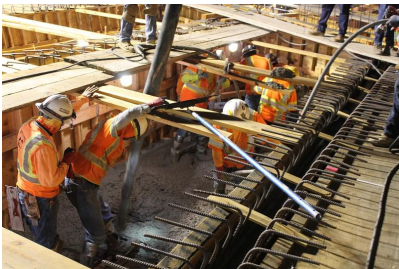
- Monday, January 30 through Wednesday, February 1, nightly, 9 p.m. to 6 a.m.

Westbound 91 Lane Reductions, I-15. to Main St.

- Monday, January 30 through Wednesday, February 1, nightly, midnight to 4 a.m.

Westbound 91 Lane Reductions, McKinley St. to Main St.

- Monday, January 30 through Thursday, February 2, nightly, 8 p.m. to 5 a.m.
- Friday, February 3, 10 p.m. to 6 a.m.



Please note that construction activity is subject to change.

NEIGHBORING PROJECTS

McKinley Street Grade Separation Project

Work is under way on this City of Corona project. For information and construction details, please visit the project [webpage](#) and register for text updates by texting MCKINLEY at 844-518-1409.

STRAIGHT TO YOUR MOBILE DEVICE

Text **CONNECTOR** to **(844) 771-0995**

to sign up for text message updates



PROJECT OVERVIEW

The Riverside County Transportation Commission, in partnership with Caltrans, is building the 15/91 Express Lanes Connector to link the 15 Express Lanes and the 91 Express Lanes for seamless, reliable travel. New connections will be provided:

- From the eastbound 91 Express Lanes to the northbound 15 Express Lanes and
- From the southbound 15 Express Lanes to the westbound 91 Express Lanes

The project also is extending both the eastbound 91 outside general-purpose lane and the eastern end of the 91 Express Lanes approximately one-half mile east to Promenade Avenue to help with vehicle merging in this area. Construction began in April 2021 and the connector is expected to open in 2023.



[Visit our website](#)

STAY CONNECTED



@1591Connector



rctc.org/15-91connector



(844) 415-9777



(844) 771-0995

RCTC- 15/91 Express Lanes Connector | 4080 Lemon Street, 3rd Floor, Riverside, CA 92501

[Unsubscribe 15project@rctc.org](mailto:Unsubscribe_15project@rctc.org)

[Update Profile](#) | [Constant Contact Data Notice](#)

Sent by 15-91connector@rctc.org powered by



Try email marketing for free today!