



15/91
EXPRESS LANES
CONNECTOR

CONSTRUCTION UPDATE

A Project of the Riverside County Transportation Commission



JANUARY 13, 2023

CONNECTOR CLOSURES AND LANE REDUCTIONS

Construction activity will require nightly lane reductions and connector closures **January 17-20** for bridge and roadway work as crews continue building the 15/91 Express Lanes Connector. Please note - there are **no scheduled closures for Friday, Jan. 13 through Monday, January 16 in observance of the Martin Luther King Jr. holiday**. See details below.

Southbound 15 to Westbound 91 Connector Closure

- Tuesday, January 17, 8 p.m. to 5 a.m.
- Thursday, January 19, 8 p.m. to 5 a.m.

Westbound 91 Lane Reductions, McKinley St. to Main St.

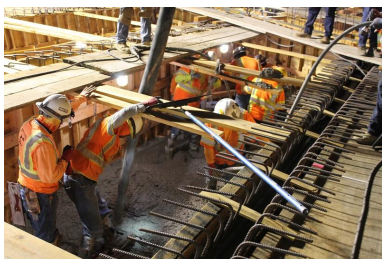
- Tuesday, January 17 through Thursday, January 19, nightly, 8 p.m. to 5 a.m.
- Friday, January 20, 10 p.m. to 6 a.m.



PLAN AHEAD

A weekend full closure of westbound 91 between Interstate 15 and Lincoln Avenue in Corona is scheduled for **January 27-30, 2023, weather permitting**. Stay informed by texting CONNECTOR to (844) 771-0995 or following @1591connector on social media.

See the details and detour maps [here](#).



Please note that construction activity is subject to change.

NEIGHBORING PROJECTS

McKinley Street Grade Separation Project

Work is under way on this City of Corona project. For information and construction details, please visit the project [webpage](#) and register for text updates by texting MCKINLEY at 844-518-1409.

STRAIGHT TO YOUR MOBILE DEVICE

Text **CONNECTOR** to
(844) 771-0995

to sign up for text
message updates



PROJECT OVERVIEW

The Riverside County Transportation Commission, in partnership with Caltrans, is building the 15/91 Express Lanes Connector to link the 15 Express Lanes and the 91 Express Lanes for seamless, reliable travel. New connections will be provided:







- From the eastbound 91 Express Lanes to the northbound 15 Express Lanes and
- From the southbound 15 Express Lanes to the westbound 91 Express Lanes

The project also is extending both the eastbound 91 outside general-purpose lane and the eastern end of the 91 Express Lanes approximately one-half mile east to Promenade Avenue to help with vehicle merging in this area. Construction began in April 2021 and the connector is expected to open in 2023.



Visit our website

STAY CONNECTED

[@1591Connector](#) |
 rctc.org/15-91connector |
 (844) 415-9777 |
 (844) 771-0995

RCTC- 15/91 Express Lanes Connector | 4080 Lemon Street, 3rd Floor, Riverside, CA 92501

[Unsubscribe 15project@rctc.org](mailto:Unsubscribe_15project@rctc.org)

[Update Profile](#) | [Constant Contact Data Notice](#)

Sent by 15-91connector@rctc.org powered by

