



CONSTRUCTION UPDATE

A Project of the Riverside County Transportation Commission



JANUARY 20, 2023

LANE, CONNECTOR AND RAMP CLOSURES

Construction activity will require nightly lane, ramp and connector closures and reductions **January 23-30** for bridge and roadway work as crews continue building the 15/91 Express Lanes Connector. See details below.

Northbound 15 to Eastbound 91 Connector Closure

- Monday, January 23 through Wednesday, January 25, nightly, 8 p.m. to 4 a.m.

Northbound 15 to Westbound 91 Connector Closures

- Friday, January 27, 10 p.m. to Monday, January 30, 5 a.m.

Southbound 15 to Eastbound 91 Connector Closure

- Monday, January 23, through Wednesday, January 25, nightly, 9 p.m. to 5 a.m.

Southbound 15 to Westbound 91 Connector Closure

- Friday, January 27, 10 p.m. to Monday, January 30, 5 a.m.

Eastbound 91 Lane Reductions, I-15 to McKinley St.

- Friday, January 27, 10 p.m. to 6 a.m.

Eastbound 91 Lane Reductions, Main St. to McKinley St.

- Monday, January 23 through Wednesday, January 25, nightly, 9 p.m. to 6 a.m.

Eastbound 91 Main St. On-Ramp Closure

- Monday, January 23 through Wednesday, January 25, nightly, 9 p.m. to 6 a.m.

Westbound 91 Lane Reductions, I-15. to Main St.

- Monday, January 23 and Tuesday, January 24, nightly, midnight to 4 a.m.

Westbound 91 Lane Reductions, McKinley St. to Main St.

- Monday, January 23 through Thursday, January 26, nightly, 8 p.m. to 5 a.m.

Westbound 91 Main St. On-and Off-Ramp Closures

- Friday, January 27, 10 p.m. to Monday, January 30, 5 a.m.

Westbound 91 Lincoln Ave. Off-Ramp Closures

- Friday, January 27, 10 p.m. to Monday, January 30, 5 a.m.

Westbound 91 Lane Closures, I-15 to Lincoln Ave.

- Friday, January 27, 10 p.m. to Monday, January 30, 5 a.m.

Westbound 91 Express Lanes Closures, McKinley St. to County Line

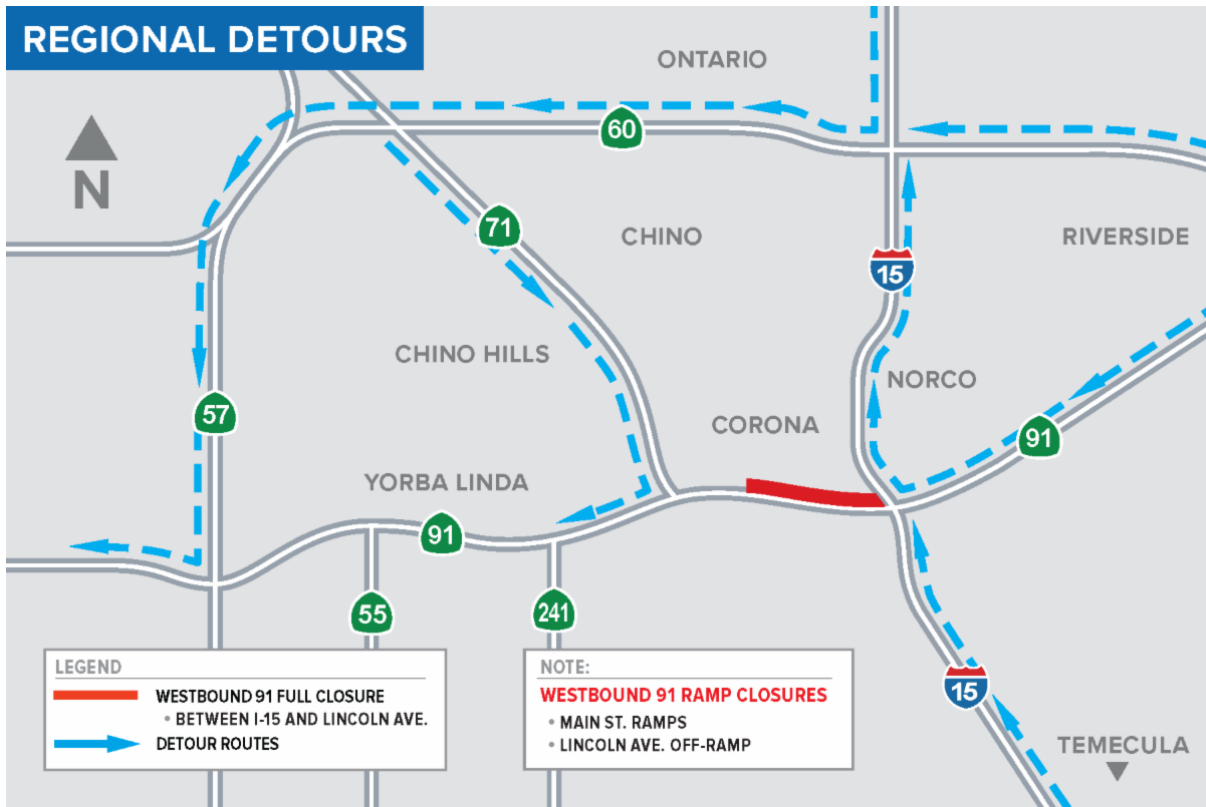
- Monday, January 23, through Wednesday, January 25, nightly, 8 p.m. to 4 a.m.
- Friday, January 27, 10 p.m. to Monday, January 30, 5 a.m.



PLAN AHEAD

A weekend full closure of westbound 91 between Interstate 15 and Lincoln Avenue in Corona is scheduled for **January 27-30, 2023, weather permitting**. Stay informed by texting CONNECTOR to (844) 771-0995 or following @1591connector on social media. See the details [here](#).

REGIONAL DETOURS



Please note that construction activity is subject to change.

NEIGHBORING PROJECTS

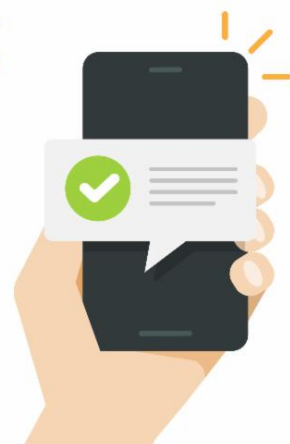
McKinley Street Grade Separation Project

Work is under way on this City of Corona project. For information and construction details, please visit the project [webpage](#) and register for text updates by texting MCKINLEY at 844-518-1409.

STRAIGHT TO YOUR MOBILE DEVICE

Text **CONNECTOR** to
(844) 771-0995

to sign up for text
message updates



PROJECT OVERVIEW

The Riverside County Transportation Commission, in partnership with Caltrans, is building the 15/91 Express Lanes Connector to link the 15 Express Lanes and the 91 Express Lanes for seamless, reliable travel. New connections will be provided:

- From the eastbound 91 Express Lanes to the northbound 15 Express Lanes and
- From the southbound 15 Express Lanes to the westbound 91 Express Lanes

The project also is extending both the eastbound 91 outside general-purpose lane and the eastern end of the 91 Express Lanes approximately one-half mile east to Promenade Avenue to help with vehicle merging in this area. Construction began in April 2021 and the connector is expected to open in 2023.



Visit our website

STAY CONNECTED



@1591Connector



rctc.org/15-91connector



(844) 415-9777



(844) 771-0995

RCTC- 15/91 Express Lanes Connector | 4080 Lemon Street, 3rd Floor, Riverside, CA 92501

Unsubscribe 15project@rctc.org

[Update Profile](#) | [Constant Contact Data Notice](#)

Sent by 15-91connector@rctc.org powered by



Try email marketing for free today!