



NEWS RELEASE

Date December 6, 2022

Contact Aaron Hake
Deputy Executive Director
951.212.3636 Cell 951.787.7141 Office
ahake@rctc.org

For immediate release

Westbound 91 in Corona to be Fully Closed Weekend of December 9-12

Motorists heading west through Corona for holiday gatherings or shopping should avoid the area or allow extra time behind the wheel, due to a weekend full closure of all lanes on westbound 91 from Interstate 15 to Lincoln Avenue, Friday, December 9 at 10 p.m. to Monday, December 12 at 4 a.m.

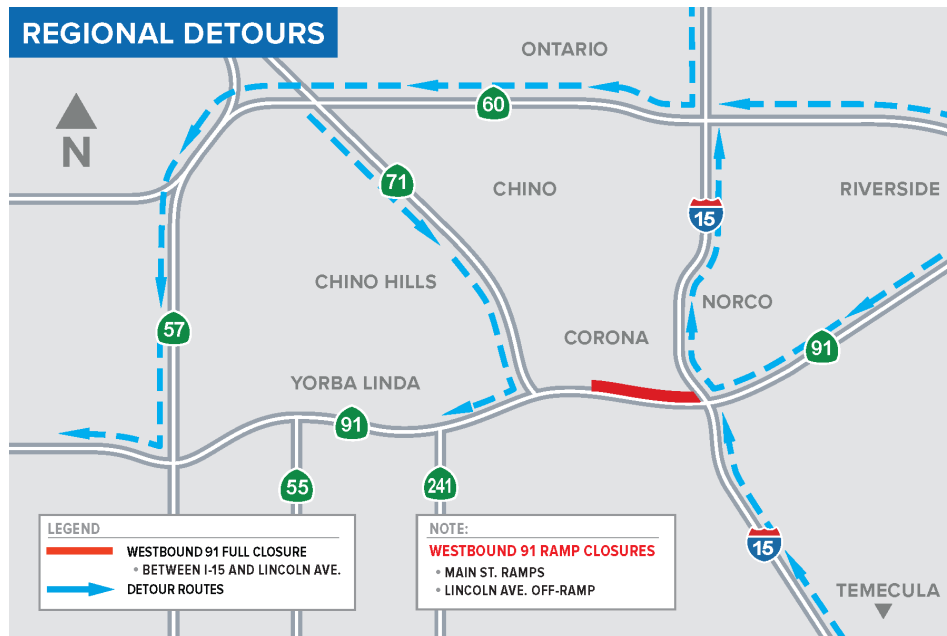
Crews for the Riverside County Transportation Commission's [91 Refresh Project](#) will continue their repaving work, which requires the closure of all westbound 91 lanes in this area including the westbound 91 Express Lanes in Riverside County, the westbound 91 Main Street on-ramp and off-ramp, and the westbound 91 Lincoln Avenue off-ramp. Interstate 15 will remain open, but the westbound 91 connectors from I-15 will be closed.

Motorists should steer clear of this area by using westbound Route 60 to southbound Route 71 or 57 as alternate routes. Those who need to access Main Street in Corona should plan for delays and use the detours noted below.

- From westbound 91, head north on I-15, exit at Hidden Valley Parkway, and head west to Main Street.
- From northbound I-15, exit at Magnolia Avenue, head northeast on Magnolia, and then west on Sixth Street to Main Street.
- From southbound I-15, exit at Hidden Valley Parkway, and head west to Main Street.
- The westbound 91 Main Street ramps will be closed, so motorists should follow detour signs to enter the 91 at Lincoln Avenue. Traffic likely will be heavy.

-- MORE --

Weekend Full Closure of Westbound 91 in Corona, December 9-12
Page 2 of 2



Motorists also are advised to use Metrolink passenger rail as a travel alternative. Please visit metrolinktrains.com for schedules, fares, and other information.

Construction activity is subject to change due to weather or other factors. If the repaving cannot be completed this weekend, it will be rescheduled as soon as possible.

The 91 Refresh Project is a partnership between RCTC and Caltrans to repave lanes and repair sound walls and concrete barriers along the outer portions of eastbound and westbound 91 in Corona. Work will occur mainly between the Lincoln Avenue interchange and Interstate 15, an area with a long history of roadway settlement.

To register for construction updates, text 91REFRESH to 77222 or visit rctc.org/91refresh.

###