



**91 REFRESH  
PROJECT**

## **CONSTRUCTION UPDATE**

A Project of the Riverside County Transportation Commission



**DECEMBER 13, 2022**

### **LANE AND RAMP CLOSURES**

Construction of the 91 Refresh project in Corona is continuing this week, requiring nighttime lane and ramp closures **December 13-16**. Please see details below.

#### **Northbound 15 to Westbound 91 Connector Closures**

- Tuesday, December 13, through Thursday, December 15, nightly, 8 p.m. to 4:30 a.m.
- Friday, December 16, 10 p.m. to 6:30 a.m.

#### **Southbound 15 to Westbound 91 Connector Closures**

- Tuesday, December 13, through Thursday, December 15, nightly, 8 p.m. to 4:30 a.m.

#### **Westbound 91 Main St. On- and Off-Ramp Closures**

- Tuesday, December 13, through Thursday, December 15, nightly, 8 p.m. to 4:30 a.m.
- Friday, December 16, 8 p.m. to 7:30 a.m.

#### **Westbound 91 Lincoln Ave. Off-Ramp Closures**

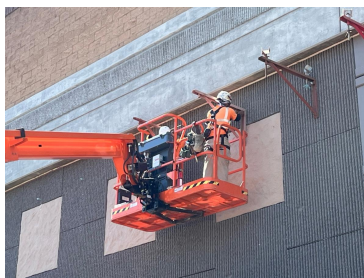
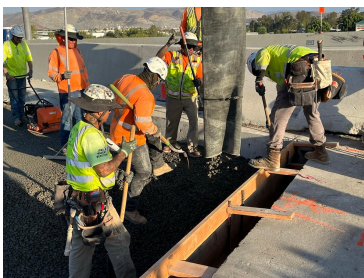
- Tuesday, December 13, through Thursday, December 15, nightly, 8 p.m. to 4:30 a.m.
- Friday, December 16, 8 p.m. to 7:30 a.m.

#### **Westbound 91 Lane Reductions, I-15 to Smith Avenue Overcrossing**

- Tuesday, December 13, through Thursday, December 15, nightly, 7:30 p.m. to 4:30 a.m.
- Friday, December 16, 8 p.m. to 7:30 a.m.

#### **Westbound 91 Express Lanes Closures, McKinley St. to County Line**

- Tuesday, December 13, through Thursday, December 15, nightly, 8 p.m. to 4 a.m.
- Friday, December 16, 10 p.m. to 7 a.m.



*Please note that construction activity is subject to change.*

## ABOUT THE PROJECT

The Riverside County Transportation Commission, in partnership with Caltrans, is delivering the 91 Refresh Project. This project will repave lanes and make repairs to sound walls and associated concrete barriers along the outer portions of eastbound and westbound 91 in Corona. Work will take place along the 91, mainly between the Lincoln Avenue Interchange and Interstate 15, an area with a long history of roadway settlement. Temporary lane shifts, weekend full closures, and lane closures will allow crews to safely complete the repaving and repair work. Most of the work is expected to be completed by the end of 2022.

## STRAIGHT TO YOUR MOBILE DEVICE

Text **91REFRESH**  
to **77222**

to sign up for text  
message updates



Visit our website

## STAY CONNECTED



[info@rctc.org](mailto:info@rctc.org)



[rctc.org/91refresh](http://rctc.org/91refresh)



951-787-7141



91refresh to 77222



RCTC | 4080 Lemon Street, 3rd Floor, Riverside, CA 92501

[Unsubscribe 15project@rctc.org](mailto:15project@rctc.org)

[Update Profile](#) | [Constant Contact Data Notice](#)

Sent by [info@rctc.org](mailto:info@rctc.org) powered by



Try email marketing for free today!