



**91 REFRESH  
PROJECT**

## **CONSTRUCTION UPDATE**

A Project of the Riverside County Transportation Commission



**DECEMBER 2, 2022**

### **LANE AND RAMP CLOSURES**

Construction of the 91 Refresh project in Corona is continuing this week, requiring nighttime lane and ramp closures **December 5-12**. Please see details below.

#### **Northbound 15 to Westbound 91 Connector Closures**

- Monday, December 5, 8 p.m. to 4:30 a.m.
- Thursday, December 8, 8 p.m. to 4:30 a.m.
- Friday, December 9, 10 p.m. to Monday, December 12, 4 a.m.

#### **Southbound 15 to Westbound 91 Connector Closures**

- Monday, December 5, 8 p.m. to 4:30 a.m.
- Thursday, December 8, 8 p.m. to 4:30 a.m.
- Friday, December 9, 10 p.m. to Monday, December 12, 4 a.m.

#### **Westbound 91 Main St. On-Ramp Closures**

- Monday, December 5, through Wednesday, December 7, nightly, 8 p.m. to 4:30 a.m.

#### **Westbound 91 Main St. On-and Off-Ramp Closures**

- Thursday, December 8, 8 p.m. to 4:30 a.m.
- Friday, December 9, 8 p.m. to Monday, December 12, 4 a.m.

#### **Westbound 91 Lincoln Ave. Off-Ramp Closures**

- Monday, December 5 through Thursday, December 8, nightly, 8 p.m. to 4:30 a.m.
- Friday, December 8 p.m. to Monday, December 12, 4 a.m.

#### **Westbound 91 Lane Reductions, I-15 to Smith Avenue Overcrossing**

- Monday, December 5 through Thursday, December 8, nightly, 7:30 p.m. to 4:30 a.m.
- Friday, December 9, 10 p.m. to Monday, December 12, 4 a.m.

#### **Eastbound 91 Lane Reductions, Lincoln Avenue to McKinley St.**

- Monday, December 5, through Friday, December 9, nightly, 9 p.m. to 6 a.m.
- Saturday, December 10, 11 p.m. to 9 a.m.
- Sunday, December 11, 9:30 p.m. to 5:30 a.m.

#### **Eastbound 91 Lincoln Ave. On-Ramp Closures**

- Monday, December 5 through Friday, December 9, nightly, 9 p.m. to 5:30 a.m.
- Saturday, December 10, 11 p.m. to 9 a.m.
- Sunday, December 11, 9:30 p.m. to 5:30 a.m.

#### **Eastbound 91 Main St. On-and Off-Ramp Closures**

- Monday, December 5, through Friday, December 9, nightly, 9 p.m. to 5:30 a.m.
- Saturday, December 10, 11 p.m. to 9 a.m.
- Sunday, December 11, 9:30 a.m. to 5:30 a.m.

#### **Westbound 91 Express Lanes Closures, McKinley St. to County Line**

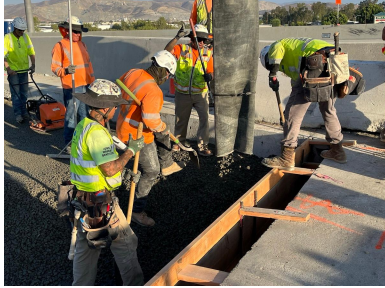
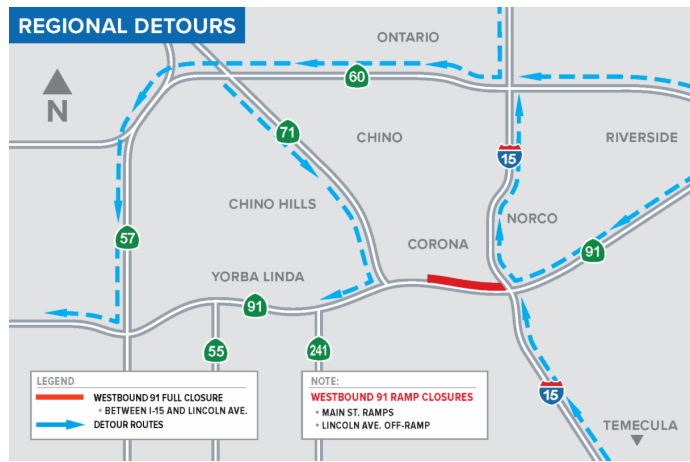
- Monday, December 5 through Thursday, December 8, nightly, 8 p.m. to 4 a.m.
- Friday, December 9, 10 p.m. to Monday, December 12, 4 a.m.

#### **Eastbound 91 Express Lanes Closures, County Line to McKinley St.**

- Monday, December 5 and Tuesday, December 6, nightly, 10 p.m. to 6 a.m.
- Wednesday, December 7, 10 p.m. to 4 a.m.
- Thursday, December 8, 10 p.m. to 6 a.m.
- Friday, December 9, 11 p.m. to 7 a.m.
- Saturday, December 10, 11 p.m. to 7 a.m.
- Sunday, December 11, 10 p.m. to 6 a.m.

## ⚠️ UPCOMING WEEKEND FULL CLOSURE - ALL LANES WESTBOUND 91

Paving work for the 91 Refresh project will require a weekend full closure of all westbound 91 lanes in Corona, Friday, December 9 to Monday, December 12. Please watch for details.



*Please note that construction activity is subject to change.*

## ABOUT THE PROJECT

The Riverside County Transportation Commission, in partnership with Caltrans, is delivering the 91 Refresh Project. This project will repave lanes and make repairs to sound walls and associated concrete barriers along the outer portions of eastbound and westbound 91 in Corona. Work will take place along the 91, mainly between the Lincoln Avenue Interchange and Interstate 15, an area with a long history of roadway settlement. Temporary lane shifts, weekend full closures, and lane closures will allow crews to safely complete the repaving and repair work. The project is expected to be completed by the end of 2022.

## STRAIGHT TO YOUR MOBILE DEVICE

Text **91REFRESH**  
to **77222**

to sign up for text  
message updates



Visit our website

## STAY CONNECTED



info@rctc.org



rctc.org/91refresh



951-787-7141



91refresh to 77222



RCTC | 4080 Lemon Street, 3rd Floor, Riverside, CA 92501

[Unsubscribe 15project@rctc.org](mailto:15project@rctc.org)

[Update Profile](#) | [Constant Contact Data Notice](#)

Sent by [info@rctc.org](mailto:info@rctc.org) powered by



Try email marketing for free today!