



CONSTRUCTION UPDATE

A Project of the Riverside County Transportation Commission



DECEMBER 12, 2022

LANE AND RAMP CLOSURES

Construction activity requires nightly lane and ramp closures **December 12-16** for bridge and roadway work as crews continue building the 15/91 Express Lanes Connector. Please see details below.

Southbound 15 to Westbound 91 Connector Closure

- Wednesday, December 14, 8 p.m. to 5 a.m.

Southbound 15 to Eastbound 91 Connector Closure

- Monday, December 12, 9 p.m. to 5 a.m.
- Friday, December 16, 9 p.m. to 6 a.m.

Westbound 91 Lane Reductions, McKinley St. to Main St.

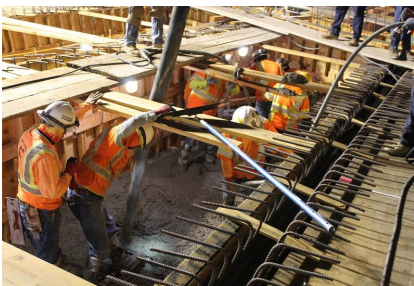
- Monday, December 12, through Thursday, December 15, nightly, 8 p.m. to 4 a.m.
- Friday, December 16, 10 p.m. to 6 a.m.

Eastbound 91 Lane Reductions, Main St. to McKinley St.

- Friday, December 16, 10 p.m. to 6 a.m.

Eastbound 91 Main St. On-Ramp Closure

- Monday, December 12, 9 p.m. to 6 a.m.
- Friday, December 16, 10 p.m. to 8 a.m.



Please note that construction activity is subject to change.

McKinley Street Grade Separation Project

Work is under way on this City of Corona project. For information and construction details, please visit the project [webpage](#) and register for text updates by texting MCKINLEY at 844-518-1409.

STRAIGHT TO YOUR MOBILE DEVICE

Text **CONNECTOR** to **(844) 771-0995**

to sign up for text message updates



PROJECT OVERVIEW

The Riverside County Transportation Commission, in partnership with Caltrans, is building the 15/91 Express Lanes Connector to link the 15 Express Lanes and the 91 Express Lanes for seamless, reliable travel. New connections will be provided:





- From the eastbound 91 Express Lanes to the northbound 15 Express Lanes and
- From the southbound 15 Express Lanes to the westbound 91 Express Lanes

The project also is extending both the eastbound 91 outside general-purpose lane and the eastern end of the 91 Express Lanes approximately one-half mile east to Promenade Avenue to help with vehicle merging in this area. Construction began in April 2021 and the connector is expected to open in 2023.



[Visit our website](#)

STAY CONNECTED

 <p>@1591Connector</p>	 <p>rctc.org/15-91connector</p>	 <p>(844) 415-9777</p>	 <p>(844) 771-0995</p>
---	---	--	---

RCTC- 15/91 Express Lanes Connector | 4080 Lemon Street, 3rd Floor, Riverside, CA 92501

[Unsubscribe 15project@rctc.org](mailto:Unsubscribe_15project@rctc.org)

[Update Profile](#) | [Constant Contact Data Notice](#)

Sent by 15-91connector@rctc.org powered by



Try email marketing for free today!