



## 91 REFRESH PROJECT

### CONSTRUCTION UPDATE

A Project of the Riverside County Transportation Commission



NOVEMBER 18, 2022



### CLOSURES AND LANE REDUCTIONS CONTINUE: WESTBOUND 91 AND MAIN STREET RAMPS

Full closures of westbound 91 Main Street on-ramp and off-ramp, lane reductions on westbound 91 and lane reductions on the northbound I-15 to westbound 91 connector in Corona are needed for crews to safely repave lanes in this area. During the closures and lane reductions, the eastbound and westbound 91 general purpose lanes and 91 Express Lanes will remain open.

The extended closures will continue **through Monday, Nov. 21 at 4 a.m.**, for crews to continue safely repaving lanes. Please avoid the area. This extended closure period will help reduce the number of remaining weekend full closures required for the RCTC 91 Refresh Project.

Please see detour map below and allow extra travel time due to anticipated delays. Visit [rctc.org/91-refresh-closures](https://rctc.org/91-refresh-closures) for more information.



## LANE AND RAMP CLOSURES

In addition to the westbound 91 lane reductions and Main St. ramp closures noted above, work is planned **November 18-22**. Please see details below.

### Northbound 15 to Westbound 91 Connector Closures

- Friday, Nov. 18, 8 p.m. to 4:30 a.m.
- Saturday, Nov. 19, 11 p.m. to 8 a.m.
- Sunday, Nov. 20, 10 p.m. to 4:30 a.m.
- Monday, Nov. 21, 8 p.m. to 4:30 a.m.

### Southbound 15 to Westbound 91 Connector Closures

- Friday, Nov. 18, 8 p.m. to 4:30 a.m.
- Saturday, Nov. 19, 11 p.m. to 8 a.m.
- Sunday, Nov. 20, 10 p.m. to 4:30 a.m.
- Monday, Nov. 21, 8 p.m. to 4:30 a.m.

### Westbound 91 Lincoln Ave. Off-Ramp Closures

- Friday, Nov. 18, 8 p.m. to 7:30 a.m.
- Saturday, Nov. 19, 10 p.m. to 8:30 a.m.
- Sunday, Nov. 20, 9 p.m. to 4:30 a.m.
- Monday, Nov. 21, and Tuesday, Nov. 22, nightly, 8 p.m. to 4:30 a.m.

### Westbound 91 Lane Reductions, McKinley St. to Main St.

- Sunday, November 20, 10 p.m. to 4 a.m.

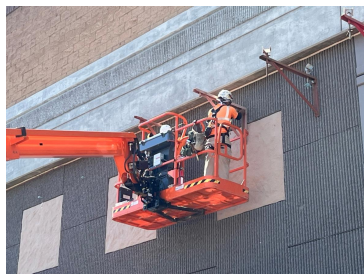
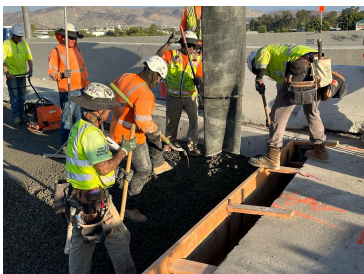
### Westbound 91 Lane Reductions, McKinley St. to Smith Avenue Overcrossing

- Sunday, November 20, 9 p.m. to 4:30 a.m.

### Westbound 91 Lane Reductions, I-15 to Smith Avenue Overcrossing

- Friday, November 18, 8 p.m. to 7:30 a.m.
- Saturday, November 19, 10 p.m. to 8:30 a.m.
- Monday, November 21 and Tuesday, November 22, nightly, 7:30 p.m. to 4:30 a.m.

**There will be no construction activity beginning Wednesday, Nov. 23 through Sunday, Nov. 27 due to the Thanksgiving holiday.**



## ABOUT THE PROJECT

The Riverside County Transportation Commission, in partnership with Caltrans, is delivering the 91 Refresh Project. This project will repave lanes and make repairs to sound walls and associated concrete barriers along the outer portions of eastbound and westbound 91 in Corona. Work will take place along the 91, mainly between the Lincoln Avenue Interchange and Interstate 15, an area with a long history of roadway settlement. Temporary lane shifts, weekend full closures, and lane closures will allow crews to safely complete the repaving and repair work. The project is expected to be completed by the end of 2022.

## STRAIGHT TO YOUR MOBILE DEVICE

Text **91REFRESH**  
to **77222**

to sign up for text  
message updates



Visit our website

## STAY CONNECTED



[info@rctc.org](mailto:info@rctc.org)



[rctc.org/91refresh](http://rctc.org/91refresh)



951-787-7141



91refresh to 77222



RCTC | 4080 Lemon Street, 3rd Floor, Riverside, CA 92501

[Unsubscribe 15project@rctc.org](mailto:Unsubscribe_15project@rctc.org)

[Update Profile](#) | [Constant Contact Data Notice](#)

Sent by [info@rctc.org](mailto:info@rctc.org) powered by



Try email marketing for free today!