



91 REFRESH PROJECT

CONSTRUCTION UPDATE

A Project of the Riverside County Transportation Commission



NOVEMBER 10, 2022



CLOSURES AND LANE REDUCTIONS AHEAD: WESTBOUND 91 AND MAIN STREET RAMPS

Full closures of westbound 91 Main Street on-ramp and off-ramp, lane reductions on westbound 91 and lane reductions on the northbound I-15 to westbound 91 connector in Corona are needed for crews to safely repave lanes in this area. During the closures and lane reductions, the eastbound and westbound 91 general purpose lanes and 91 Express Lanes will remain open.

The extended closures will take **Saturday, Nov. 12 at 10 p.m. through Monday, Nov. 21 at 4 a.m.**, for crews to continue safely repaving lanes. Please avoid the area. This extended closure period will help reduce the number of remaining weekend full closures required for the RCTC 91 Refresh Project.

Please see detour map below and allow extra travel time due to anticipated delays. Visit rctc.org/91-refresh-closures for more information.



Dates are subject to change, due to weather and other factors. If needed, the closure will be rescheduled as soon as possible.

LANE AND RAMP CLOSURES

In addition to the Westbound 91 lane reductions and Main St. ramp closures noted above, work is planned **November 12-21**. Please see details below.

Northbound 15 to Westbound 91 Connector Closures

- Saturday, November 12, 10 p.m. to 8 a.m.
- Sunday, November 13, 10 p.m. to 4:30 a.m.
- Monday, November 14, through Sunday, November 20, nightly, 8 p.m. to 4:30 a.m.

Southbound 15 to Westbound 91 Connector Closures

- Saturday, November 12, 10 p.m. to 8 a.m.
- Sunday, November 13, 10 p.m. to 4:30 a.m.
- Monday, November 14, through Sunday, November 20, nightly, 8 p.m. to 4:30 a.m.

Westbound 91 Lincoln Ave. Off-Ramp Closures

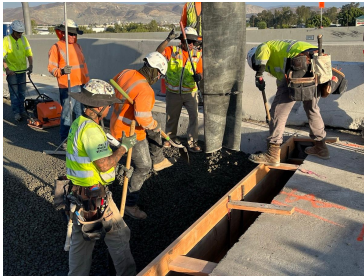
- Saturday, November 12, 10 p.m. to 8:30 a.m.
- Sunday, November 13, 9 p.m. to 4:30 a.m.
- Monday, November 14, through Sunday, November 20, nightly, 8 p.m. to 4:30 a.m.

Westbound 91 Lane Reductions, McKinley St. to Smith Avenue Overcrossing

- Saturday, November 12, 10 p.m. to 8:30 a.m.
- Sunday, November 20, 7:30 p.m. to 4:30 a.m.

Westbound 91 Lane Reductions, I-15 to Smith Avenue Overcrossing

- Sunday, November 13, 9 p.m. to 4:30 a.m.
- Monday, November 14, through Sunday, November 20, nightly, 7:30 p.m. to 4:30 a.m.



Please note that construction activity is subject to change.

ABOUT THE PROJECT

The Riverside County Transportation Commission, in partnership with Caltrans, is delivering the 91 Refresh Project. This project will repave lanes and make repairs to sound walls and associated concrete barriers along the outer portions of eastbound and westbound 91 in Corona. Work will take place along the 91, mainly between the Lincoln Avenue Interchange and Interstate 15, an area with a long history of roadway settlement. Temporary lane shifts, weekend full closures, and lane closures will allow crews to safely complete the repaving and repair work. The project is expected to be completed by the end of 2022.

STRAIGHT TO YOUR MOBILE DEVICE

Text **91REFRESH** to 77222

to sign up for text message updates



Visit our website

STAY CONNECTED



info@rctc.org



rctc.org/91refresh



951-787-7141



91refresh to 77222



RCTC | 4080 Lemon Street, 3rd Floor, Riverside, CA 92501

[Unsubscribe 15project@rctc.org](mailto:15project@rctc.org)

[Update Profile](#) | [Constant Contact Data
Notice](#)

Sent by info@rctc.org powered by



Try email marketing for free today!