



91 REFRESH PROJECT

CONSTRUCTION UPDATE

A Project of the Riverside County Transportation Commission



NOVEMBER 23, 2022

LANE AND RAMP CLOSURES

Construction of the 91 Refresh project in Corona is continuing this week, requiring nighttime lane and ramp closures **November 28 - December 2**. Please see details below.

Northbound 15 to Westbound 91 Connector Closures

- Monday, November 28 and Tuesday, November 29, nightly, 8 p.m. to 4:30 a.m.
- Thursday, December 1, 8 p.m. to 4:30 a.m.
- Friday, December 2, 10 p.m. to 6:30 a.m.

Southbound 15 to Westbound 91 Connector Closures

- Monday, November 28, 8 p.m. to 4:30 a.m.
- Thursday, December 1, 8 p.m. to 4:30 a.m.
- Friday, December 2, 10 p.m. to 6:30 a.m.

Westbound 91 Main St. On-and Off-Ramp Closures

- Monday, November 28 through Thursday, December 1, nightly, 8 p.m. to 4:30 a.m.
- Friday, December 2, 8 p.m. to 7:30 a.m.

Westbound 91 Lincoln Ave. Off-Ramp Closures

- Monday, November 28 through Thursday, December 1, nightly, 8 p.m. to 4:30 a.m.
- Friday, December 2, 8 p.m. to 7:30 a.m.

Westbound 91 Lane Reductions, I-15 to Smith Avenue Overcrossing

- Monday, November 28 through Thursday, December 1, nightly, 7:30 p.m. to 4:30 a.m.
- Friday, December 2, 8 p.m. to 7:30 a.m.

Eastbound 91 Lane Reductions, Lincoln Avenue to McKinley St.

- Tuesday, November 29 and Wednesday, November 30, nightly, 9 p.m. to 6 a.m.

Eastbound 91 Lincoln Ave. On-Ramp Closures

- Tuesday, November 29 and Wednesday, November 30, nightly, 9 p.m. to 5:30 a.m.

Eastbound 91 Main St. On-and Off-Ramp Closures

- Tuesday, November 29 and Wednesday, November 30, nightly, 9 p.m. to 5:30 a.m.

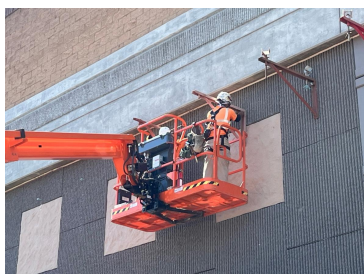
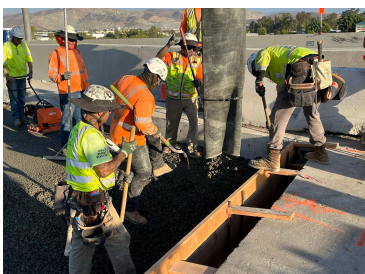
Westbound 91 Express Lanes Closures, McKinley St. to County Line

- Monday, November 28 through Thursday, December 1, nightly, 8 p.m. to 4 a.m.
- Friday, December 2, 10 p.m. to 7 a.m.

Eastbound 91 Express Lanes Closures, County Line to McKinley St.

- Tuesday, November 29 and Wednesday, November 30, nightly, 10 p.m. to 4 a.m.

Reminder: There will be no construction activity beginning Wednesday, Nov. 23 through Sunday, Nov. 27 due to the Thanksgiving holiday.



Please note that construction activity is subject to change.

ABOUT THE PROJECT

The Riverside County Transportation Commission, in partnership with Caltrans, is delivering the 91 Refresh Project. This project will repave lanes and make repairs to sound walls and associated concrete barriers along the outer portions of eastbound and westbound 91 in Corona. Work will take place along the 91, mainly between the Lincoln Avenue Interchange and Interstate 15, an area with a long history of roadway settlement. Temporary lane shifts, weekend full closures, and lane closures will allow crews to safely complete the repaving and repair work. The project is expected to be completed by the end of 2022.

STRAIGHT TO YOUR MOBILE DEVICE

Text **91REFRESH**
to **77222**

to sign up for text
message updates



Visit our website

STAY CONNECTED



info@rctc.org



rctc.org/91refresh



951-787-7141



91refresh to 77222



RCTC | 4080 Lemon Street, 3rd Floor, Riverside, CA 92501

[Unsubscribe 15project@rctc.org](mailto:Unsubscribe_15project@rctc.org)

[Update Profile](#) | [Constant Contact Data Notice](#)

Sent by info@rctc.org powered by



Try email marketing for free today!