



15/91
EXPRESS LANES
CONNECTOR

CONSTRUCTION UPDATE

A Project of the Riverside County Transportation Commission



NOVEMBER 10, 2022

LANE AND RAMP CLOSURES

Construction activity requires nightly lane and ramp closures **November 14-16** for bridge and roadway work as crews continue building the 15/91 Express Lanes Connector. Please see details below.

Southbound 15 to Westbound 91 Connector Closures

- Monday, November 14 and Tuesday, November 15, nightly, 8 p.m. to 5 a.m.

Southbound 15 to Eastbound 91 Connector Closures

- Tuesday, November 15 and Wednesday, November 16, nightly, 9 p.m. to 5 a.m.

Eastbound 91 Main St. On-Ramp Closures

- Wednesday, November 16, 9 p.m. to 6 a.m.

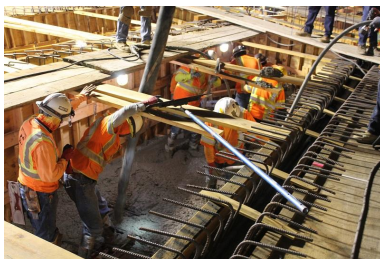
Eastbound 91 Lane Reductions, Main St. to McKinley St.

- Monday, November 14 through Wednesday, November 16, nightly, 9 p.m. to 6 a.m.

Westbound 91 Lane Reductions, McKinley St. to Main St.

- Monday, November 14, 8 p.m. to 5 a.m.

There will be no construction activity on **Thursday, November 10 and Friday, November 11** due to the **Veterans' Day** holiday.



NEIGHBORING PROJECTS

McKinley Street Grade Separation Project

Work is under way on this City of Corona project. For information and construction details, please visit the project [webpage](#) and register for text updates by texting MCKINLEY at 844-518-1409.

STRAIGHT TO YOUR MOBILE DEVICE

Text **CONNECTOR** to
(844) 771-0995

to sign up for text
message updates



PROJECT OVERVIEW

The Riverside County Transportation Commission, in partnership with Caltrans, is building the 15/91 Express Lanes Connector to link the 15 Express Lanes and the 91 Express Lanes for seamless, reliable travel. New connections will be provided:

- From the eastbound 91 Express Lanes to the northbound 15 Express Lanes and
- From the southbound 15 Express Lanes to the westbound 91 Express Lanes

The project also is extending both the eastbound 91 outside general-purpose lane and the eastern end of the 91 Express Lanes approximately one-half mile east to Promenade Avenue to help with vehicle merging in this area. Construction began in April 2021 and the connector is expected to open in 2023.



[Visit our website](#)

STAY CONNECTED

[f](#) [Twitter](#) [Instagram](#) |
 [rctc.org/15-91connector](https://www.rctc.org/15-91connector) |
 [\(844\) 415-9777](tel:(844)415-9777) |
 [\(844\) 771-0995](tel:(844)771-0995)

RCTC- 15/91 Express Lanes Connector | 4080 Lemon Street, 3rd Floor, Riverside, CA 92501

[Unsubscribe 15project@rctc.org](mailto:unsubscribe_15project@rctc.org)

[Update Profile](#) | [Constant Contact Data Notice](#)

Sent by 15-91connector@rctc.org powered by

