



## 91 REFRESH PROJECT

### CONSTRUCTION UPDATE

A Project of the Riverside County Transportation Commission



OCTOBER 28, 2022

## LANE AND RAMP CLOSURES

Construction of the 91 Refresh project in Corona is continuing this week, requiring nighttime lane and ramp closures **October 31 - November 4**. Please see details below.

### Westbound 91 Main St. On-Ramp Closures

- Monday, October 31 through Thursday, November 3, nightly, 8 p.m. to 4:30 a.m.
- Friday, November 4, 8 p.m. to 7:30 a.m.

### Westbound 91 Lincoln Ave. Off-Ramp Closures

- Monday, October 31 through Thursday, November 3, nightly, 8 p.m. to 4:30 a.m.
- Friday, November 4, 8 p.m. to 7:30 a.m.

### Westbound 91 Lane Reductions, I-15 to Smith Avenue Overcrossing

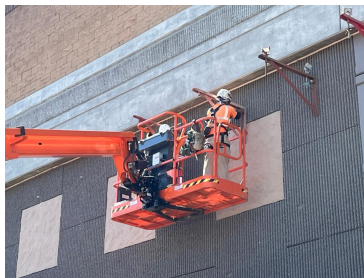
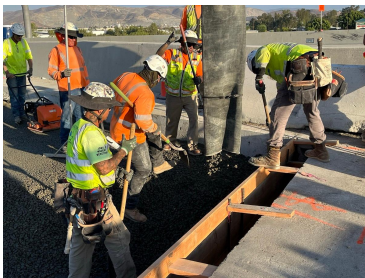
- Monday, October 31 through Thursday, November 3, nightly, 7:30 p.m. to 4:30 a.m.
- Friday, November 4, 8 p.m. to 7:30 a.m.

### Eastbound 91 Lane Reductions, Lincoln Avenue to Main St.

- Tuesday, November 1, 9 p.m. to 6:30 a.m.

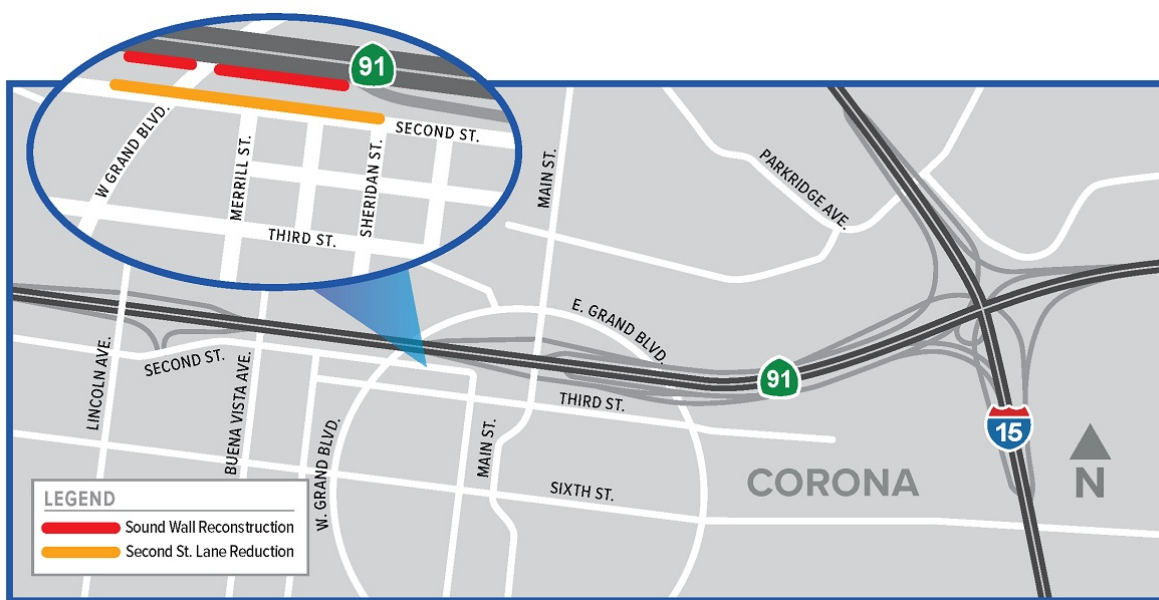
### Eastbound 91 Main St Off-Ramp Closure

- Tuesday, November 1, 9 p.m. to 5:30 a.m.



### **Lane Reductions, Second Street**

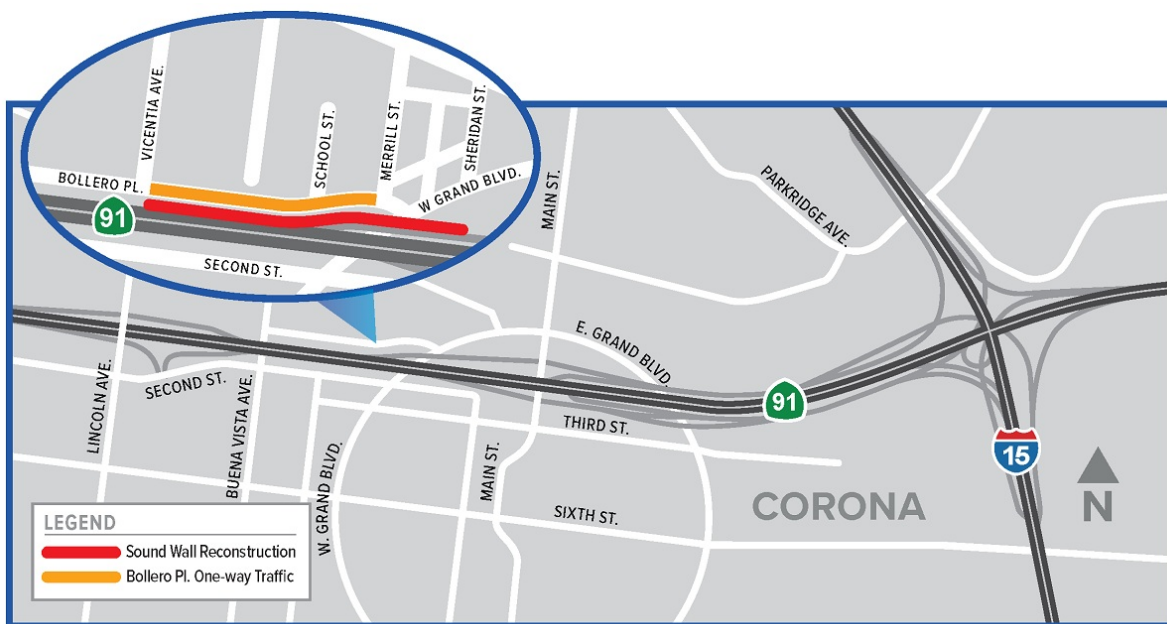
For the safety of the crews and drivers, intermittent lane closures will occur on westbound Second St., between Sheridan St. and W. Grand Blvd., during weekday, daytime hours for sound wall reconstruction. Flaggers also will help motorists travel through the area.



### Reconstruction of Westbound 91 Sound Wall along Bollero Place

Crews began demolishing and rebuilding portions of the westbound 91 sound wall along Bollero Pl., between W. Grand Blvd. and N. Vicentia Ave. Work is scheduled during daytime and nighttime hours.

For the safety of the crews and motorists, intermittent lane closures will occur on Bollero Pl., between Merrill St. and N. Vicentia Ave. Flaggers also will help motorists travel through the area. Street parking may be restricted during construction work.



*Please note that construction activity is subject to change.*

## ABOUT THE PROJECT

The Riverside County Transportation Commission, in partnership with Caltrans, is delivering the 91 Refresh Project. This project will repave lanes and make repairs to sound walls and associated concrete barriers along the outer portions of eastbound and westbound 91 in Corona. Work will take place along the 91, mainly between the Lincoln Avenue Interchange and Interstate 15, an area with a long history of roadway settlement. Temporary lane shifts, weekend full closures, and lane closures will allow crews to safely complete the repaving and repair work. The project is expected to be completed this fall.

STRAIGHT TO YOUR MOBILE DEVICE

Text **91REFRESH**  
to **77222**

to sign up for text  
message updates



Visit our website

## STAY CONNECTED



[info@rctc.org](mailto:info@rctc.org)



[rctc.org/91refresh](http://rctc.org/91refresh)



951-787-7141



91refresh to 77222



RCTC | 4080 Lemon Street, 3rd Floor, Riverside, CA 92501

[Unsubscribe 15project@rctc.org](mailto:15project@rctc.org)

[Update Profile](#) | [Constant Contact Data Notice](#)

Sent by [info@rctc.org](mailto:info@rctc.org) powered by



Try email marketing for free today!