



**91 REFRESH
PROJECT**

CONSTRUCTION UPDATE

A Project of the Riverside County Transportation Commission



OCTOBER 7, 2022

LANE AND RAMP CLOSURES

Construction of the 91 Refresh project in Corona is continuing, requiring lane and ramp closures **October 10-14**. Please see details below.

Westbound 91 Main St. On-Ramp Closures

- Monday, October 10 and Tuesday, October 11, nightly, 8 p.m. to 4:30 a.m.
- Saturday, October 15, 10 p.m. to 8:30 a.m.

Westbound 91 Main St. On- and Off-Ramp Closures

- Wednesday, October 12 and Thursday, October 13, nightly, 8 p.m. to 4:30 a.m.

Westbound 91 Lane Reductions, I-15 to Smith Avenue Overcrossing

- Wednesday, October 12 and Thursday, October 13, nightly, 7:30 p.m. to 4:30 a.m.
- Friday, October 14, 8 p.m. to 7:30 a.m.
- Saturday, October 15, 10 p.m. to 8:30 a.m.

Westbound 91 Express Lanes Closures, McKinley St. to County Line

- Wednesday, October 12 and Thursday, October 13, nightly, 8 p.m. to 4 a.m.

Eastbound 91 Lincoln Ave. Off-Ramp Closures

- Wednesday, October 12 and Thursday, October 13, nightly, 9 p.m. to 5:30 a.m.

Eastbound 91 Main St. Off-Ramp Closures

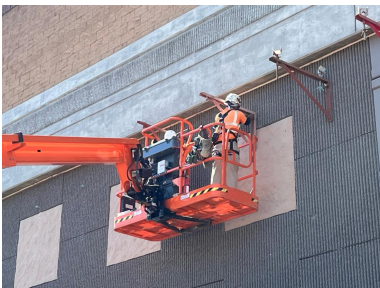
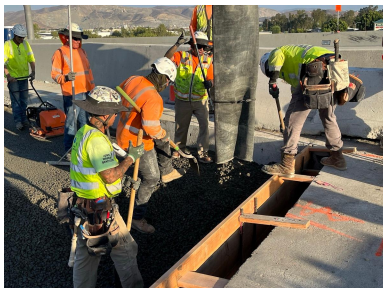
- Monday, October 10 through Thursday, October 13, nightly, 9 p.m. to 5:30 a.m.

Eastbound 91 Lane Reductions, Lincoln Ave. to Main St.

- Monday, October 10 through Thursday, October 13, nightly, 9 p.m. to 6:30 a.m.

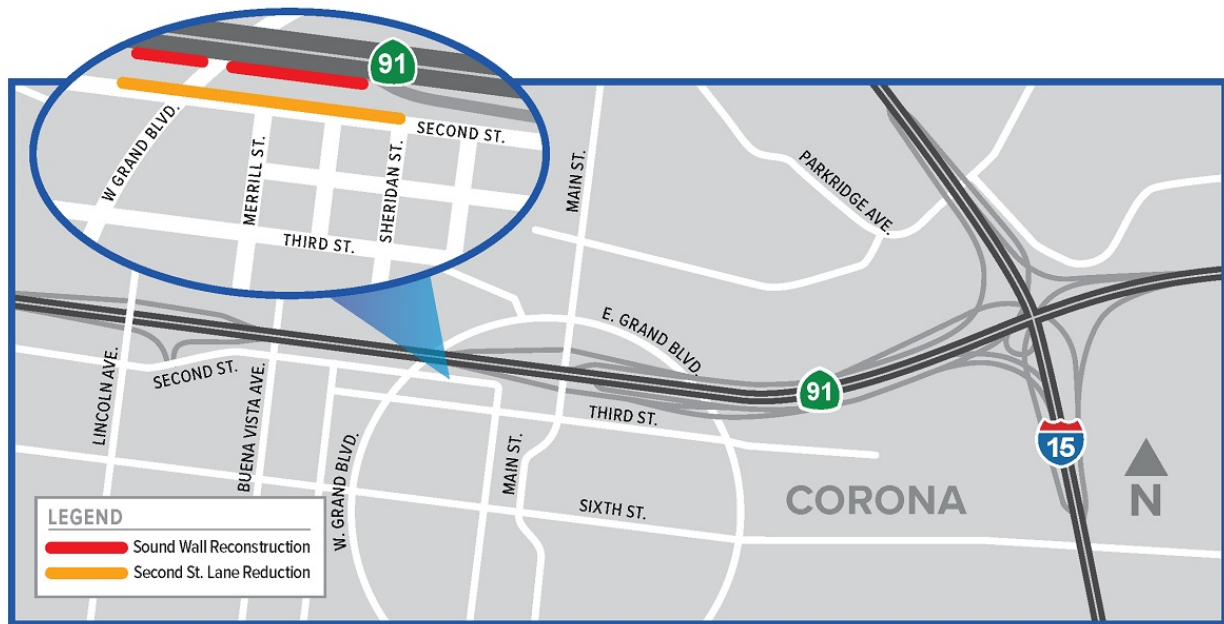
Eastbound 91 Express Lanes Closures, County Line to McKinley St.

- Wednesday, October 12, 10 p.m. to 4 a.m.
- Thursday, October 13, 10 p.m. to 6 a.m.



Lane Reductions, Second Street

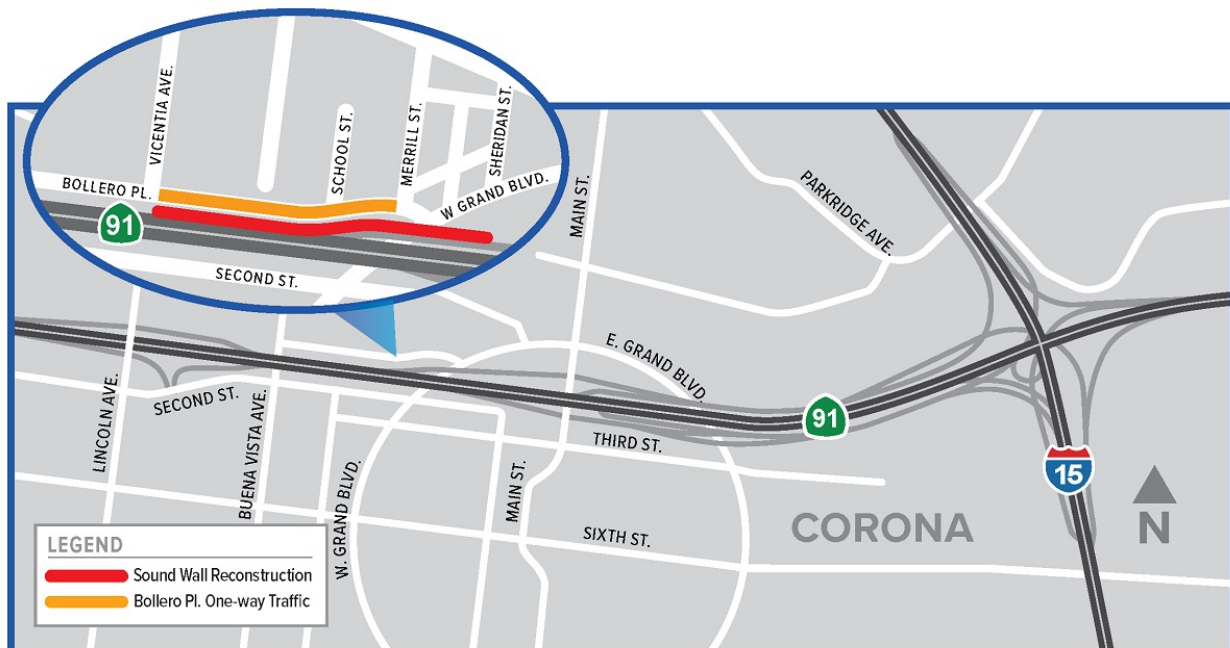
For the safety of the crews and drivers, intermittent lane closures will occur on westbound Second St., between Sheridan St. and W. Grand Blvd., during weekday, daytime hours for sound wall reconstruction. Flaggers also will help motorists travel through the area.



Reconstruction of Westbound 91 Sound Wall along Bollero Place

Crews began demolishing and rebuilding portions of the westbound 91 sound wall along Bollero Pl., between W. Grand Blvd. and N. Vicentia Ave. Work is scheduled during daytime and nighttime hours.

For the safety of the crews and motorists, intermittent lane closures will occur on Bollero Pl., between Merrill St. and N. Vicentia Ave. Flaggers also will help motorists travel through the area. Street parking may be restricted during construction work.



Please note that construction activity is subject to change.

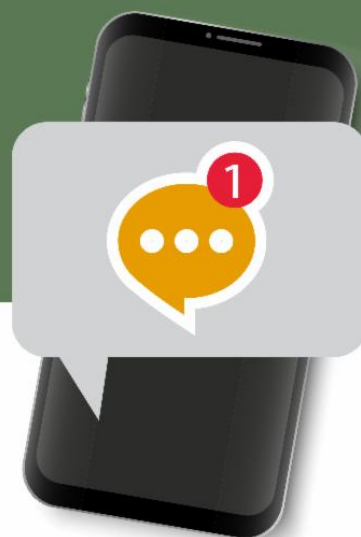
ABOUT THE PROJECT

The Riverside County Transportation Commission, in partnership with Caltrans, is delivering the 91 Refresh Project. This project will repave lanes and make repairs to sound walls and associated concrete barriers along the outer portions of eastbound and westbound 91 in Corona. Work will take place along the 91, mainly between the Lincoln Avenue Interchange and Interstate 15, an area with a long history of roadway settlement. Temporary lane shifts, weekend full closures, and lane closures will allow crews to safely complete the repaving and repair work. The project is expected to be completed this fall.

STRAIGHT TO YOUR MOBILE DEVICE

Text **91REFRESH**
to **77222**

to sign up for text
message updates



Visit our website

STAY CONNECTED



info@rctc.org



rctc.org/91refresh



951-787-7141



91refresh to 77222



RCTC | 4080 Lemon Street, 3rd Floor, Riverside, CA 92501

[Unsubscribe 15project@rctc.org](mailto:Unsubscribe_15project@rctc.org)

[Update Profile](#) | [Constant Contact Data Notice](#)

Sent by info@rctc.org powered by



Try email marketing for free today!