



**91 REFRESH
PROJECT**

CONSTRUCTION UPDATE

A Project of the Riverside County Transportation Commission



OCTOBER 14, 2022 - REVISED



**AVOID THE AREA: FULL CLOSURE NEXT WEEKEND
OCTOBER 21-24
All lanes on eastbound 91 in Corona**

A full closure of eastbound 91 between Lincoln Avenue and Main Street in Corona, including the eastbound 91 Express Lanes in Riverside County, will take place next weekend, **Friday, October 21 at 10 p.m. through Monday, October 24 at 5 a.m.** Heavy traffic delays are expected heading east on the 91 between the 241 Toll Road and I-15.

Motorists are strongly advised to avoid the area by using Route 57 (preferred) or Route 71 (expect heavier traffic) to connect to eastbound Route 60. Through-traffic should avoid traveling east of Route 71. Drivers who travel east to Lincoln Avenue will be required to exit, turn back onto westbound 91, and then travel to northbound 71 to eastbound 60 to reach destinations to the east. The eastbound on-ramps at Auto Center/Serfas Club Drive, Maple Street, and Lincoln Avenue also will be closed.

Please see detour map below and allow extra travel time due to anticipated significant delays. Also, please consider using Metrolink for weekend travel. Visit [metrolinktrains.com](https://www.metrolinktrains.com) for details.

The weekend closure will allow crews to continue safely repaving lanes on eastbound 91. We recognize these closures are difficult for the community and motorists, and the decision to close the lanes is not something that is taken lightly. We appreciate your patience and support.

Please see rctc.org/91RefreshClosures for more information.

Dates are subject to change, due to weather and other factors. If needed, the closure will be rescheduled as soon as possible.



LANE AND RAMP CLOSURES

In addition to the October 21-24 weekend closure noted above, work is planned **October 17-21**. Please see details below.

Westbound 91 Main St. On-Ramp Closure

- Monday, October 17, 8 p.m. to 4:30 a.m.

Westbound 91 Lane Reductions, I-15 to Smith Avenue Overcrossing

- Monday, October 17, 7:30 p.m. to 4:30 a.m.

Eastbound 91 Lincoln Ave. On-Ramp Closures

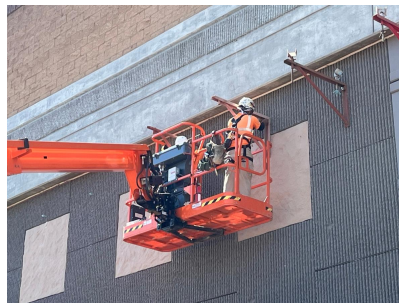
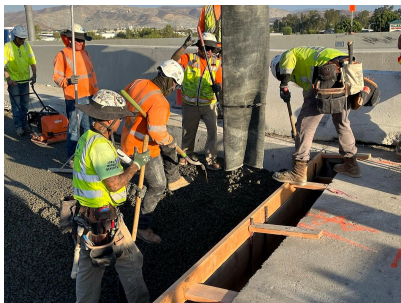
- Monday, October 17, 9 p.m. to 5:30 a.m.
- Wednesday, October 19, and Thursday, October 20, nightly, 9 p.m. to 5:30 a.m.

Eastbound 91 Main St. Off-Ramp Closures

- Monday, October 17, 9 p.m. to 5:30 a.m.
- Wednesday, October 19, and Thursday, October 20, nightly, 9 p.m. to 5:30 a.m.

Eastbound 91 Lane Reductions, Lincoln Ave. to Main St.

- Monday, October 17, 9 p.m. to 6:30 a.m.
- Wednesday, October 19, and Thursday, October 20, nightly, 9 p.m. to 6:30 a.m.



Please note that construction activity is subject to change.

ABOUT THE PROJECT

The Riverside County Transportation Commission, in partnership with Caltrans, is delivering the 91 Refresh Project. This project will repave lanes and make repairs to sound walls and associated concrete barriers along the outer portions of eastbound and westbound 91 in Corona. Work will take place along the 91, mainly between the Lincoln Avenue Interchange and Interstate 15, an area with a long history of roadway settlement. Temporary lane shifts, weekend full closures, and lane closures will allow crews to safely complete the repaving and repair work. The project is expected to be completed this fall.

STRAIGHT TO YOUR MOBILE DEVICE

Text **91REFRESH**
to **77222**

to sign up for text
message updates



Visit our website

STAY CONNECTED



info@rctc.org



rctc.org/91refresh



951-787-7141



91refresh to 77222



RCTC | 4080 Lemon Street, 3rd Floor, Riverside, CA 92501

[Unsubscribe 15project@rctc.org](mailto:Unsubscribe_15project@rctc.org)

[Update Profile](#) | [Constant Contact Data Notice](#)

Sent by info@rctc.org powered by



Try email marketing for free today!