



# CONSTRUCTION UPDATE

A Project of the Riverside County Transportation Commission



## OCTOBER 7, 2022

### Work, work, work: Lots of progress!

Construction continues on the 15/91 Express Lanes Connector.

Press play to see our crews pouring concrete for the bridge deck.



## LANE AND RAMP CLOSURES

Construction activity requires nightly lane and ramp closures **October 10-14** for bridge and roadway work as we continue building the 15/91 Express Lanes Connector. Please see details below.

### **Northbound 15 Lane Reductions, 91 to Hidden Valley Pkwy Off-Ramp.**

- Thursday, October 13, 8 p.m. to 5 a.m.
- Friday, October 14, 9 p.m. to 6 a.m.

### **Southbound 15 Lane Reductions, Hidden Valley Pkwy. to the 91**

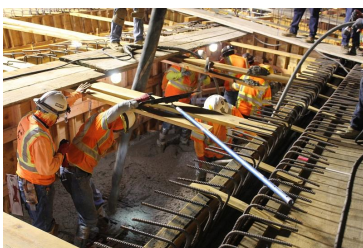
- Monday, October 10 through Friday, October 14, nightly, 9 p.m. to 5 a.m.

### **Eastbound 91 to Northbound 15 Connector Closures**

- Thursday, October 13 8 p.m. to 4 a.m.
- Friday, October 14, 10 p.m. to 6 a.m.

### **Eastbound 91 Main St. On-Ramp Closures**

- Monday, October 10 and Tuesday, October 11, nightly, 9 p.m. to 6 a.m.
- Friday, October 14, 10 p.m. to 8 a.m.



*Please note that construction activity is subject to change.*

## NEIGHBORING PROJECTS

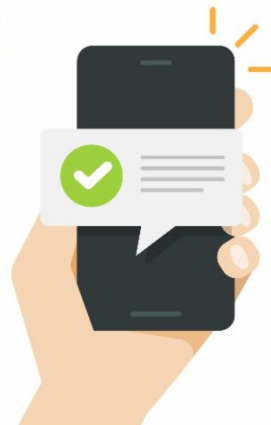
### McKinley Street Grade Separation Project

Work is under way on this City of Corona project. For information and construction details, please visit the project [webpage](#) and register for text updates by texting MCKINLEY at 844-518-1409.

## STRAIGHT TO YOUR MOBILE DEVICE

Text **CONNECTOR** to  
**(844) 771-0995**

to sign up for text  
message updates



## PROJECT OVERVIEW

The Riverside County Transportation Commission, in partnership with Caltrans, is building the 15/91 Express Lanes Connector to link the 15 Express Lanes and the 91 Express Lanes for seamless, reliable travel. New connections will be provided:







- From the eastbound 91 Express Lanes to the northbound 15 Express Lanes and
- From the southbound 15 Express Lanes to the westbound 91 Express Lanes

The project also is extending both the eastbound 91 outside general-purpose lane and the eastern end of the 91 Express Lanes approximately one-half mile east to Promenade Avenue to help with vehicle merging in this area. Construction began in April 2021 and the connector is expected to open in 2023.



Visit our website

**STAY CONNECTED**

[@1591Connector](#) | [rctc.org/15-91connector](http://rctc.org/15-91connector) | (844) 415-9777 | (844) 771-0995

RCTC- 15/91 Express Lanes Connector | 4080 Lemon Street, 3rd Floor, Riverside, CA 92501

[Unsubscribe 15project@rctc.org](mailto:Unsubscribe_15project@rctc.org)

[Update Profile](#) | [Constant Contact Data Notice](#)

Sent by 15-91connector@rctc.org powered by



Try email marketing for free today!