

CONSTRUCTION UPDATE

A Project of the Riverside County Transportation Commission



OCTOBER 14, 2022

LANE AND RAMP CLOSURES

Construction activity requires nightly lane and ramp closures **October 17-21** for bridge and roadway work as we continue building the 15/91 Express Lanes Connector. Please see details below.

Southbound 15 Lane Reductions, Hidden Valley Pkwy. to the 91

- Monday, October 17, 9 p.m. to 5 a.m.

Southbound 15 to Westbound 91 Connector Closures

- Monday, October 17, 9 p.m. to 5 a.m.
- Wednesday, October 19, p.m. to 5 a.m.

Southbound 15 to Eastbound 91 Connector Closures

- Thursday, October 20, 9 p.m. to 5 a.m.

Northbound 15 to Eastbound 91 Connector Closure

- Thursday, October 20, 10 p.m. to 6 a.m.

Eastbound 91 Lane Reductions, Lincoln Ave. to McKinley St.

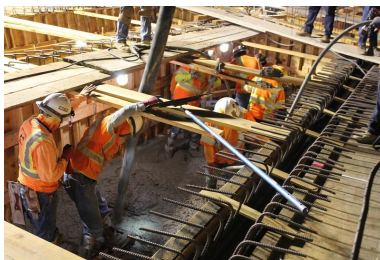
- Thursday, October 20, 10 p.m. to 6 a.m.

Eastbound 91 Main St. On-Ramp Closure

- Thursday, October 20, 10 p.m. to 6 a.m.

Westbound 91 Lane Reductions, McKinley St. to Main St.

- Wednesday, October 19, 8 p.m. to 5 a.m.



Please note that construction activity is subject to change.

McKinley Street Grade Separation Project

Work is under way on this City of Corona project. For information and construction details, please visit the project [webpage](#) and register for text updates by texting MCKINLEY at 844-518-1409.

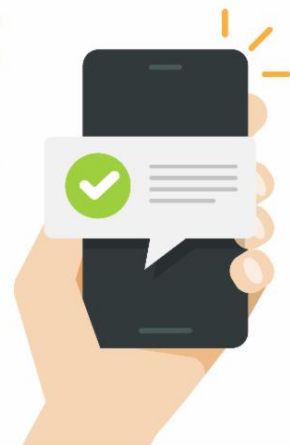
Westbound and Eastbound 91 Lane Reductions, County Line to Magnolia Ave.

Caltrans is conducting daytime roadway maintenance along westbound and eastbound 91 between the Orange/Riverside County line to Magnolia Ave., Monday, October 17 through Thursday, October 20, 8:30 a.m. to 3 p.m.

STRAIGHT TO YOUR MOBILE DEVICE

Text **CONNECTOR** to
(844) 771-0995

to sign up for text
message updates



PROJECT OVERVIEW

The Riverside County Transportation Commission, in partnership with Caltrans, is building the 15/91 Express Lanes Connector to link the 15 Express Lanes and the 91 Express Lanes for seamless, reliable travel. New connections will be provided:




- From the eastbound 91 Express Lanes to the northbound 15 Express Lanes and
- From the southbound 15 Express Lanes to the westbound 91 Express Lanes



The project also is extending both the eastbound 91 outside general-purpose lane and the eastern end of the 91 Express Lanes approximately one-half mile east to Promenade Avenue to help with vehicle merging in this area. Construction began in April 2021 and the connector is expected to open in 2023.



Visit our website

STAY CONNECTED

[@1591Connector](#) | rctc.org/15-91connector | (844) 415-9777 | (844) 771-0995

RCTC- 15/91 Express Lanes Connector | 4080 Lemon Street, 3rd Floor, Riverside, CA 92501

[Unsubscribe 15project@rctc.org](mailto:15project@rctc.org)

[Update Profile](#) | [Constant Contact Data Notice](#)

Sent by 15-91connector@rctc.org powered by



Try email marketing for free today!