



**91 REFRESH  
PROJECT**

## CONSTRUCTION UPDATE

A Project of the Riverside County Transportation Commission



**SEPTEMBER 23, 2022**

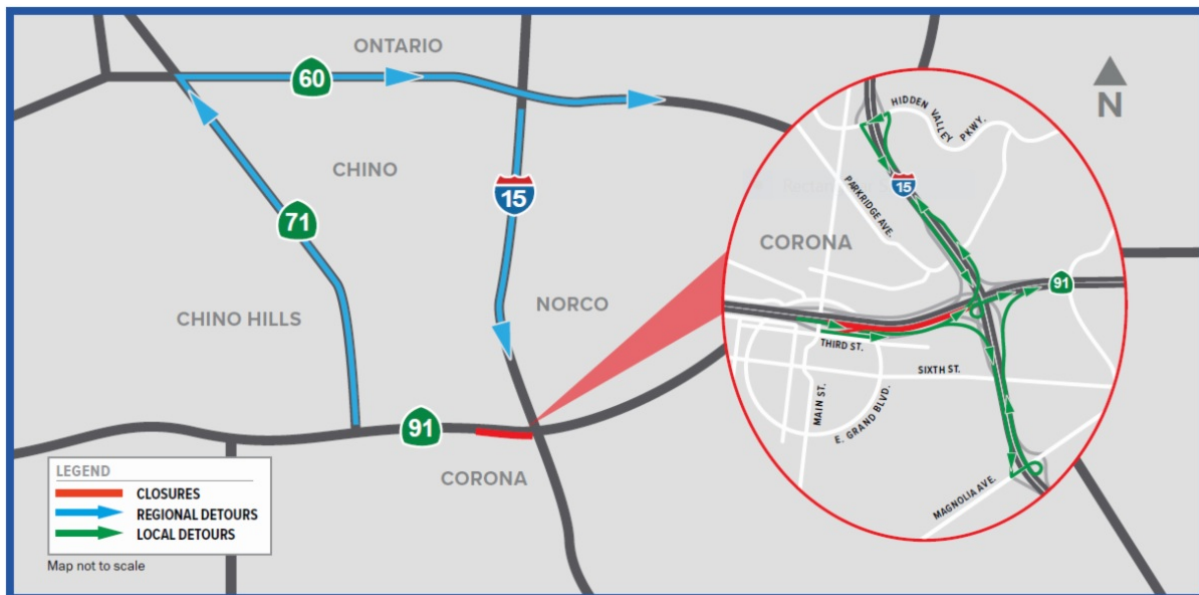


### IMPORTANT UPDATE

A full closure of eastbound 91 between Main St. and just west of I-15 in Corona will take place next weekend, **Friday, Sept. 30 at 10 p.m. through Monday, Oct. 3 at 5 a.m.** for crews to continue safely repaving lanes on eastbound 91. The eastbound 91 Express Lanes and eastbound 91 Main St. on-ramp also will be closed during this

time.

Avoid the area by using Route 60, Route 71, Route 57, or Interstates 15 or 215 to reconnect to eastbound 91. Please see detour map below and allow extra travel time due to anticipated significant delays. Also, please consider using Metrolink for weekend travel. Visit [metrolinktrains.com](https://www.metrolinktrains.com) for details.



### LANE AND RAMP CLOSURES

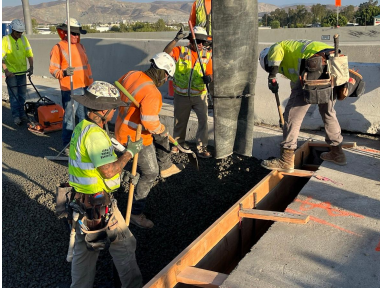
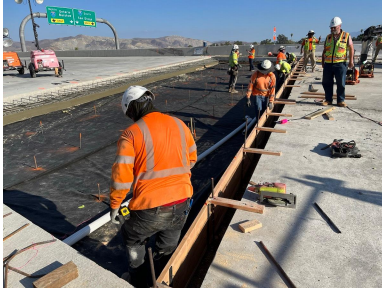
Construction of the 91 Refresh project in Corona is continuing, requiring lane and ramp closures **September 26-30**. Please see details below.

#### Westbound 91 Main St. On-Ramp Lane Reductions

- Monday, September 26 through Friday, September 30, daily, 9 a.m. to 3 p.m.

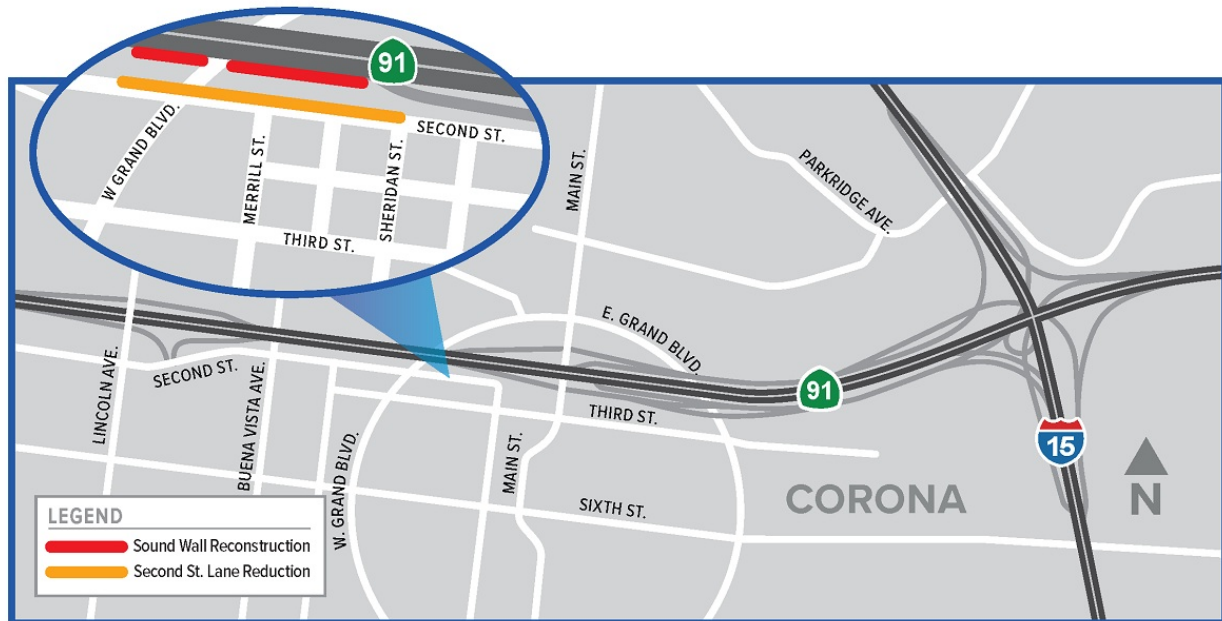
### **Westbound 91 Main St. On-Ramp Closures**

- Monday, September 26 through Thursday, September 29, nightly, 8 p.m. to 4:30 a.m.
- Friday, September 30, 8 p.m. to 7:30 a.m.



### **Lane Reductions, Second Street**

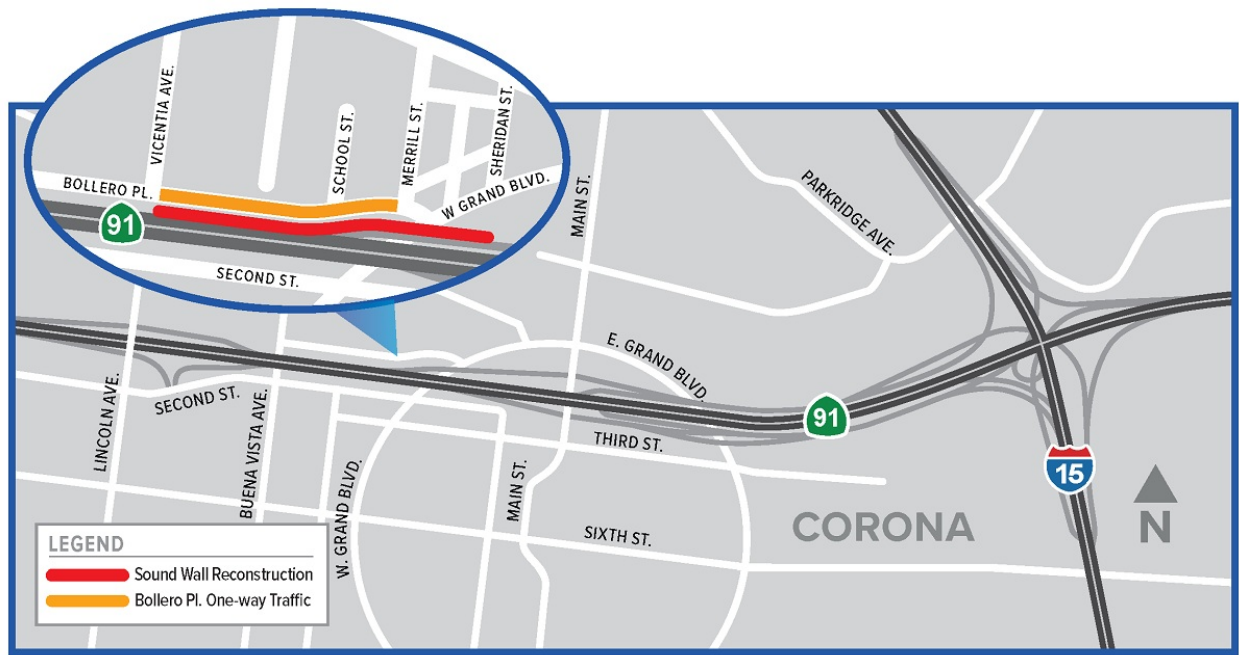
For the safety of the crews and drivers, intermittent lane closures will occur on westbound Second St., between Sheridan St. and W. Grand Blvd., during weekday, daytime hours for sound wall reconstruction. Flaggers also will help motorists travel through the area.



### **Reconstruction of Westbound 91 Sound Wall along Bollero Place**

Crews began demolishing and rebuilding portions of the westbound 91 sound wall along Bollero Pl., between W. Grand Blvd. and N. Vicentia Ave. Work is scheduled during daytime and nighttime hours.

For the safety of the crews and motorists, intermittent lane closures will occur on Bollero Pl., between Merrill St. and N. Vicentia Ave. Flaggers also will help motorists travel through the area. Street parking may be restricted during construction work.



*Please note that construction activity is subject to change.*

## ABOUT THE PROJECT

The Riverside County Transportation Commission, in partnership with Caltrans, is delivering the 91 Refresh Project. This project will repave lanes and make repairs to sound walls and associated concrete barriers along the outer portions of eastbound and westbound 91 in Corona. Work will take place along the 91, mainly between the Lincoln Avenue Interchange and Interstate 15, an area with a long history of roadway settlement. Temporary lane shifts, weekend full closures, and lane closures will allow crews to safely complete the repaving and repair work. The project is expected to be completed this fall.

## STRAIGHT TO YOUR MOBILE DEVICE

Text **91REFRESH**  
to **77222**

**to sign up for text  
message updates**



Visit our website

## STAY CONNECTED



info@rctc.org



rctc.org/91refresh



951-787-7141



91refresh to 77222



RCTC | 4080 Lemon Street, 3rd Floor, Riverside, CA 92501

[Unsubscribe 15project@rctc.org](#)

[Update Profile](#) | [Constant Contact Data Notice](#)

Sent by info@rctc.org powered by



Try email marketing for free today!