



## 91 REFRESH PROJECT

### CONSTRUCTION UPDATE

A Project of the Riverside County Transportation Commission



SEPTEMBER 12, 2022

## EASTBOUND 91 WEEKEND FULL CLOSURE SEPTEMBER 16-19

### WEEKEND FULL CLOSURE FOR LANE REPAVING:

All lanes on eastbound 91 in  
Corona, Main St. to just west of I-15

Friday, September 16, 9 p.m. to  
Monday, September 19, 5 a.m.



A full closure of eastbound 91 between Main St. and just west of I-15 in Corona will take place **Friday, September 16 at 9 p.m. through Monday, September 19 at 5 a.m.** for crews to safely repave lanes. The eastbound 91 Express Lanes and eastbound 91 Main street on-ramp also will be closed during this time.

Press play for more details.

## LANE AND RAMP CLOSURES

Construction of the 91 Refresh project in Corona is continuing, requiring lane and ramp closures **September 12-19**. Please see details below.

### Westbound 91 Main St. On-Ramp Daily Lane Reductions

- Monday, September 12 through Friday, September 16, daily, 9 a.m. to 3 p.m.

### Eastbound 91 Main St. On-Ramp Closures

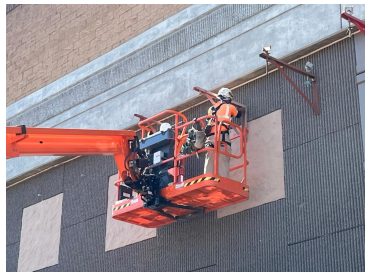
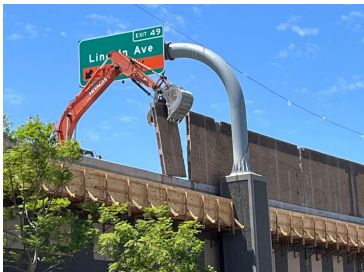
- Wednesday, September 14 and Thursday, September 15, nightly, 9 p.m. to 5:30 a.m.
- Friday, September 16, 9 p.m. to Monday, September 19, 5 a.m.

### Eastbound 91, Main St. to I-15

- Wednesday, September 14 and Thursday, September 15, nightly, 9 p.m. to 6 a.m. - Lane Reductions
- Friday, September 16, 9 pm. to Monday, September 19, 5 a.m. - Full Closure

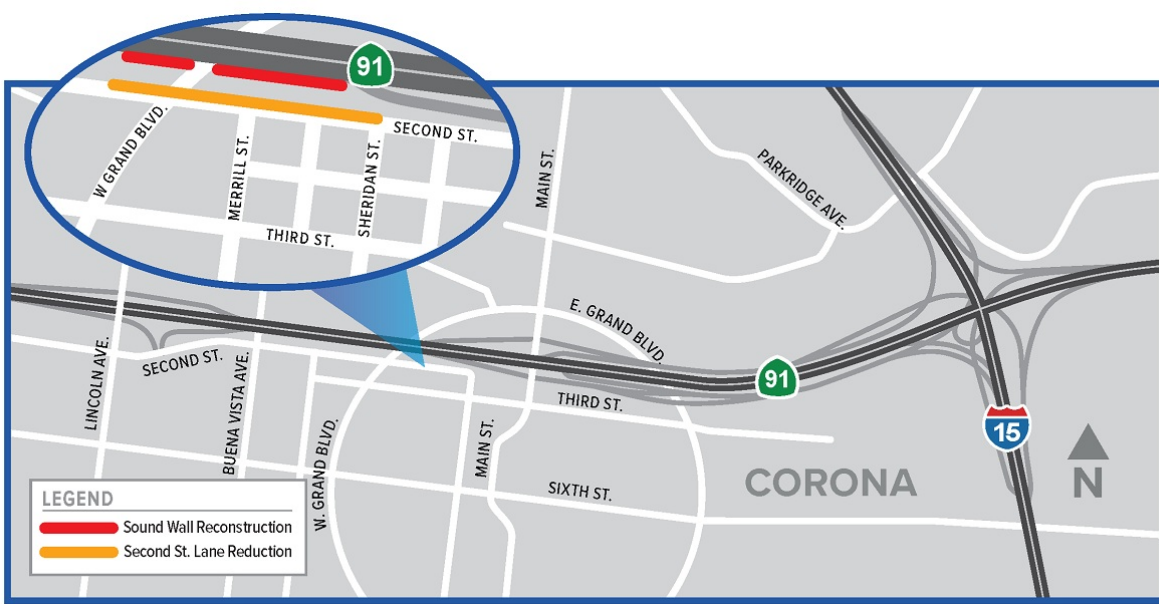
### Eastbound 91 Express Lanes Closures

- Wednesday, September 14, 10 p.m. to 4 a.m.
- Thursday, September 15, 10 p.m. to 6 a.m.
- Friday, September 16, 9 p.m. to Monday, September 19, 5 a.m.



### Lane Reductions, Second Street

For the safety of the crews and drivers, intermittent lane closures will occur on westbound Second St., between Sheridan St. and W. Grand Blvd., during weekday, daytime hours for sound wall reconstruction. Flaggers also will help motorists travel through the area.



### Reconstruction of Westbound 91 Sound Wall along Bollero Place

Crews began demolishing and rebuilding portions of the westbound 91 sound wall along Bollero Pl., between W. Grand Blvd. and N. Vicentia Ave. Work is scheduled during daytime and nighttime hours.

For the safety of the crews and motorists, intermittent lane closures will occur on Bollero Pl., between Merrill St. and N. Vicentia Ave. Flaggers also will help motorists travel through the area. Street parking may be restricted during construction work.



*Please note that construction activity is subject to change.*

## ABOUT THE PROJECT

The Riverside County Transportation Commission, in partnership with Caltrans, is delivering the 91 Refresh Project. This project will repave lanes and make repairs to sound walls and associated concrete barriers along the outer portions of eastbound and westbound 91 in Corona. Work will take place along the 91, mainly between the Lincoln Avenue Interchange and Interstate 15, an area with a long history of roadway settlement due to the Temescal Wash. Temporary lane shifts, weekend full closures, and lane closures will allow crews to safely complete the repaving and repair work. The project is expected to be completed this fall.

## STRAIGHT TO YOUR MOBILE DEVICE

Text **91REFRESH**  
to **77222**

to sign up for text  
message updates



Visit our website

## STAY CONNECTED



[info@rctc.org](mailto:info@rctc.org)



[rctc.org/91refresh](http://rctc.org/91refresh)



951-787-7141



91refresh to 77222



RCTC | 4080 Lemon Street, 3rd Floor, Riverside, CA 92501

[Unsubscribe 15project@rctc.org](mailto:15project@rctc.org)

[Update Profile](#) | [Constant Contact Data Notice](#)

Sent by [info@rctc.org](mailto:info@rctc.org) powered by



Try email marketing for free today!