



15/91
EXPRESS LANES
CONNECTOR

CONSTRUCTION UPDATE

A Project of the Riverside County Transportation Commission



SEPTEMBER 5, 2022

LANE AND RAMP CLOSURES

Construction activity requires nightly lane and ramp closures **September 6-10** for bridge and roadway work as we continue building the 15/91 Express Lanes Connector. Please see details below.

Westbound 91 Lane Reductions, McKinley St. to Main St.

- Tuesday, September 6 through Thursday, September 8, nightly, 8 p.m. to 4 a.m.
- Friday, September 9 and Saturday, September 10, nightly, 10 p.m. to 6 a.m.

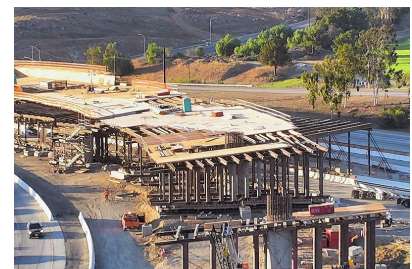
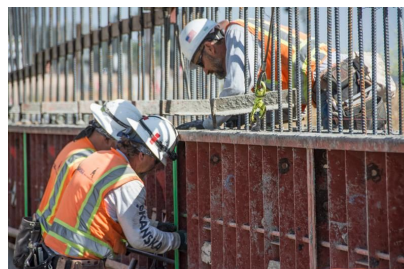
Eastbound 91 Lane Reductions, Lincoln Ave. to McKinley St.

- Friday, September 9 and Saturday, September 10, nightly, 10 p.m. to 6 a.m.

Southbound 15 Lane Reductions, Hidden Valley Pkwy. to the 91

- Tuesday, September 6 through Thursday, September 8, nightly, 9 p.m. to 5 a.m.
- Friday, September 9, 9 p.m. to 6 a.m.

There will be no closures Monday, September 5, due to the Labor Day holiday weekend.



Please note that construction activity is subject to change.

NEIGHBORING PROJECTS

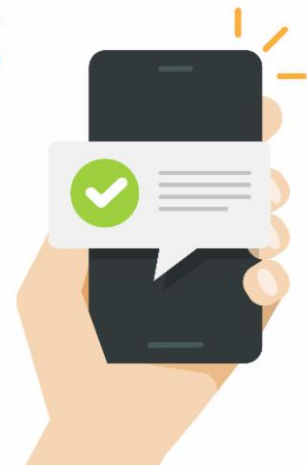
McKinley Street Grade Separation Project

Work is under way on this City of Corona project. For information and construction details, please visit the project [webpage](#) and register for text updates by texting MCKINLEY at 844-518-1409.

STRAIGHT TO YOUR MOBILE DEVICE

Text **CONNECTOR** to
(844) 771-0995

to sign up for text
message updates



PROJECT OVERVIEW

The Riverside County Transportation Commission, in partnership with Caltrans, is building the 15/91 Express Lanes Connector to link the 15 Express Lanes and the 91 Express Lanes for seamless, reliable travel. New connections will be provided:







- From the eastbound 91 Express Lanes to the northbound 15 Express Lanes and
- From the southbound 15 Express Lanes to the westbound 91 Express Lanes

The project also is extending both the eastbound 91 outside general-purpose lane and the eastern end of the 91 Express Lanes approximately one-half mile east to Promenade Avenue to help with vehicle merging in this area. Construction began in April 2021 and the connector is expected to open in 2023.



Visit our website

STAY CONNECTED

[@1591Connector](#) | rctc.org/15-91connector | (844) 415-9777 | (844) 771-0995

RCTC- 15/91 Express Lanes Connector | 4080 Lemon Street, 3rd Floor, Riverside, CA 92501

[Unsubscribe 15project@rctc.org](mailto:Unsubscribe_15project@rctc.org)
[Update Profile](#) | [Constant Contact Data Notice](#)
 Sent by 15-91connector@rctc.org powered by

