



15/91
EXPRESS LANES
CONNECTOR

CONSTRUCTION UPDATE

A Project of the Riverside County Transportation Commission



AUGUST 8, 2022

A Weekend of Work in 60 Seconds!

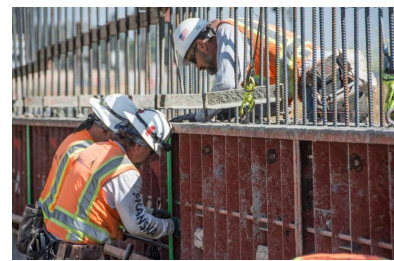
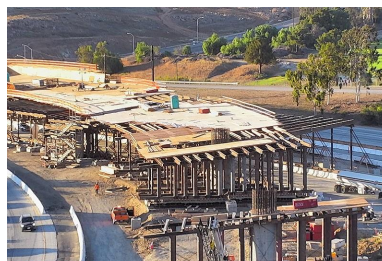
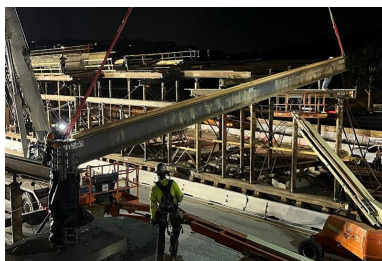
Have you seen the progress on the 15/91 Express Lanes Connector project?

Everybody loves a good time-lapse video! Watch the quick recap of our recent weekend closure activity. Impressive!



LANE AND RAMP CLOSURES

Please note - there are **no scheduled closures** next week for the 15/91 Express Lanes Connector Project. Please continue to watch your speed and drive safely through the construction area.



Please note that construction activity is subject to change.

15 INTERIM CORRIDOR OPERATIONS PROJECT



Interstate 15
INTERIM CORRIDOR
OPERATIONS PROJECT

The new southbound I-15 lane between Cajalco Road in Corona and Weirick Road in

Temescal Valley opened July 23.

For project closeout activities, crews will be working as follows:

Southbound 15, El Cerrito Rd. to Weirick Rd. Lane Reductions

- Thursday, August 11, 9 p.m. to 6 a.m.

Southbound 15, Cajalco Rd. On-Ramp Closure

- Thursday, August 11, 9 p.m. to 6 a.m.

Southbound 15, Weirick Rd. Off-Ramp Closure

- Thursday, August 11, 9 p.m. to 6 a.m.

In addition, Caltrans is performing work along I-15 and the 91, requiring various on-ramp and off-ramp daytime closures in the Corona area. Please follow detour signs.



NEIGHBORING PROJECTS

McKinley Street Grade Separation Project

Work is under way on this City of Corona project. For information and construction details, please visit the project [webpage](#) and register for text updates by texting MCKINLEY at 844-518-1409.

STRAIGHT TO YOUR MOBILE DEVICE

**Text CONNECTOR to
(844) 771-0995**

**to sign up for text
message updates**



PROJECT OVERVIEW

The Riverside County Transportation Commission, in partnership with Caltrans, is building the 15/91 Express Lanes Connector to link the 15 Express Lanes and the 91 Express Lanes for seamless, reliable travel. New connections will be provided:

- From the eastbound 91 Express Lanes to the northbound 15 Express Lanes and
- From the southbound 15 Express Lanes to the westbound 91 Express Lanes

The project also is extending both the eastbound 91 outside general-purpose lane and the eastern end of the 91 Express Lanes approximately one-half mile east to Promenade Avenue to help with vehicle merging in this area. Construction began in April 2021 and the connector is expected to open in 2023.



[Visit our website](#)

STAY CONNECTED



@1591Connector



rctc.org/15-91connector



(844) 415-9777



(844) 771-0995