



15/91  
EXPRESS LANES  
CONNECTOR

## CONSTRUCTION UPDATE

A Project of the Riverside County Transportation Commission



AUGUST 22, 2022

### LANE AND RAMP CLOSURES

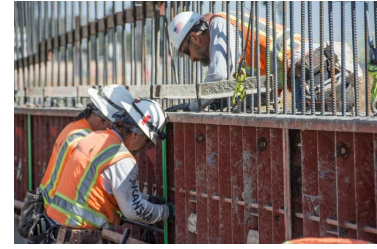
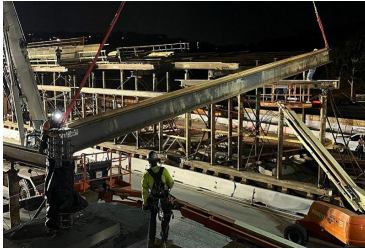
Construction activity will require nightly lane and ramp closures **August 22-26** for bridge and roadway work as we continue building the 15/91 Express Lanes Connector. Please see details below.

**Westbound 91 Lane Reductions, McKinley St. to Main St.**

- Monday, August 22 through Thursday, August 25, nightly, 8 p.m. to 4 a.m.
- Friday, August 26, 10 p.m. to 6 a.m.

**Southbound 15 Lane Closures, Hidden Valley Pkwy. to the 91**

- Monday, August 22 through Thursday, August 25, nightly, 9 p.m. to 5 a.m.
- Friday, August 26, 9 p.m. to 6 a.m.



*Please note that construction activity is subject to change.*

### NEIGHBORING PROJECTS

**McKinley Street Grade Separation Project**

Work is under way on this City of Corona project. For information and construction details, please visit the project [webpage](#) and register for text updates by texting MCKINLEY at 844-518-1409.

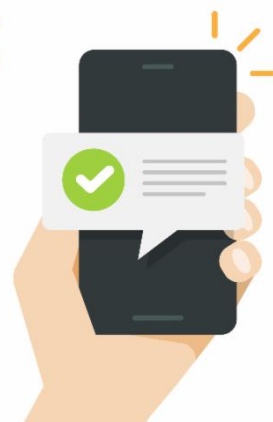
### STRAIGHT TO YOUR MOBILE DEVICE

Text **CONNECTOR** to  
**(844) 771-0995**

to sign up for text  
message updates



15/91  
EXPRESS LANES  
CONNECTOR



## PROJECT OVERVIEW

The Riverside County Transportation Commission, in partnership with Caltrans, is building the 15/91 Express Lanes Connector to link the 15 Express Lanes and the 91 Express Lanes for seamless, reliable travel. New connections will be provided:

- From the eastbound 91 Express Lanes to the northbound 15 Express Lanes and
- From the southbound 15 Express Lanes to the westbound 91 Express Lanes

The project also is extending both the eastbound 91 outside general-purpose lane and the eastern end of the 91 Express Lanes approximately one-half mile east to Promenade Avenue to help with vehicle merging in this area. Construction began in April 2021 and the connector is expected to open in 2023.



Visit our website

### STAY CONNECTED



@1591Connector



[rctc.org/15-91connector](https://rctc.org/15-91connector)



(844) 415-9777



(844) 771-0995

RCTC- 15/91 Express Lanes Connector | 4080 Lemon Street, 3rd Floor, Riverside, CA 92501

[Unsubscribe 15project@rctc.org](mailto:15project@rctc.org)

[Update Profile](#) | [Constant Contact Data Notice](#)

Sent by [15-91connector@rctc.org](mailto:15-91connector@rctc.org) powered by



Try email marketing for free today!