



15/91
EXPRESS LANES
CONNECTOR

CONSTRUCTION UPDATE

A Project of the Riverside County Transportation Commission



JULY 29, 2022

LANE AND RAMP CLOSURES

Construction activity will require nightly lane and ramp closures **August 1-5** for bridge and roadway work as we continue building the 15/91 Express Lanes Connector. Please see details below.

Westbound 91 Lane Reductions, McKinley St. to Main St.

- Monday, August 1 through Thursday, August 4, nightly 8 p.m. to 4 a.m.
- Friday, August 5, 10 p.m. to 6 a.m.

Eastbound 91 Lane Reductions, Main St. to McKinley St.

- Wednesday, August 3, 9 p.m. to 6 a.m.

Eastbound 91 Main St. On-Ramp Closures

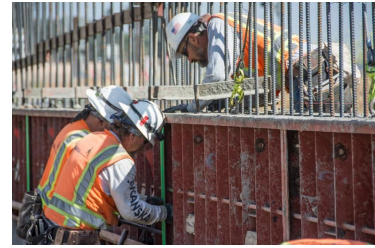
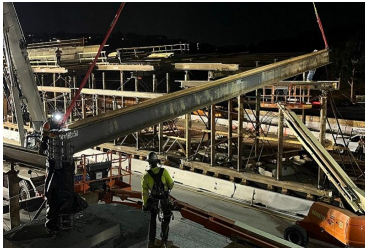
- Wednesday, August 3, 9 p.m. to 6 a.m.

Northbound 15 to Eastbound 91 Connector Closures

- Monday, August 1, 8 p.m. to 4 a.m.

Southbound 15 Lane Reductions, Hidden Valley Pkwy. to the 91

- Monday, August 1 through Thursday, August 4, nightly, 9 p.m. to 5 a.m.
- Friday, August 5, 9 p.m. to 6 a.m.



Please note that construction activity is subject to change.

15 INTERIM CORRIDOR OPERATIONS PROJECT



Interstate 15
INTERIM CORRIDOR
OPERATIONS PROJECT

New Lane is Open - Press Play!

The new southbound I-15 lane between Cajalco Road in Corona and Weirick Road in Temescal Valley opened July 23.

For project closeout activities, crews will be working on the southbound I-15 right-hand shoulder, El Cerrito Road to Weirick Road, Monday, August 9, from 9 a.m. to 3 p.m. Please watch for our crews.



Thank you to the residents and motorists in this area for your support during this fast-moving project. Please watch for updates on future work in the I-15 corridor and follow @therctc on social media.

NEIGHBORING PROJECTS

McKinley Street Grade Separation Project

Work is under way on this City of Corona project. For information and construction details, please visit the project [webpage](#) and register for text updates by texting MCKINLEY at 844-518-1409.

STRAIGHT TO YOUR MOBILE DEVICE

Text **CONNECTOR** to
(844) 771-0995

to sign up for text
message updates



PROJECT OVERVIEW

The Riverside County Transportation Commission, in partnership with Caltrans, is building the 15/91 Express Lanes Connector to link the 15 Express Lanes and the 91 Express Lanes for seamless, reliable travel. New connections will be provided:

- From the eastbound 91 Express Lanes to the northbound 15 Express Lanes and
- From the southbound 15 Express Lanes to the westbound 91 Express Lanes

The project also is extending both the eastbound 91 outside general-purpose lane and the eastern end of the 91 Express Lanes approximately one-half mile east to Promenade Avenue to help with vehicle merging in this area. Construction began in April 2021 and the connector is expected to open in 2023.



Visit our website

STAY CONNECTED



@1591Connector



rctc.org/15-91connector



(844) 415-9777



(844) 771-0995