



15/91  
EXPRESS LANES  
CONNECTOR

# CONSTRUCTION UPDATE

A Project of the Riverside County Transportation Commission



**JULY 15, 2022**

## LANE AND RAMP CLOSURES

Construction activity will require nightly lane and ramp closures **July 18-22** for bridge and roadway work as we continue building the 15/91 Express Lanes Connector. Please see details below.

### Eastbound 91 Lane Closures, Main St. to McKinley St.

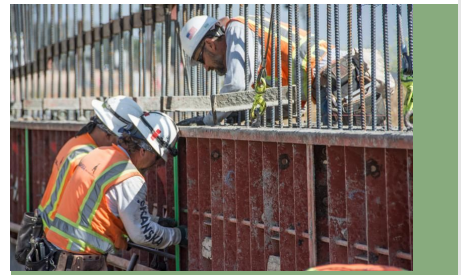
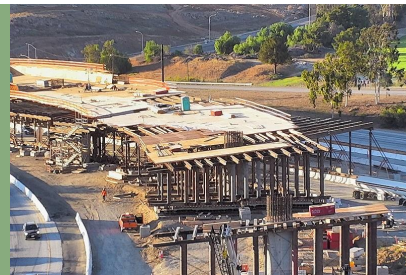
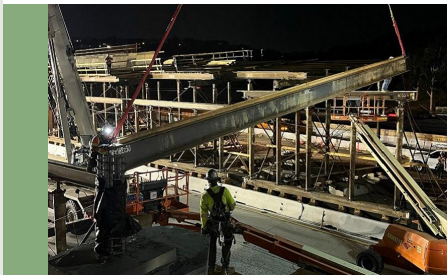
- Wednesday, July 20, 9 p.m. to 6 a.m.
- Thursday July 21 and Friday, July 22, nightly, 10 p.m. to 6 a.m.

### Northbound 15 to Eastbound 91 Connector Closures

- Monday, July 18, 8 p.m. to 4 a.m.
- Wednesday, July 20, 8 p.m. to 4 a.m.

### Eastbound 91 Express Lane Closures

- Wednesday, July 20, 10 p.m. to 4 a.m.
- Thursday, July 21, 10 p.m. to 6 a.m.
- Friday, July 22, 10 p.m. to 7 a.m.



*Please note that construction activity is subject to change.*

## 15 INTERIM CORRIDOR OPERATIONS PROJECT



Interstate 15  
INTERIM CORRIDOR  
OPERATIONS PROJECT

Nightly lane closures are needed July 18-21 for ongoing work to add the new lane to southbound I-15. Please see details below.

### Southbound 15 Lane Closures, El Cerrito Road to Weirick Road

- Monday, July 18 through Thursday, July 21, nightly, 9 p.m. to 6 a.m.

### Southbound 15 Cajalco Road On-Ramp Closures

- Monday, July 18 through Thursday, July 21, nightly, 9 p.m. to 6 a.m.

The 15 Interim Corridor Operations Project will add a non-tolled travel lane to southbound I-15 between the Cajalco Road on-ramp and the Weirick Road off-ramp. Completion is anticipated in late summer/early fall.

Watch for updates or visit [rctc.org/15icop](https://rctc.org/15icop) for more information. Please sign up for text messages by texting **15iCOP** to (844) 771-0995.





## NEIGHBORING PROJECTS

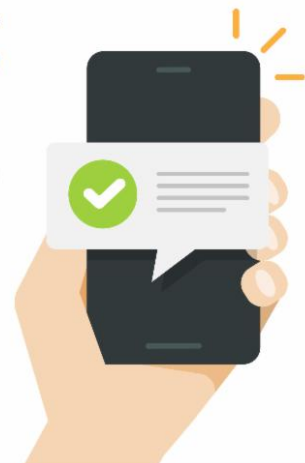
### **McKinley Street Grade Separation Project**

Work is under way on this City of Corona project. For information and construction details, please visit the project [webpage](#) and register for text updates by texting MCKINLEY at 844-518-1409.

## STRAIGHT TO YOUR MOBILE DEVICE

Text **CONNECTOR** to  
**(844) 771-0995**

to sign up for text  
message updates



## PROJECT OVERVIEW

The Riverside County Transportation Commission, in partnership with Caltrans, is building

the 15/91 Express Lanes Connector to link the 15 Express Lanes and the 91 Express Lanes for seamless, reliable travel. New connections will be provided:

- From the eastbound 91 Express Lanes to the northbound 15 Express Lanes and
- From the southbound 15 Express Lanes to the westbound 91 Express Lanes

The project also is extending both the eastbound 91 outside general-purpose lane and the eastern end of the 91 Express Lanes approximately one-half mile east to Promenade Avenue to help with vehicle merging in this area. Construction began in April 2021 and the connector is expected to open in 2023.



[Visit our website](#)

### STAY CONNECTED



@1591Connector



[rctc.org/15-91connector](http://rctc.org/15-91connector)



(844) 415-9777



(844) 771-0995