

# CONSTRUCTION UPDATE

A Project of the Riverside County Transportation Commission



**JULY 8, 2022**

## LANE AND RAMP CLOSURES

Construction activity will require nightly lane and ramp closures **July 11-15** for bridge and roadway work as we continue building the 15/91 Express Lanes Connector. Please see details below.

### **Westbound 91 Lane Closures, McKinley St. to Main St.**

- Monday, July 11 through Thursday, July 14, nightly, 8 p.m. to 4 a.m.
- Friday, July 15, 8 p.m. to 6 a.m.

### **Eastbound 91 Lane Closures, Main St. to McKinley St.**

- Wednesday, July 13, 9 p.m. to 6 a.m.
- Thursday July 14 and Friday, July 15, nightly, 10 p.m. to 6 a.m.

### **Southbound 15 Lane Closures, Hidden Valley Pkwy. to the 91**

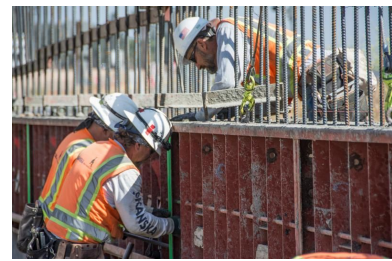
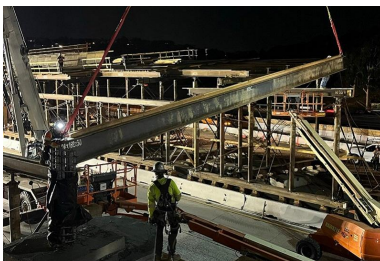
- Monday, July 11 through Thursday, July 14, nightly, 9 p.m. to 5 a.m.
- Friday, July 15, 9 p.m. to 6 a.m.

### **Eastbound 91 Main St. On-Ramp Closure**

- Friday, July 15, 10 p.m. to 8 a.m.

### **Eastbound 91 Express Lane Closures**

- Wednesday, July 13, 10 p.m. to 4 a.m.
- Thursday, July 14, 10 p.m. to 6 a.m.
- Friday, July 15, 11 p.m. to 7 a.m.



*Please note that construction activity is subject to change.*

Nightly lane closures are needed July 11-15 for ongoing work to add the new lane to southbound I-15. Please see details below.

**Southbound 15 Lane Closures, El Cerrito Road to Weirick Road**

- Monday, July 11 through Thursday, July 14, nightly, 9 p.m. to 6 a.m.
- Friday, July 15, 9 p.m. to 7 a.m.

**Southbound 15 Cajalco Road On-Ramp Closures**

- Monday, July 11 through Thursday, July 14, nightly, 9 p.m. to 6 a.m.
- Friday, July 15, 10 p.m. to 7 a.m.

**Southbound 15 Weirick Road Off-Ramp Closures**

- Monday, July 11 through Thursday, July 14, nightly, 9 p.m. to 6 a.m.
- Friday, July 15, 10 p.m. to 7 a.m.

The 15 Interim Corridor Operations Project will add a non-tolled travel lane to southbound I-15 between the Cajalco Road on-ramp and the Weirick Road off-ramp. Completion is anticipated in late summer/early fall.

Watch for updates or visit [rctc.org/15icop](http://rctc.org/15icop) for more information. Please sign up for text messages by texting **15iCOP** to (844) 771-0995.



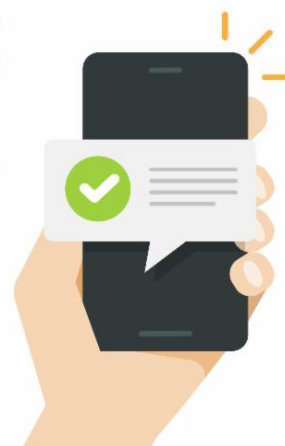
## **McKinley Street Grade Separation Project**

Work is under way on this City of Corona project. For information and construction details, please visit the project [webpage](#) and register for text updates by texting MCKINLEY at 844-518-1409.

## **STRAIGHT TO YOUR MOBILE DEVICE**

# **Text CONNECTOR to (844) 771-0995**

## **to sign up for text message updates**



## **PROJECT OVERVIEW**

The Riverside County Transportation Commission, in partnership with Caltrans, is building the 15/91 Express Lanes Connector to link the 15 Express Lanes and the 91 Express Lanes for seamless, reliable travel. New connections will be provided:





- From the eastbound 91 Express Lanes to the northbound 15 Express Lanes and
- From the southbound 15 Express Lanes to the westbound 91 Express Lanes

The project also is extending both the eastbound 91 outside general-purpose lane and the eastern end of the 91 Express Lanes approximately one-half mile east to Promenade Avenue to help with vehicle merging in this area. Construction began in April 2021 and the connector is expected to open in 2023.



Visit our website

**STAY CONNECTED**

 <p>@1591Connector</p>	 <p>rctc.org/15-91connector</p>	 <p>(844) 415-9777</p>	 <p>(844) 771-0995</p>
---	--	--	---