



CONSTRUCTION UPDATE

A Project of the Riverside County Transportation Commission



JULY 22, 2022

LANE AND RAMP CLOSURES

Construction activity will require nightly lane and ramp closures **July 25-29** for bridge and roadway work as we continue building the 15/91 Express Lanes Connector. Please see details below.

Westbound 91 Lane Reductions, McKinley St. to Main St.

- Friday, July 29, 10 p.m. to 6 a.m.

Eastbound 91 Lane Reductions, Main St. to McKinley St.

- Tuesday, July 26 and Wednesday, July 27, nightly, 9 p.m. to 6 a.m.
- Thursday, July 28 and Friday, July 29, nightly, 10 p.m. to 6 a.m.

Eastbound 91 Main St. On-Ramp Closures

- Tuesday, July 26 and Wednesday, July 27, nightly, 9 p.m. to 6 a.m.

Eastbound 91 Express Lanes Closures, Orange County Line to McKinley St.

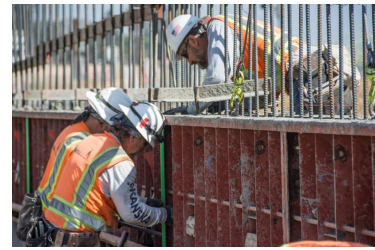
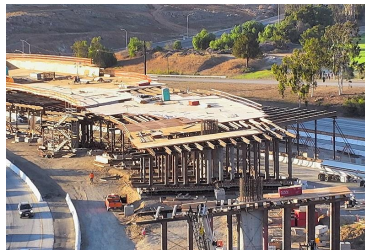
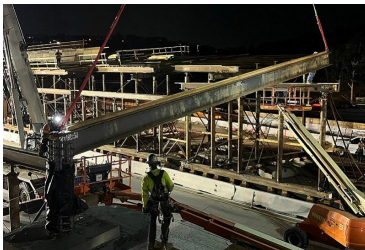
- Thursday, July 28, 10 p.m. to 6 a.m.
- Friday, July 29, 10 p.m. to 7 a.m.

Northbound 15 to Eastbound 91 Connector Closures

- Monday, July 25, 8 p.m. to 4 a.m.
- Thursday, July 28, 8 p.m. to 4 a.m.

Southbound 15 Lane Closures, Hidden Valley Pkwy. to the 91

- Monday, July 25 through Friday, July 29, nightly, 9 p.m. to 5 a.m.



Please note that construction activity is subject to change.

15 INTERIM CORRIDOR OPERATIONS PROJECT



New lane to open Saturday morning, July 23!

The new southbound I-15 lane between Cajalco Road in Corona and Weirick Road in Temescal Valley is set to open tomorrow morning, exactly two months after the start of construction.

Crews will restripe the roadway tonight, July 22. The lane will open with temporary exit signs. Crews will install permanent signs Sunday and Monday night, which will require lane closures.



See below for information about this work and closures related to project closeout activities.

Southbound 15 Lane Closures, El Cerrito Road to Weirick Road

- Friday, July 22, 9 p.m. to 7 a.m.
- Sunday, July 24, 8 p.m. to 6 a.m.
- Monday, July 25 through Thursday, July 28, nightly, 9 p.m. to 6 a.m.
- Friday, July 29, 9 p.m. to 7 a.m.

Southbound 15 Cajalco Road On-Ramp Closures

- Friday, July 22, 10 p.m. to 7 a.m.
- Sunday, July 24, 10 p.m. to 6 a.m.
- Monday, July 25 through Thursday, July 28, nightly, 9 p.m. to 6 a.m.
- Friday, July 29, 10 p.m. to 7 a.m.

Southbound 15 Weirick Road Off-Ramp Closures

- Friday, July 22, 10 p.m. to 7 a.m.
- Sunday, July 24, 10 p.m. to 6 a.m.
- Monday, July 25 through Thursday, July 28, nightly, 9 p.m. to 6 a.m.
- Friday, July 29, 10 p.m. to 7 a.m.

The 15 Interim Corridor Operations Project adds a non-tolled travel lane to southbound I-15 between the Cajalco Road on-ramp and the Weirick Road off-ramp. The new lane is expected to open early Saturday morning, July 23!

Watch for updates or visit rctc.org/15icop for more information. Please sign up for text messages by texting **15iCOP** to (844) 771-0995.

NEIGHBORING PROJECTS

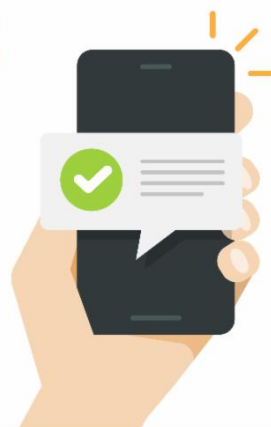
McKinley Street Grade Separation Project

Work is under way on this City of Corona project. For information and construction details, please visit the project [webpage](#) and register for text updates by texting MCKINLEY at 844-518-1409.

STRAIGHT TO YOUR MOBILE DEVICE

Text **CONNECTOR** to
(844) 771-0995

to sign up for text
message updates



PROJECT OVERVIEW

The Riverside County Transportation Commission, in partnership with Caltrans, is building the 15/91 Express Lanes Connector to link the 15 Express Lanes and the 91 Express Lanes for seamless, reliable travel. New connections will be provided:

- From the eastbound 91 Express Lanes to the northbound 15 Express Lanes and
- From the southbound 15 Express Lanes to the westbound 91 Express Lanes

The project also is extending both the eastbound 91 outside general-purpose lane and the eastern end of the 91 Express Lanes approximately one-half mile east to Promenade Avenue to help with vehicle merging in this area. Construction began in April 2021 and the connector is expected to open in 2023.



[Visit our website](#)

STAY CONNECTED



@1591Connector



rctc.org/15-91connector



(844) 415-9777



(844) 771-0995