



15/91
EXPRESS LANES
CONNECTOR



CONSTRUCTION UPDATE

A Project of the Riverside County Transportation Commission

JULY 1, 2022

LANE AND RAMP CLOSURES

Construction activity will require nightly lane and ramp closures **July 5-8** for bridge and roadway work as we continue building the 15/91 Express Lanes Connector. Please see details below.

Westbound 91 Lane Closures, McKinley St. to Main St.

- Tuesday, July 5 through Thursday, July 7, nightly, 8 p.m. to 4 a.m.
- Friday, July 8, 8 p.m. to 6 a.m.

Eastbound 91 Lane Closures, Main St. to McKinley St.

- Wednesday, July 6 through Friday, July 8, nightly, 10 p.m. to 6 a.m.

Southbound 15 Lane Closures, Hidden Valley Pkwy. to the 91

- Tuesday, July 5 through Thursday, July 7, nightly, 9 p.m. to 5 a.m.
- Friday, July 8, 9 p.m. to 6 a.m.

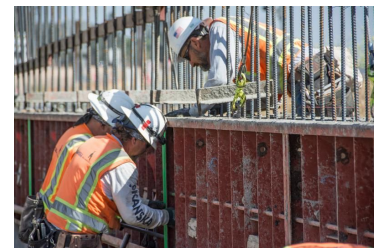
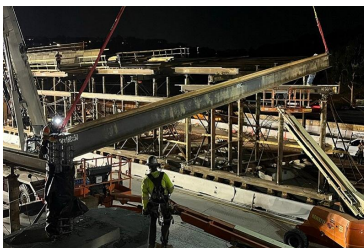
Eastbound 91 Express Lane Closures

- Wednesday, July 6, 10 p.m. to 4 a.m.
- Thursday, July 7, 10 p.m. to 6 a.m.

There will be no closures Monday, July 4, due to Independence Day.



★ INDEPENDENCE DAY ★



Please note that construction activity is subject to change.

15 INTERIM CORRIDOR OPERATIONS PROJECT



Interstate 15
**INTERIM CORRIDOR
OPERATIONS PROJECT**

Nightly lane closures are needed July 5-8 for ongoing work to add the new lane to southbound I-15. Please see details below.

Southbound 15 Lane Closures, El Cerrito Road to Weirick Road

- Tuesday, July 5 through Thursday, July 7, nightly, 9 p.m. to 6 a.m.
- Friday, July 8, 9 p.m. to 7 a.m.

Southbound 15 Cajalco Road On-Ramp Closures

- Tuesday, July 5 through Thursday, July 7, nightly, 9 p.m. to 6 a.m.
- Friday, July 8, 9 p.m. to 7 a.m.

Southbound 15 Weirick Road Off-Ramp Closures

- Tuesday, July 5 through Thursday, July 7, nightly, 9 p.m. to 6 a.m.
- Friday, July 8, 9 p.m. to 7 a.m.

The 15 Interim Corridor Operations Project will add a non-tolled travel lane to southbound I-15 between the Cajalco Road on-ramp and the Weirick Road off-ramp. Completion is anticipated in late summer/early fall.

Watch for updates or visit rctc.org/15icop for more information. Please sign up for text messages by texting **15iCOP** to (844) 771-0995.



NEIGHBORING PROJECTS

McKinley Street Grade Separation Project

Work is under way on this City of Corona project. For information and construction details, please visit the project [webpage](#) and register for text updates by texting MCKINLEY at 844-518-1409.

STRAIGHT TO YOUR MOBILE DEVICE

Text **CONNECTOR** to **(844) 771-0995**

to sign up for text message updates



PROJECT OVERVIEW

The Riverside County Transportation Commission, in partnership with Caltrans, is building the 15/91 Express Lanes Connector to link the 15 Express Lanes and the 91 Express Lanes for seamless, reliable travel. New connections will be provided:

- From the eastbound 91 Express Lanes to the northbound 15 Express Lanes and
- From the southbound 15 Express Lanes to the westbound 91 Express Lanes

The project also is extending both the eastbound 91 outside general-purpose lane and the eastern end of the 91 Express Lanes approximately one-half mile east to Promenade Avenue to help with vehicle merging in this area. Construction began in April 2021 and the connector is expected to open in 2023.



[Visit our website](#)

STAY CONNECTED

  			
@1591Connector	rctc.org/15-91connector	(844) 415-9777	(844) 771-0995