



15/91
EXPRESS LANES
CONNECTOR

CONSTRUCTION UPDATE

A Project of the Riverside County Transportation Commission



JUNE 6, 2022

UPCOMING WEEKEND FULL CLOSURE

WEEKEND FULL CLOSURE:
All Lanes, Southbound 15 at
15/91 Interchange

Friday, June 10, 9 p.m. to
Monday, June 13, 5 a.m.



SOUTHBOUND 15 AT 15/91 INTERCHANGE

Friday, June 10 – Monday, June 13

A full closure of southbound I-15 at the 15/91 interchange in Corona is scheduled the weekend of June 10–13, 2022. The closure will allow crews to safely place support structures over southbound I-15 for the new 15/91 Express Lanes Connector.

[Press play to learn more.](#)

LANE AND RAMP CLOSURES

Construction activity will require nightly lane and ramp closures **June 6-10** for bridge and roadway work as we continue building the 15/91 Express Lanes Connector. Please see details below.

Westbound 91 Lane Closures, McKinley St. to Main St.

- Monday, June 6 through Thursday, June 9, nightly, 8 p.m. to 4 a.m.

Eastbound 91 Lane Closures, Main St. to McKinley St.

- Monday, June 6 through Wednesday, June 8, nightly, 9 p.m. to 6 a.m.
- Thursday, June 9, 10 p.m. to 6 a.m.

Eastbound 91 Main St. On-Ramp Closures

- Monday, June 6 through Thursday, June 8, nightly, 9 p.m. to 6 a.m.

Southbound 15 Lane Closures, Hidden Valley Pkwy. to the 91

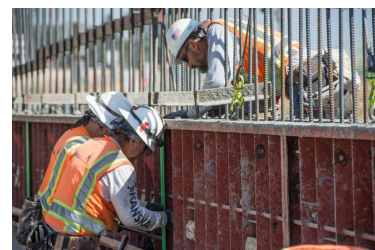
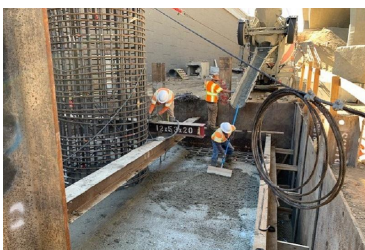
- Monday, June 6 through Thursday, June 8, nightly, 9 p.m. to 5 a.m.

Eastbound 91 Express Lanes Connector Closure

- Monday, June 6, 10 p.m. to 6 a.m.
- Tuesday, June 7 and Wednesday, June 8, nightly, 10 p.m. to 4 a.m.

Westbound 91 to Northbound 15 Connector Closure

- Tuesday, June 7, 8 p.m. to 4 a.m.



Please note that construction activity is subject to change.

15 INTERIM CORRIDOR OPERATIONS PROJECT



Interstate 15
INTERIM CORRIDOR
OPERATIONS PROJECT

Nightly lane closures are needed June 7-10 for construction activities for the I-15 Interim Corridor Operations Project. Please see details below.

Southbound 15 Lane Closures, El Cerrito Road to Weirick Road

- Tuesday, June 7 through Friday, June 10, nightly, 9 p.m. to 6 a.m.

Southbound 15, Cajalco Road On-Ramp Closures

- Thursday, June 9 and Friday, June 10, nightly, 9 p.m. to 6 a.m.

The 15 Interim Corridor Operations Project will add a non-tolled travel lane to southbound I-15 between the Cajalco Road on-ramp and the Weirick Road off-ramp. Completion is anticipated in late summer/early fall.

Watch for updates or visit rctc.org/15icop for more information. Please sign up for text messages by texting **15iCOP** to (844) 771-0995.



NEIGHBORING PROJECTS

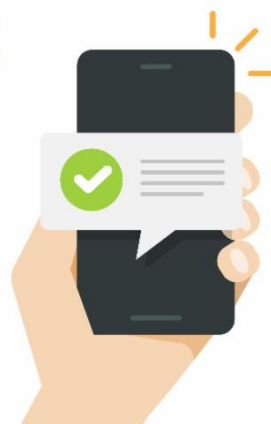
McKinley Street Grade Separation Project

Work is under way on this City of Corona project. For information and construction details, please visit the project [webpage](#) and register for text updates by texting MCKINLEY at 844-518-1409.

STRAIGHT TO YOUR MOBILE DEVICE

**Text CONNECTOR to
(844) 771-0995**

**to sign up for text
message updates**



PROJECT OVERVIEW

The Riverside County Transportation Commission, in partnership with Caltrans, is building the 15/91 Express Lanes Connector to link the 15 Express Lanes and the 91 Express Lanes for seamless, reliable travel. New connections will be provided:

- From the eastbound 91 Express Lanes to the northbound 15 Express Lanes and
- From the southbound 15 Express Lanes to the westbound 91 Express Lanes

The project also is extending both the eastbound 91 outside general-purpose lane and the eastern end of the 91 Express Lanes approximately one-half mile east to Promenade Avenue to help with vehicle merging in this area. Construction began in April 2021 and the connector is expected to open in 2023.



[Visit our website](#)

STAY CONNECTED



@1591Connector



rctc.org/15-91connector



(844) 415-9777



(844) 771-0995