



CONSTRUCTION UPDATE

A Project of the Riverside County Transportation Commission



JUNE 20, 2022



Our team made great progress during the recent weekend full closure, with more than 150 crew members placing 52 beams to form the support structure for the 15/91 Express Lanes Connector.

LANE AND RAMP CLOSURES

Construction activity will require nightly lane and ramp closures **June 20-24** for bridge and roadway work as we continue building the 15/91 Express Lanes Connector. Please see details below.

Westbound 91 Lane Closures, McKinley St. to Main St.

- Monday, June 20 through Thursday, June 23, nightly, 8 p.m. to 4 a.m.
- Friday, June 24, 10 p.m. to 6 a.m.

Eastbound 91 Lane Closures, Main St. to McKinley St.

- Monday, June 20 through Wednesday, June 22, nightly, 9 p.m. to 6 a.m.
- Thursday, June 23 and Friday, June 24, nightly, 10 p.m. to 6 a.m.

Eastbound 91 Main St. On-Ramp Closures

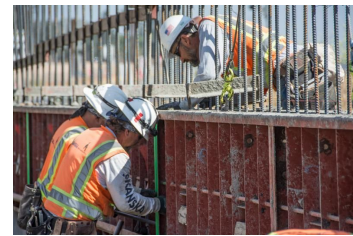
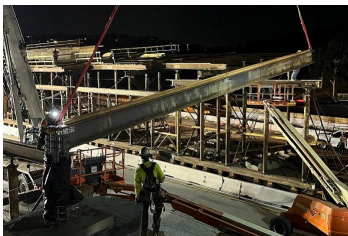
- Monday, June 20 through Thursday, June 23, nightly, 9 p.m. to 6 a.m.
- Friday, June 24, 10 p.m. to 8 a.m.

Southbound 15 Lane Closures, Hidden Valley Pkwy. to the 91

- Monday, June 20 through Thursday, June 23, nightly, 9 p.m. to 5 a.m.
- Friday, June 24, 9 p.m. to 6 a.m.

Northbound 15 to Eastbound 91 Connector Closure

- Monday, June 20 and Tuesday, June 21, nightly, 8 p.m. to 4 a.m.



Please note that construction activity is subject to change.

NEIGHBORING PROJECTS

McKinley Street Grade Separation Project

Work is under way on this City of Corona project. For information and construction details, please visit the project [webpage](#) and register for text updates by texting MCKINLEY at 844-518-1409.

STRAIGHT TO YOUR MOBILE DEVICE

Text **CONNECTOR** to **(844) 771-0995**

to sign up for text message updates



PROJECT OVERVIEW

The Riverside County Transportation Commission, in partnership with Caltrans, is building the 15/91 Express Lanes Connector to link the 15 Express Lanes and the 91 Express Lanes for seamless, reliable travel. New connections will be provided:

- From the eastbound 91 Express Lanes to the northbound 15 Express Lanes and
- From the southbound 15 Express Lanes to the westbound 91 Express Lanes

The project also is extending both the eastbound 91 outside general-purpose lane and the eastern end of the 91 Express Lanes approximately one-half mile east to Promenade Avenue to help with vehicle merging in this area. Construction began in April 2021 and the connector is expected to open in 2023.



[Visit our website](#)

STAY CONNECTED



@1591Connector



rctc.org/15-91connector



(844) 415-9777



(844) 771-0995